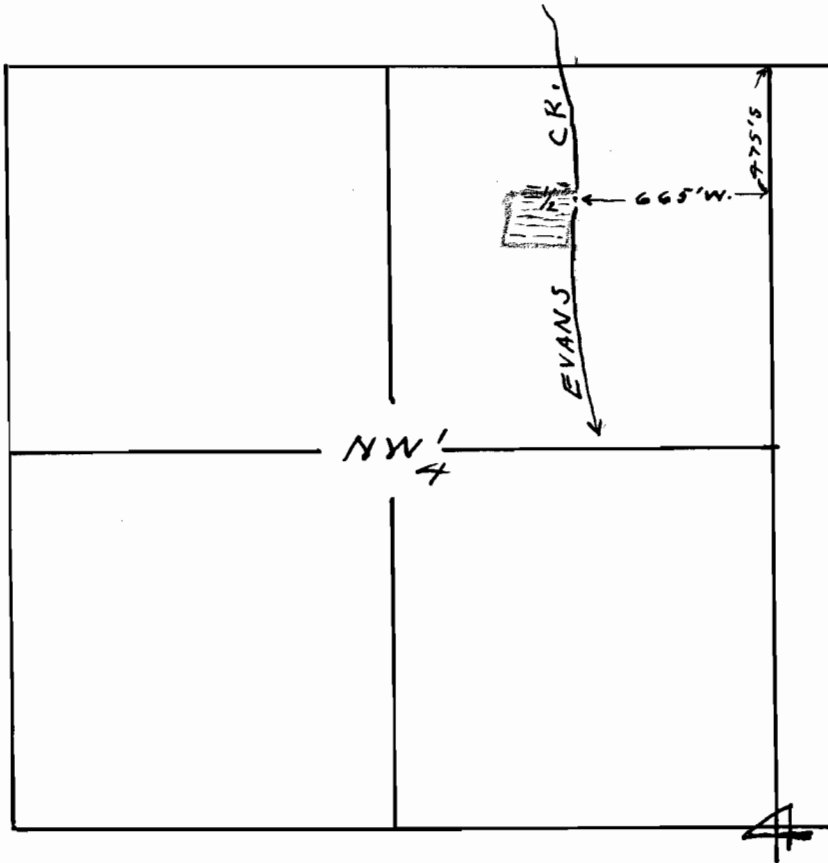


Sec. 4, T.36 S., R.4 W. W.M.



Map to accompany application of
R.B. Stocking for use of water
from Evans Creek for irrigation.

This office 10/9/50 *Chambers*

RECEIVED
OCT 11 1950
STATE ENGINEER
SEASIDE, OREGON

Application No 25357
Permit No 19881