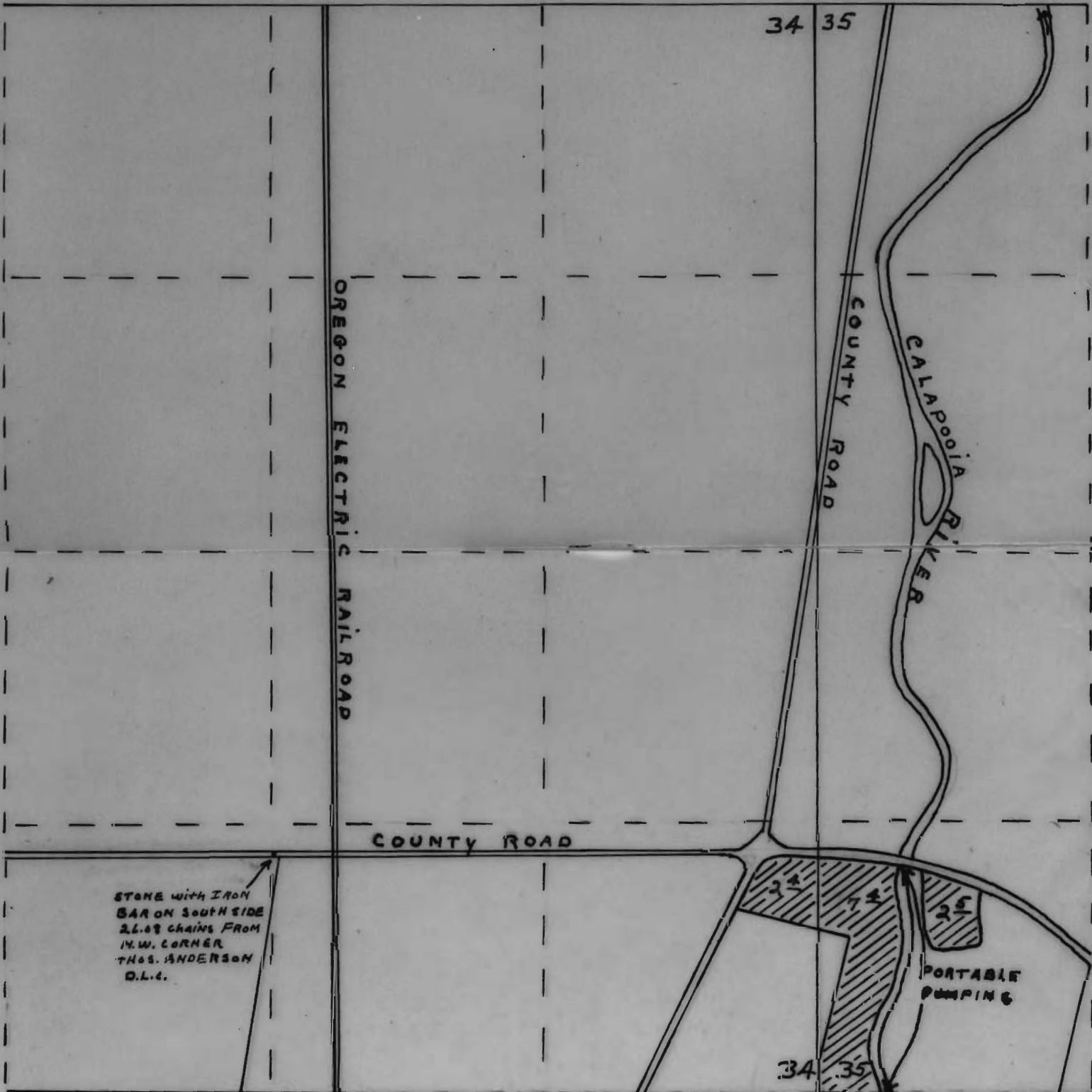


SECTIONS 34 and 35

TOWNSHIP 11 S., RANGE 4 W.W.M.



STONE WITH IRON
 BAR ON SOUTH SIDE
 21.49 CHAINS FROM
 N.W. CORNER
 THOS. ANDERSON
 D.L.C.

SCALE 1" = 660'

RECEIVED
 DEC 4, 1950
 STATE ENGINEER
 SALEM, OREGON

Application No. 25482
 Permit No. 20029