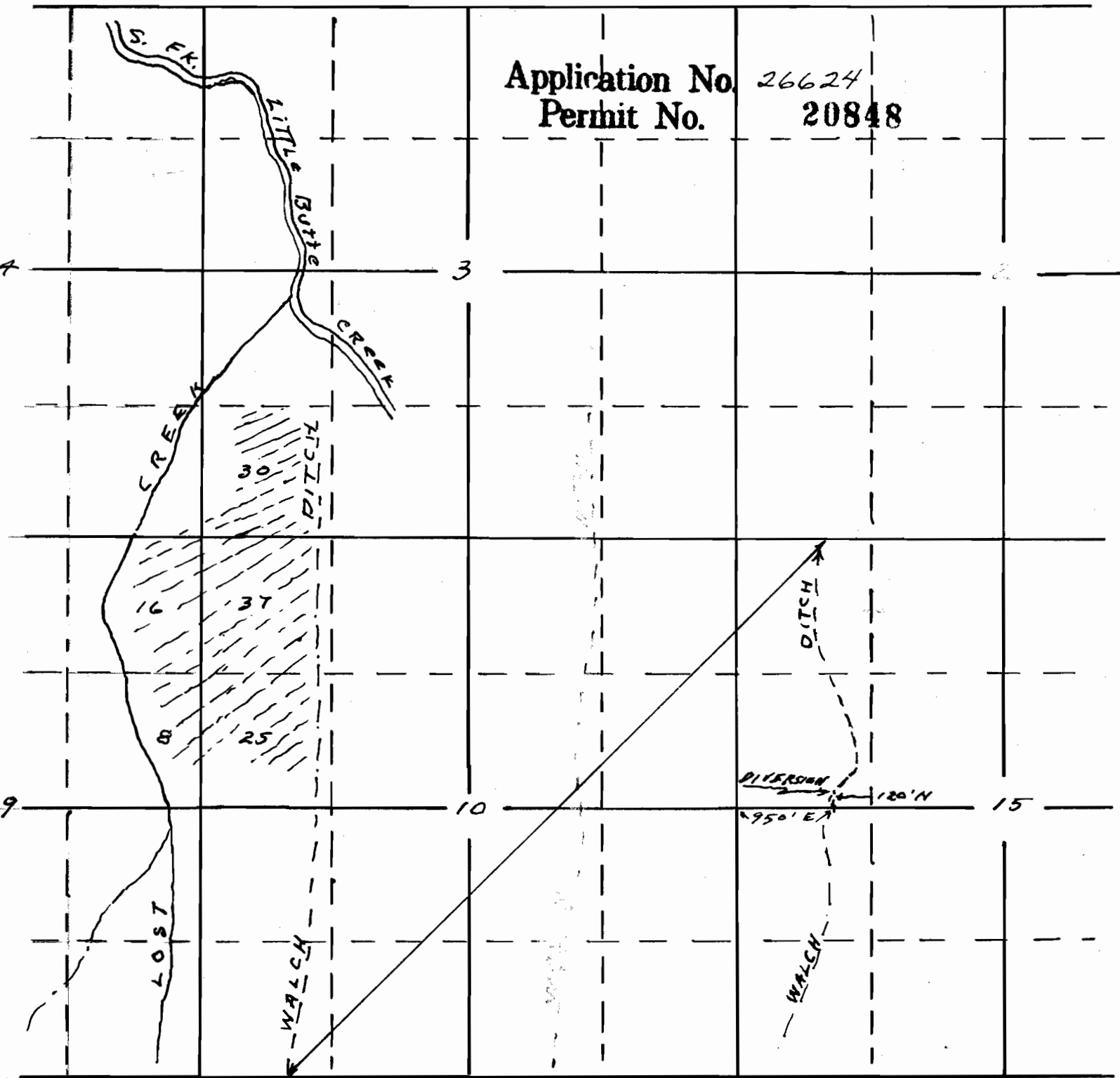


Application No. 26624
Permit No. 20848



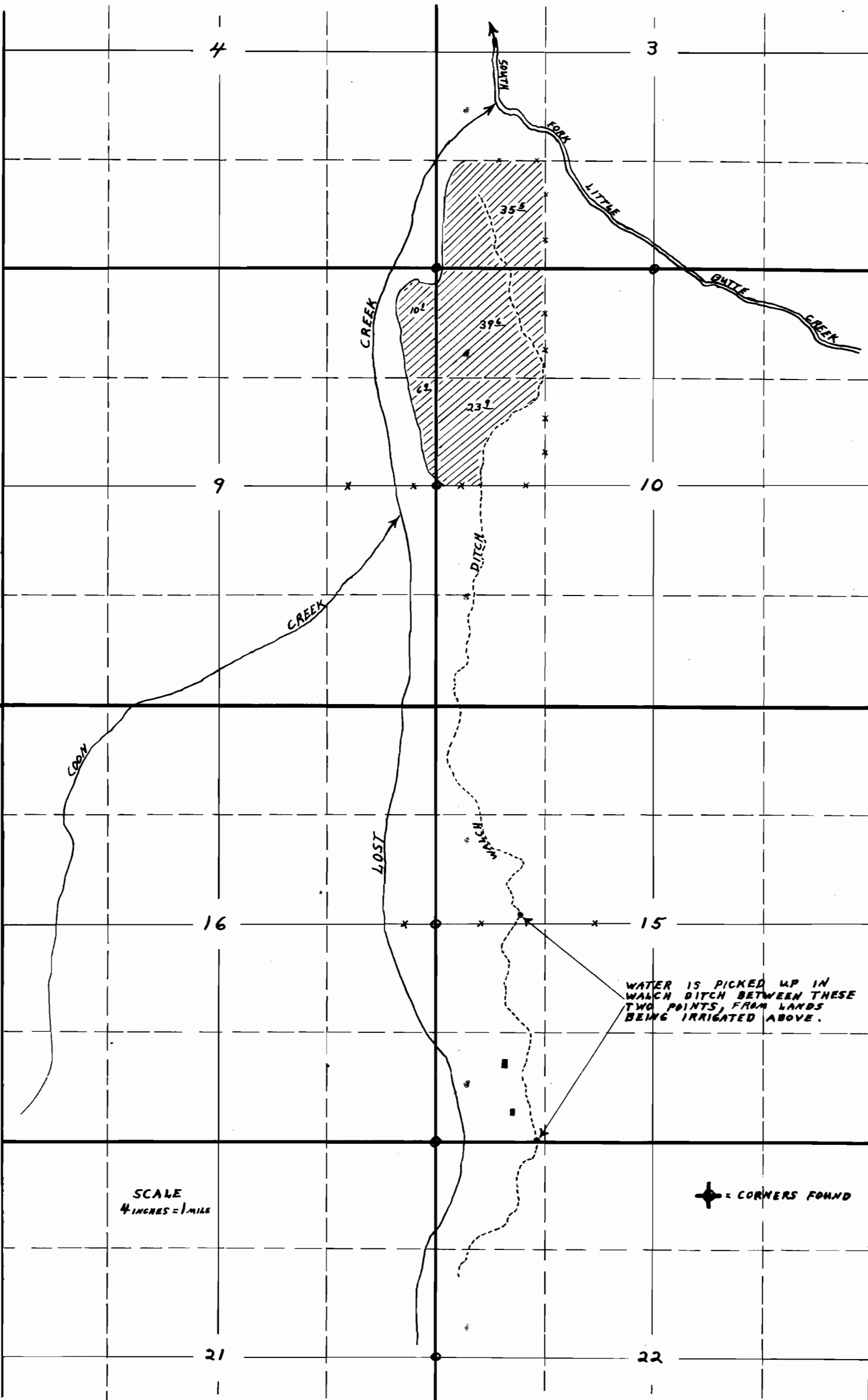
Map to accompany application of
John Walch for use of supplemental
water for irrigation of lands under P. 19724

This office 10/19/51 *Chenith*

26624

REGISTERED
STATE ENGINEER
CALIFORNIA

20848



MAP ACCOMPANYING FINAL PROOF OF JOHN WALCH, FOR USE OF WASTE, SURPLUS, AND RUN OFF WATER FOR SUPPLEMENTAL IRRIGATION PURPOSES.

PERMIT NO. 20848 APPLICATION NO. 26624

MAP COPIED FROM PLANE TABLE SURVEY. DECEMBER 1953 David L. Hendrix WATERMASTER DIST. 15