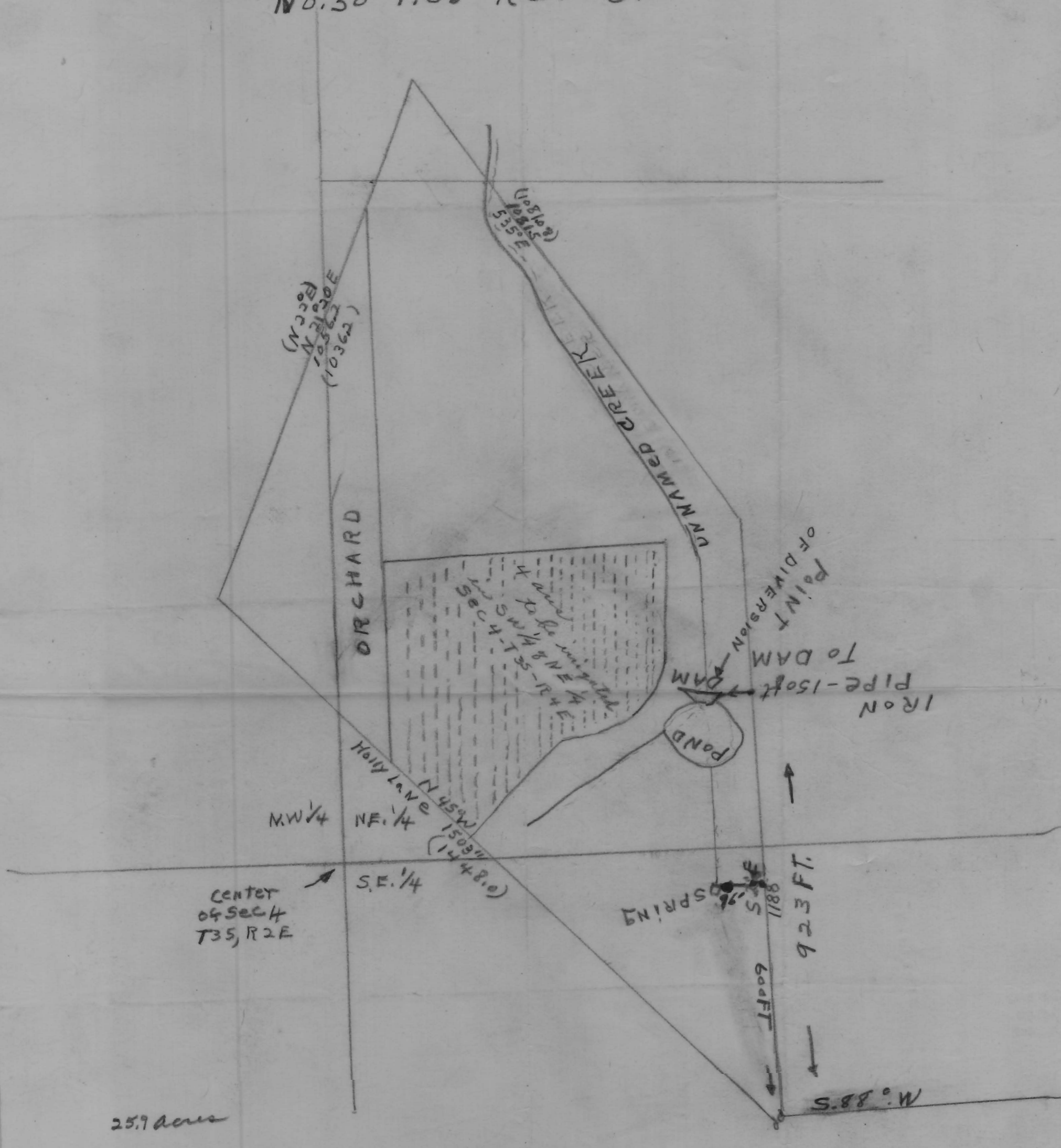


PART OF L.D.C. LATOURETTE D.C.L.
 No. 30 T. 35 R. 2 E CLACKAMAS Co; OREG.



RECEIVED
 DEC 17 1951
 STATE ENGINEER
 SALEM, OREGON

Application No. R-26688
 26689
 Permit No. 20894
 R-1286

PLAT OF SURVEY OF
 C. J. MONTAGNE