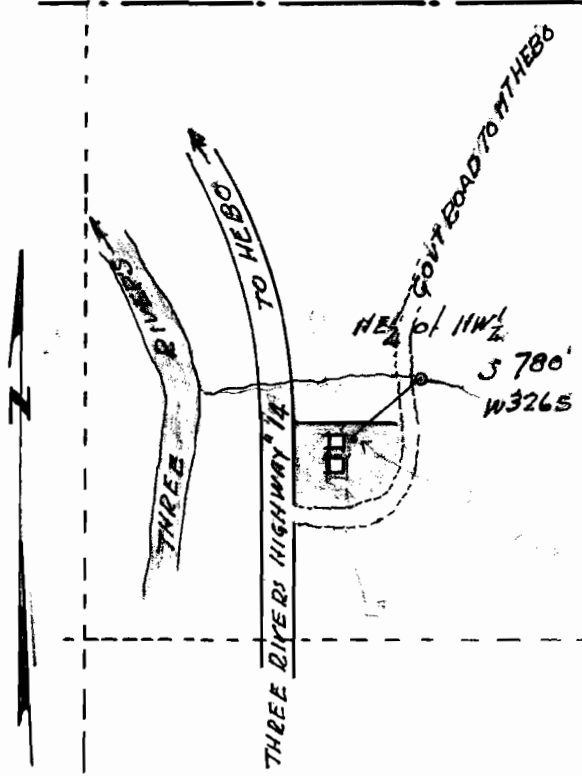


12 7
13 18



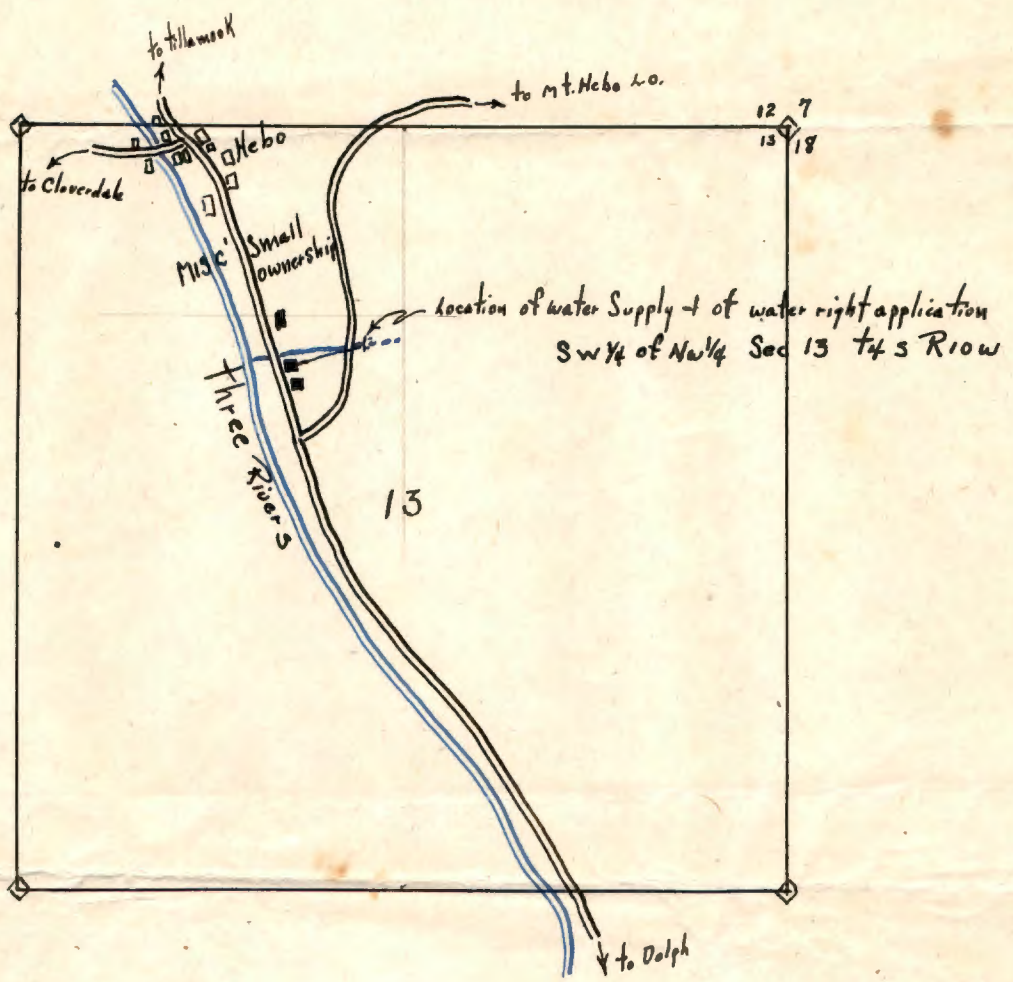
NW 1/4 NE 1/4

NE 1/4 NE 1/4

P. E. BONES & WILLIAM HAGESTRON
 WATER RIGHT.
 SEC. 13. T. 4. S. R. 10. W. W. M
 TILLAMOOK CO. O. R.
 SCALE 1" = 400'

Application No. 26714
 Permit No. 20908

13



RECEIVED
 JUN 17 1946
 STATE ENGINEER
 SALEM, OREGON

Traced from Chas. F. Metzger Platt
 1930 Edition
 Pa. 1

RECEIVED
 AUG 3 1950
 STATE ENGINEER
 SALEM, OREGON