

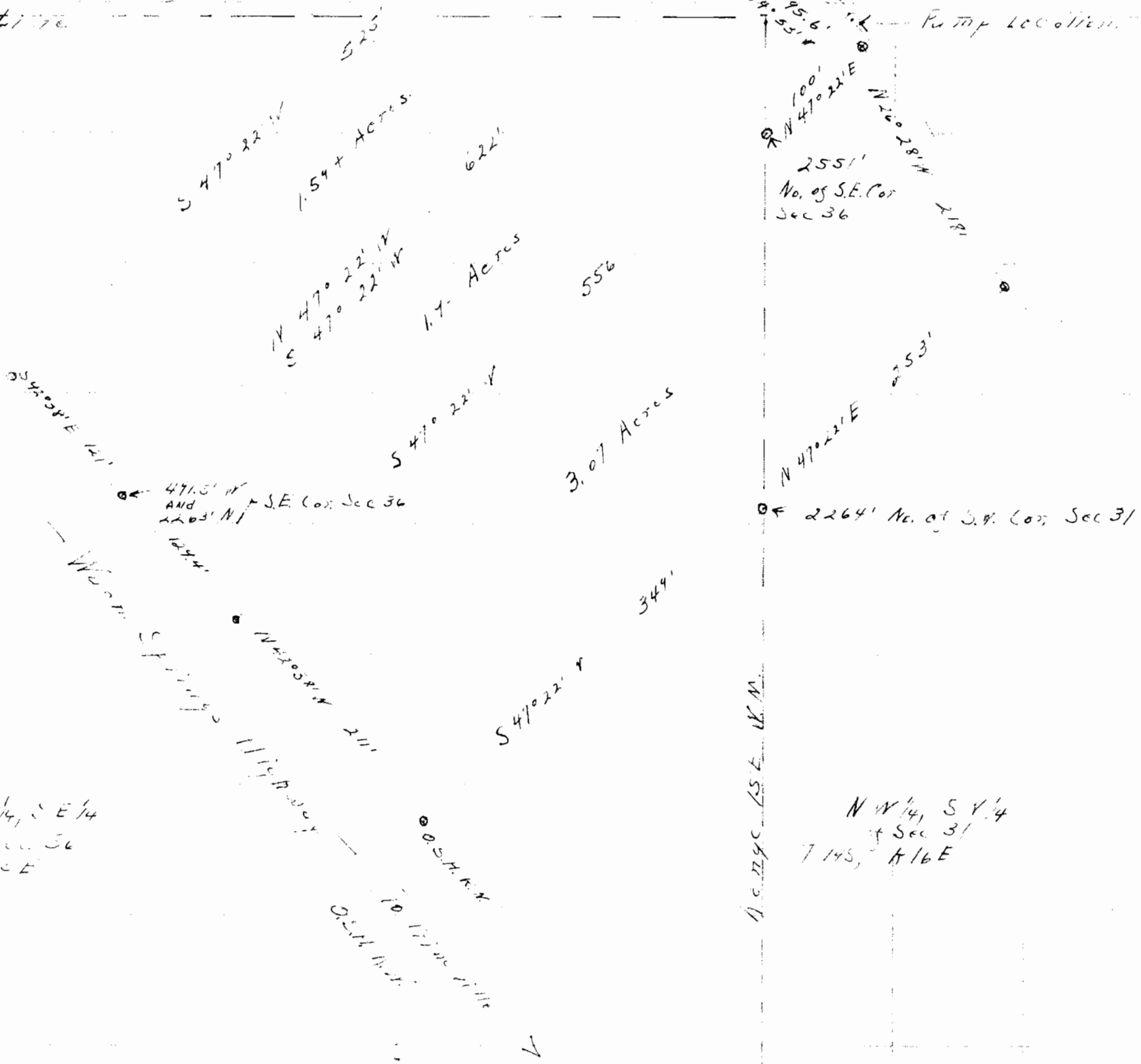
Cook County, Oregon  
 Vicinity of Prineville

SE 1/4, NE 1/4  
 of Sec 36  
 T14S, R15E

SW 1/4, NW 1/4  
 of Sec 31  
 T14S, R16E

One Half  
 Mile Line

Ramp Location



NE 1/4, SE 1/4  
 of Sec 36  
 T14S, R15E

NW 1/4, SW 1/4  
 of Sec 31  
 T14S, R16E

Acres SE 1/4

Acres SE 1/4

Crook County Oregon  
 Vicinity of Prineville

SE 1/4, NE 1/4  
 of Sec 36  
 T14S, R15E

SW 1/4, NW 1/4  
 of Sec 31  
 T14S, R16E

One Half  
 Mile Line

Range 15E W.M.

Range 15E W.M.



NE 1/4, SE 1/4  
 of Sec 36  
 T14S, R15E

NW 1/4, SW 1/4  
 of Sec 31  
 T14S, R16E

RECEIVED  
 JAN 22 1952  
 STATE ENGINEER  
 SALEM, OREGON

Application No. 26796  
 Permit No. 21050