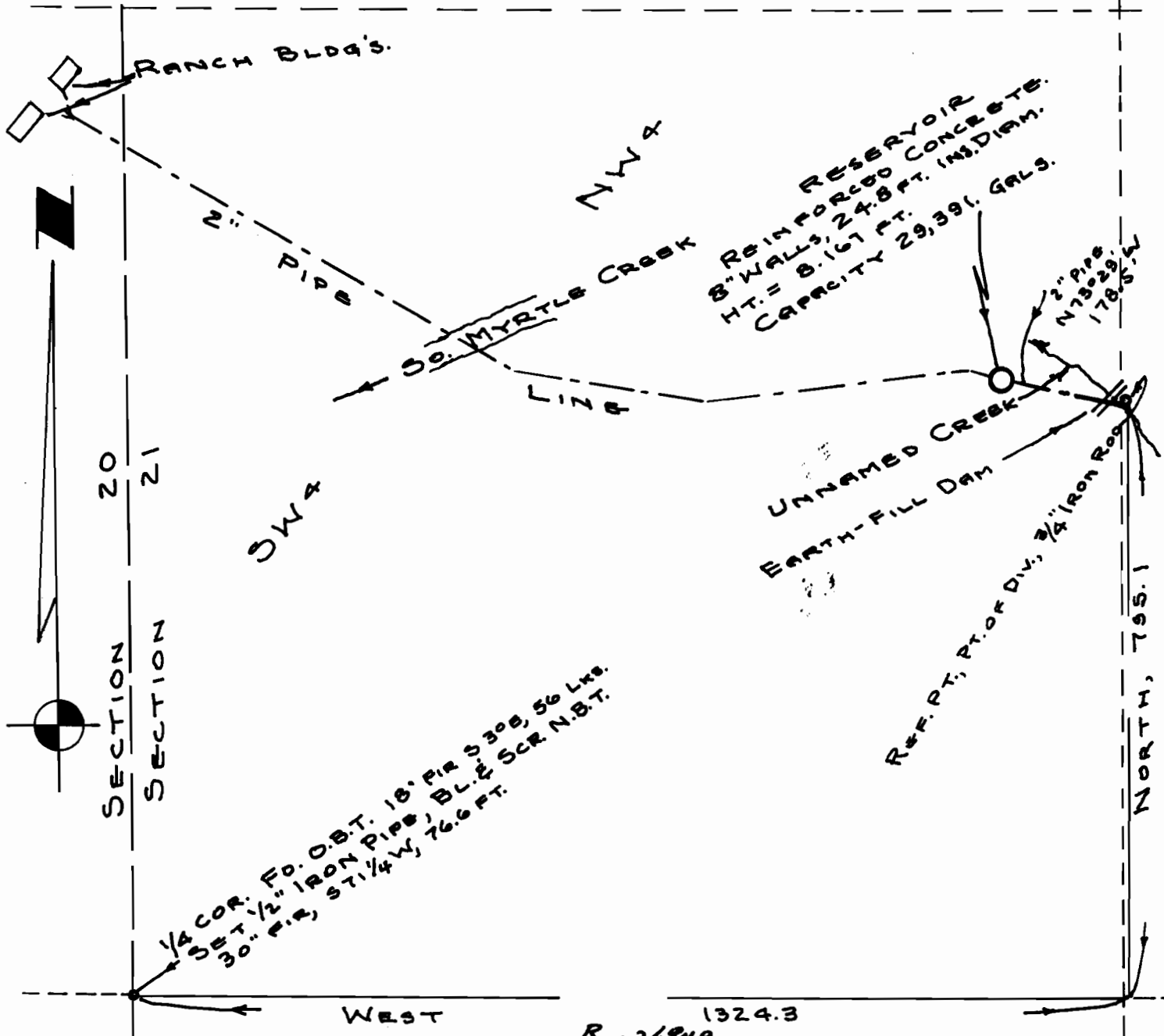




WATER RIGHT FOR R.A. BRIGGS SECTIONS 20 & 21, T29S, R3W, WM.

GRANT & EVANS, ENGINEERS
ROSBURG, OREGON



1/4 COR. FO. O.B.T. 18" PIP 3308, 56 Lvs.
 O.B.T. 1/2" IRON PIPE, BL. & SCR. N.B.T.
 30" PIP, 57 1/4 W, 76.6 FT.

Application No.
 Permit No.

R-26949
 26950
 R-1341
 21172

RECEIVED
 FEB. 1 1958
 STATE ENGINEER
 SHELBY, OREGON