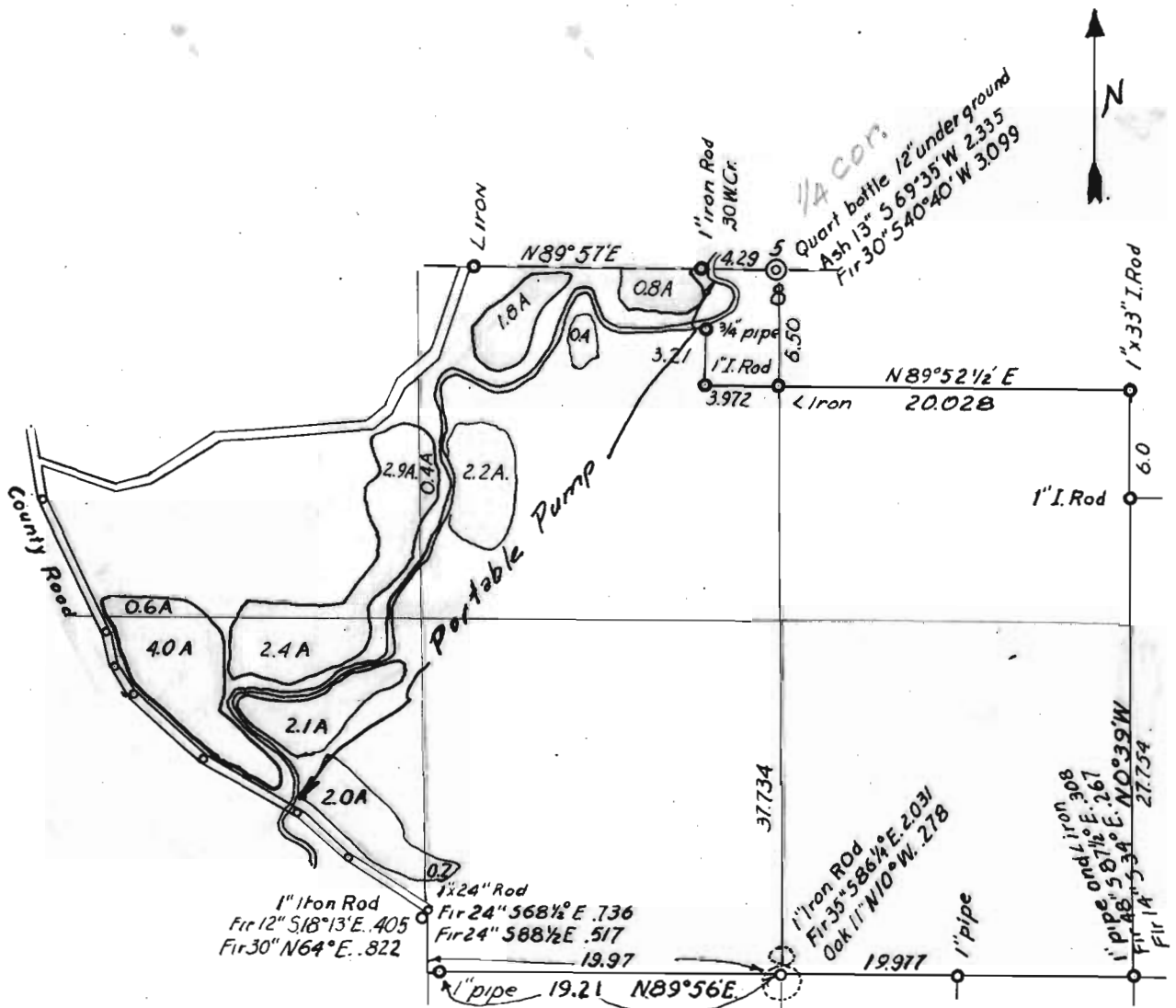


PLAT OF S. L. McCONNELL PROPERTY
in
SECTION 8, TWP. 11 S., R. 7 W., WILL. MER.
Scale: 1-inch = 10 chains March 3, 1952.

I, Curtis C. Hanson, County Surveyor of Benton County, Oregon, hereby certify that this plat was made on the above date from maps on file in my office and from County Assessor's aerial photographs and that monuments are shown on this plat as indicated on said maps.

REGISTERED
OREGON
LAND SURVEYOR
Curtis C. Hanson
NOVEMBER 9, 1945
CURTIS C. HANSON
161

RECEIVED
MAR 21 1952
STATE ENGINEER
SALEM, OREGON



Application No. 27002
Permit No. 21208

27002