

Sec. 23.

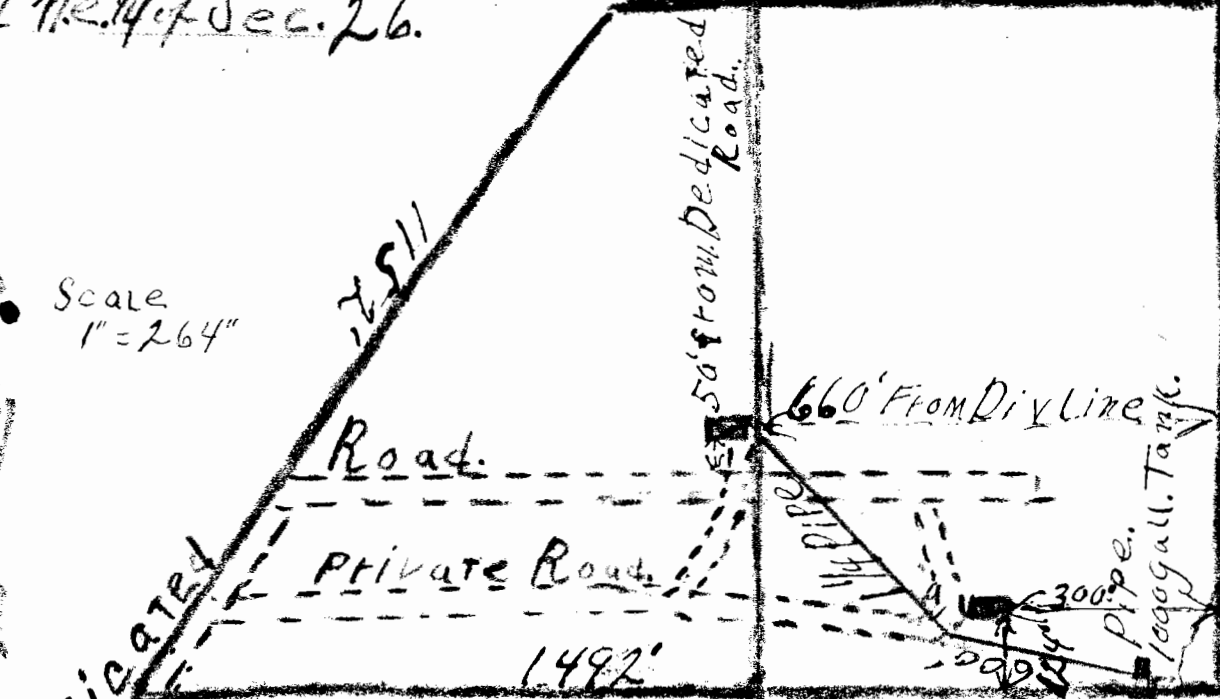
Sec. 24

ne. 1/4 of ne. 1/4 of Sec. 26.

nw. 1/4 of nw. 1/4 of Sec. 25.



Scale
1" = 264'



Spring is located
at 1145' South and 5'60' east
at the N.W. Corner of Sec. 25 T 25 R 1 E.

Division Line.
S.M. Shannon D.L.C.

APPLICATION NO. 27111
PERMIT NO. 21223