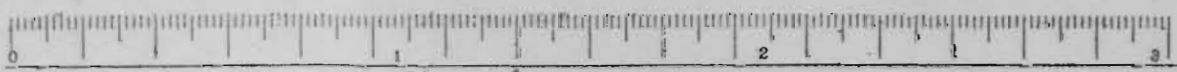
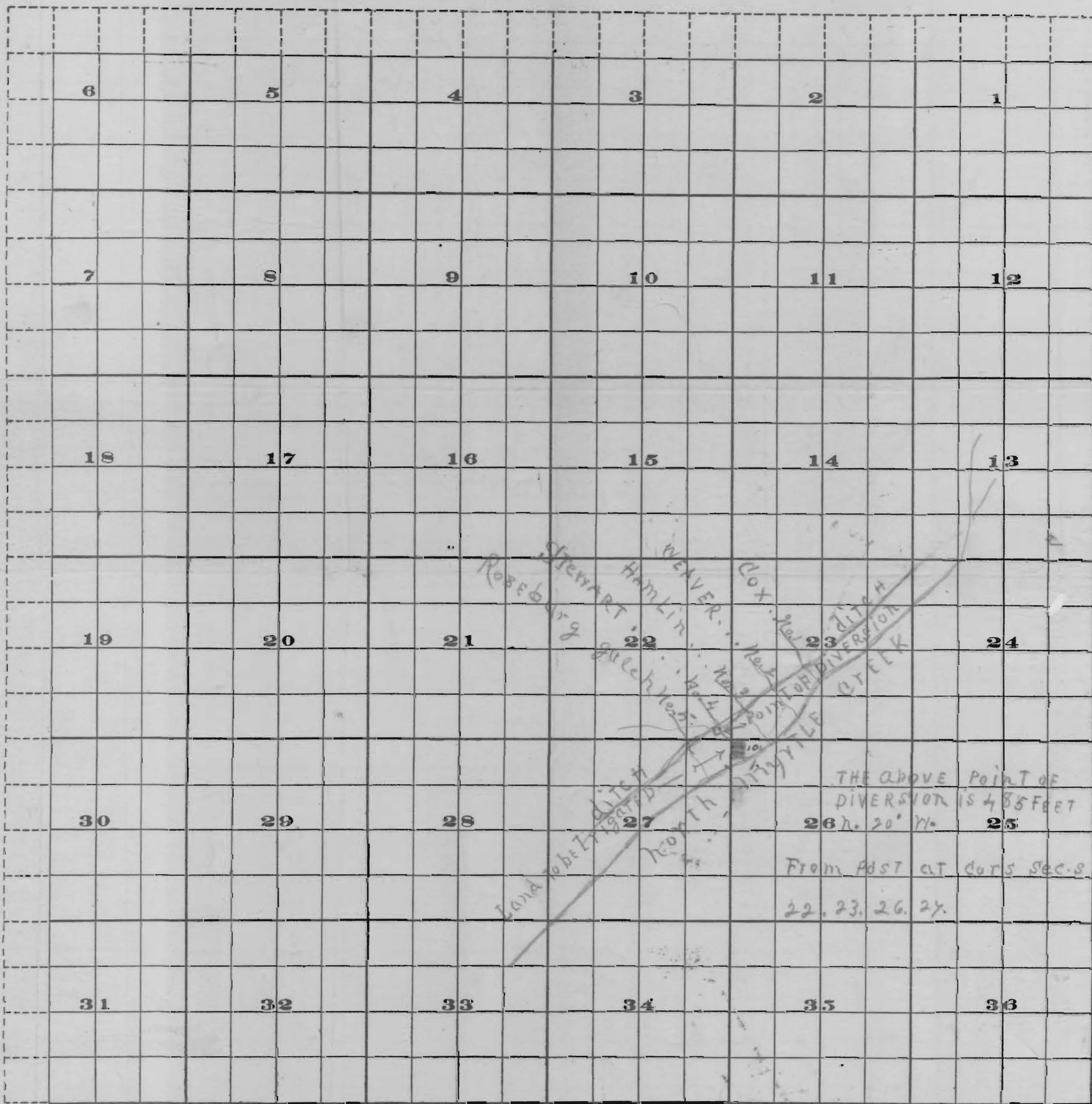


OFFICE OF STATE ENGINEER
RECEIVED
JUL 29 1914
SALEM, OREGON

3806

Township 28 Range 4 W.



Scale of Feet.

FROM OFFICE OF THE STATE ENGINEER, SALEM, OREGON

T. 28 S
R. 4 W.

OFFICE OF STATE ENGINEER
RECEIVED
JUL 29 1914
SALEM, OREGON

3806

3806

Application No. 3806
Permit No. 2126