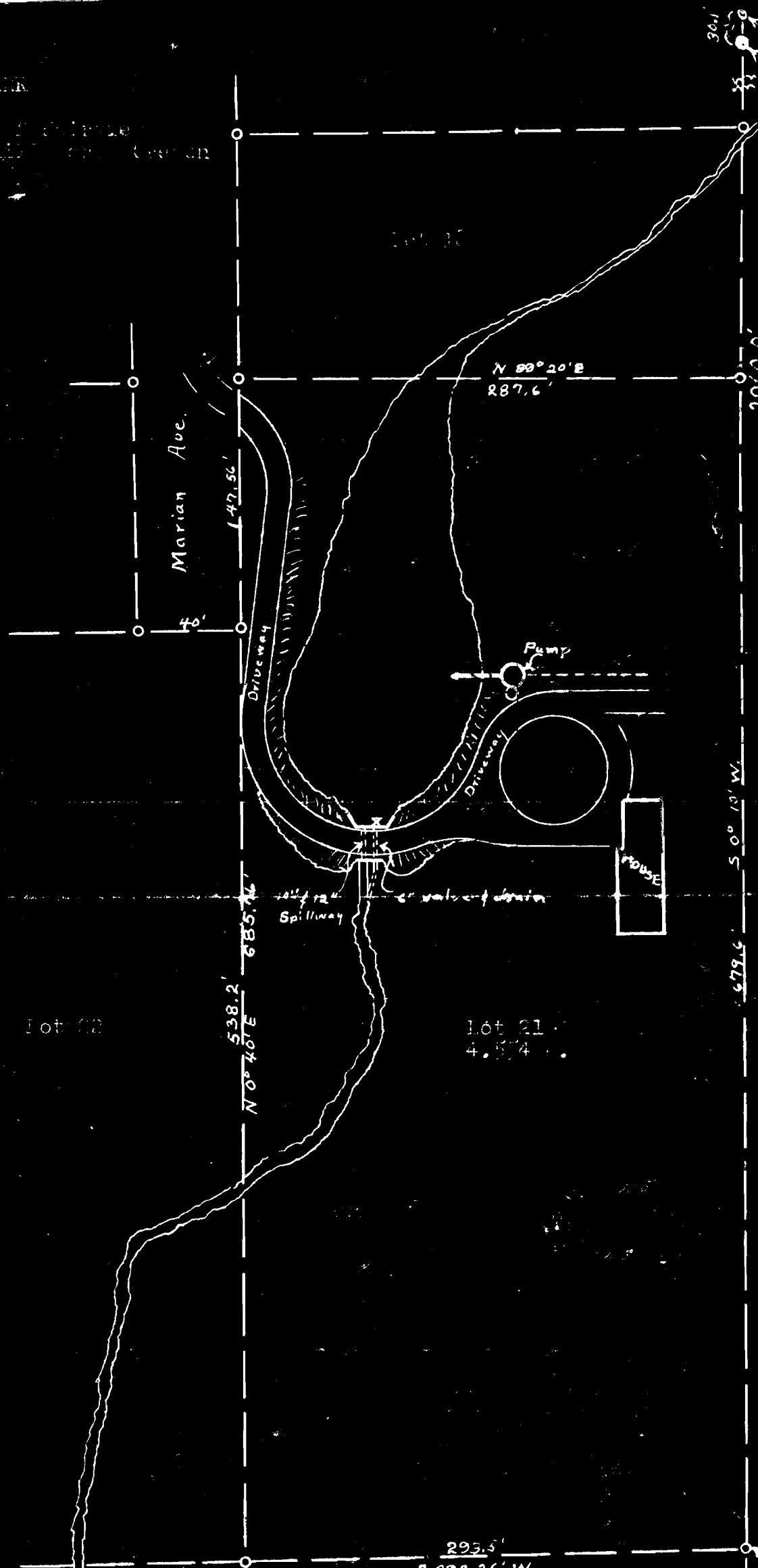


100' 0" PARK
100' 0" 11th St. 100' 0" 12th St.
100' 0" 13th St. 100' 0" 14th St.



INITIAL POINT
30' 0" 11th St. 30' 0" 12th St. 30' 0" 13th St. 30' 0" 14th St.
SE. Cor. of Tract 33 of Amended Plat of
which 30' 0" S. of the
DEC #42

Application No. R-27282
Permit No. 27303
R-1362
21390