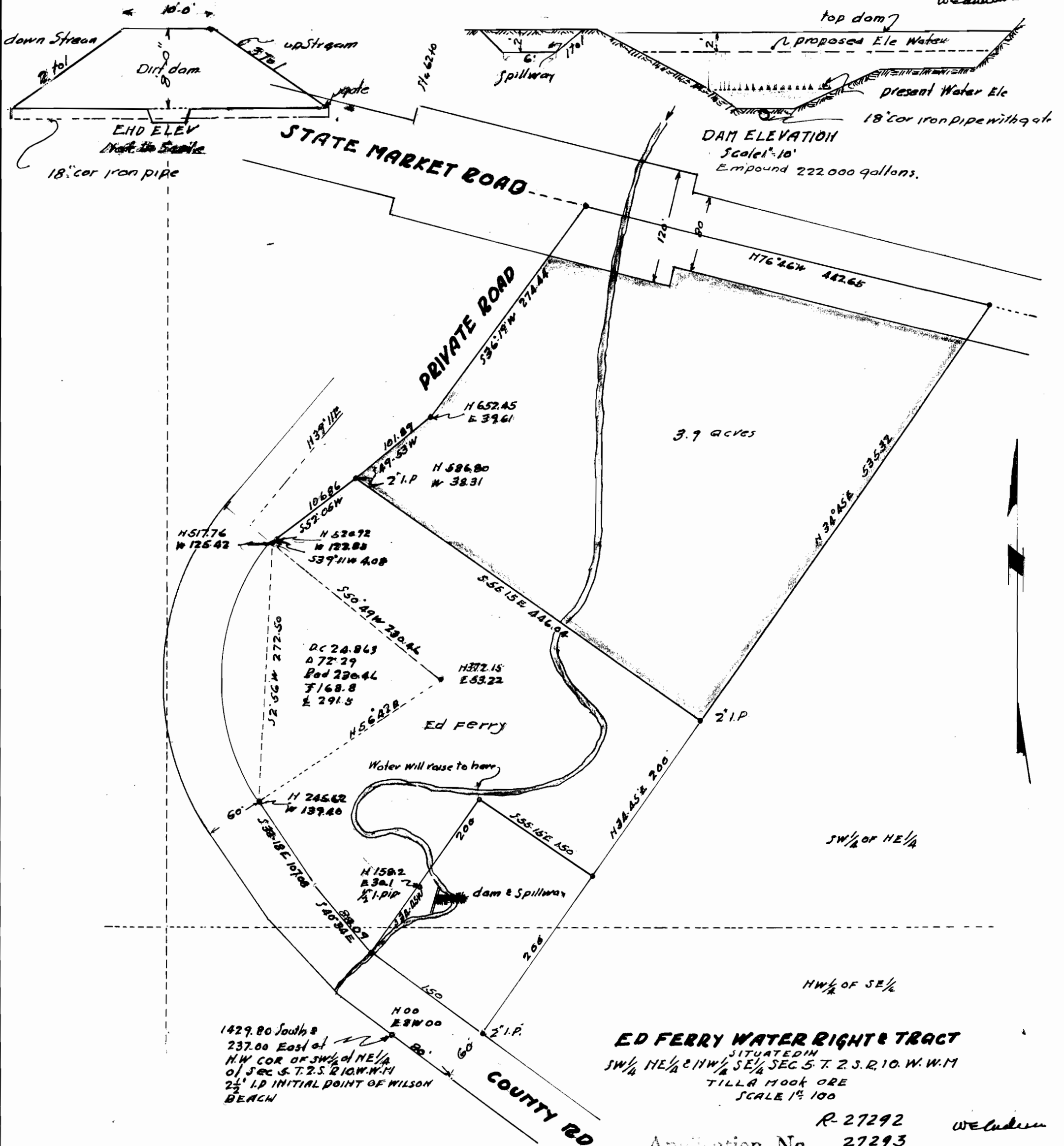


**SURVEYORS CERTIFICATE**

I, W. E. Anderson of Tillamook Ore do hereby certify that this map was made from notes taken during an actual survey made by me in May 1952, and that the monument shown is with reference to the initial point of WILSON BEACH.

COUNTY SUBV  
W. E. Anderson



1429.80 South &  
237.00 East of  
N.W. COR. OF SW 1/4 of NE 1/4  
of SEC 5, T. 2. S. R. 10. W. W. M.  
2 1/2" I.P. INITIAL POINT OF WILSON  
BEACH

**ED FERRY WATER RIGHT TRACT**  
SITUATED IN  
SW 1/4 NE 1/4 & HW 1/4 SE 1/4 SEC 5, T. 2. S. R. 10. W. W. M.  
TILLAMOOK ORE  
SCALE 1" = 100'

Application No. R-27292 WE Anderson  
27293  
Permit No. R-1369  
21467