

G.L. RIDENOUR

SECTION 21 TWP. 13 S R 7 W WILL. MERIDIAN

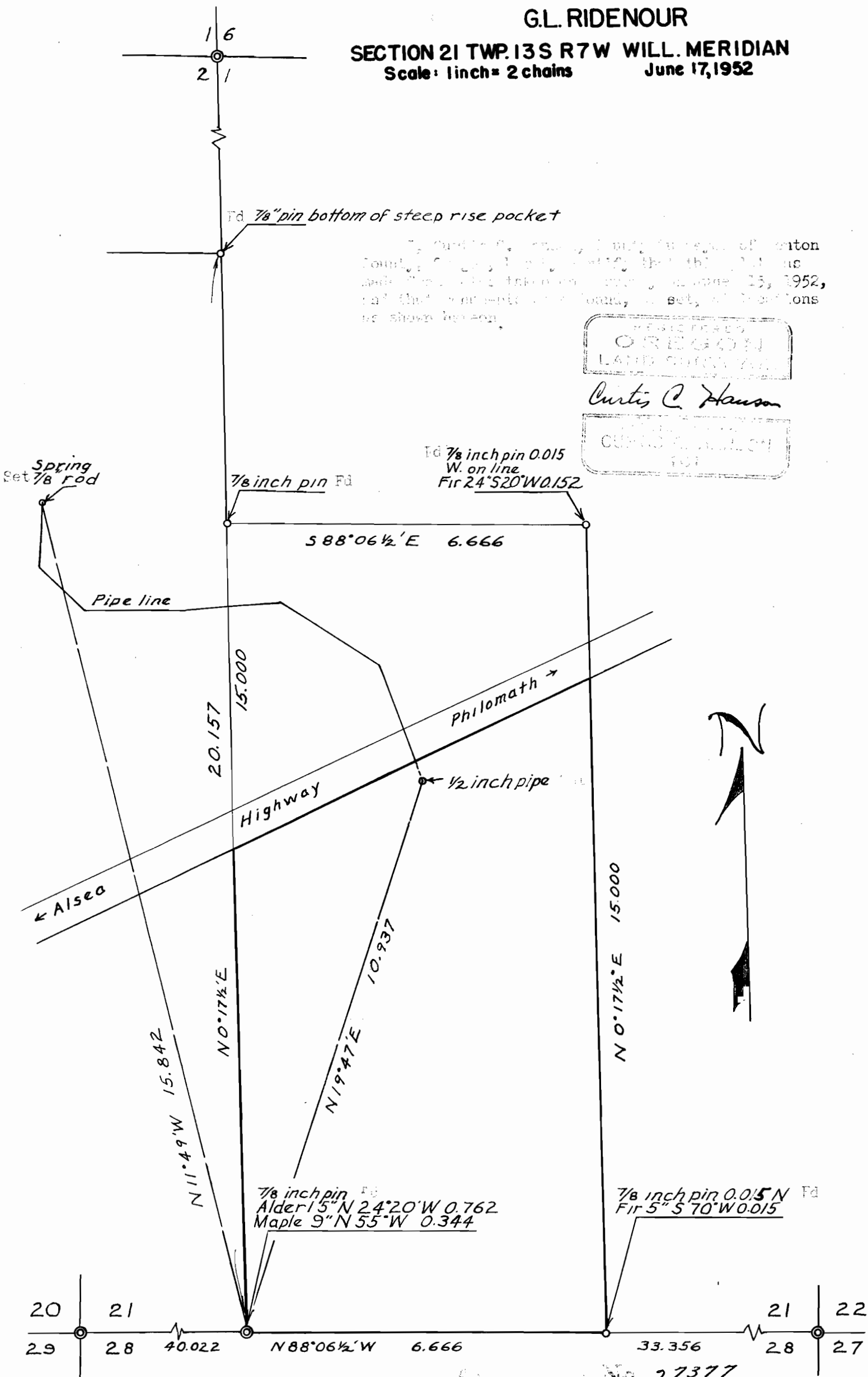
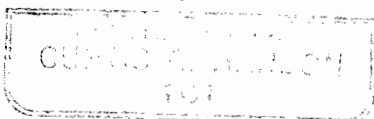
Scale: 1 inch = 2 chains

June 17, 1952

Curtis C. Hanson, County Surveyor of Marion County, Oregon, hereby certifies that this plat was made from a field taken on June 15, 1952, and that the monuments and bearings are set, and positions are shown hereon.



Curtis C. Hanson



No. 27377