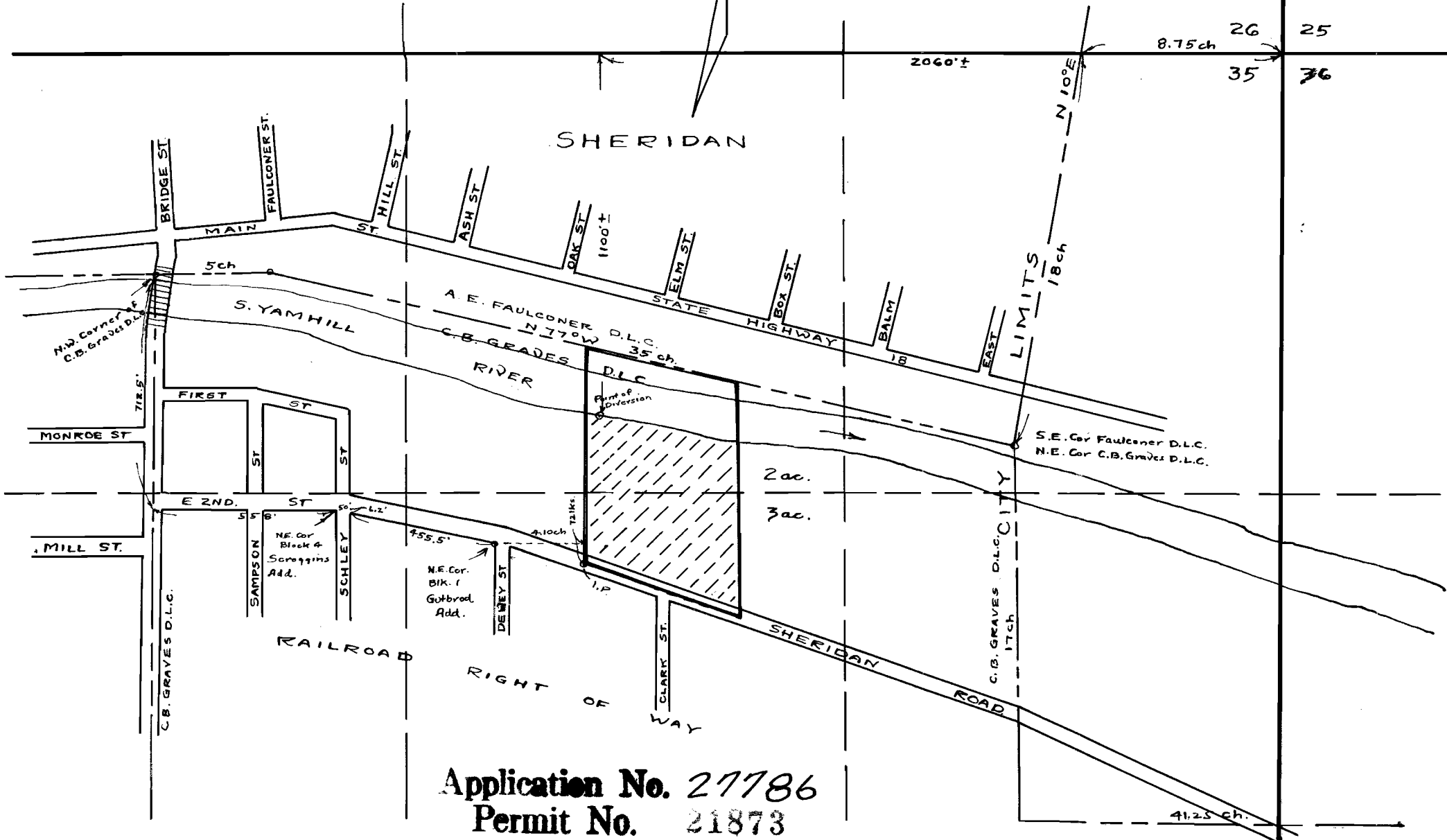


RECEIVED
 FEB 17 1953
 STATE ENGINEER
 OREGON

Plat of
 Geo.^{ne} Gertrude Crisp 7 Acres
 in the C. B. Graves Donation Land Claim
 in Section 35: Twp. 55: R. 6W. W.M.
 compiled from Aerial Photos; County Assessors' & Surveyors Records.
 By M. H. Kraft Scale 1" = 400'



Application No. 27786
Permit No. 21873