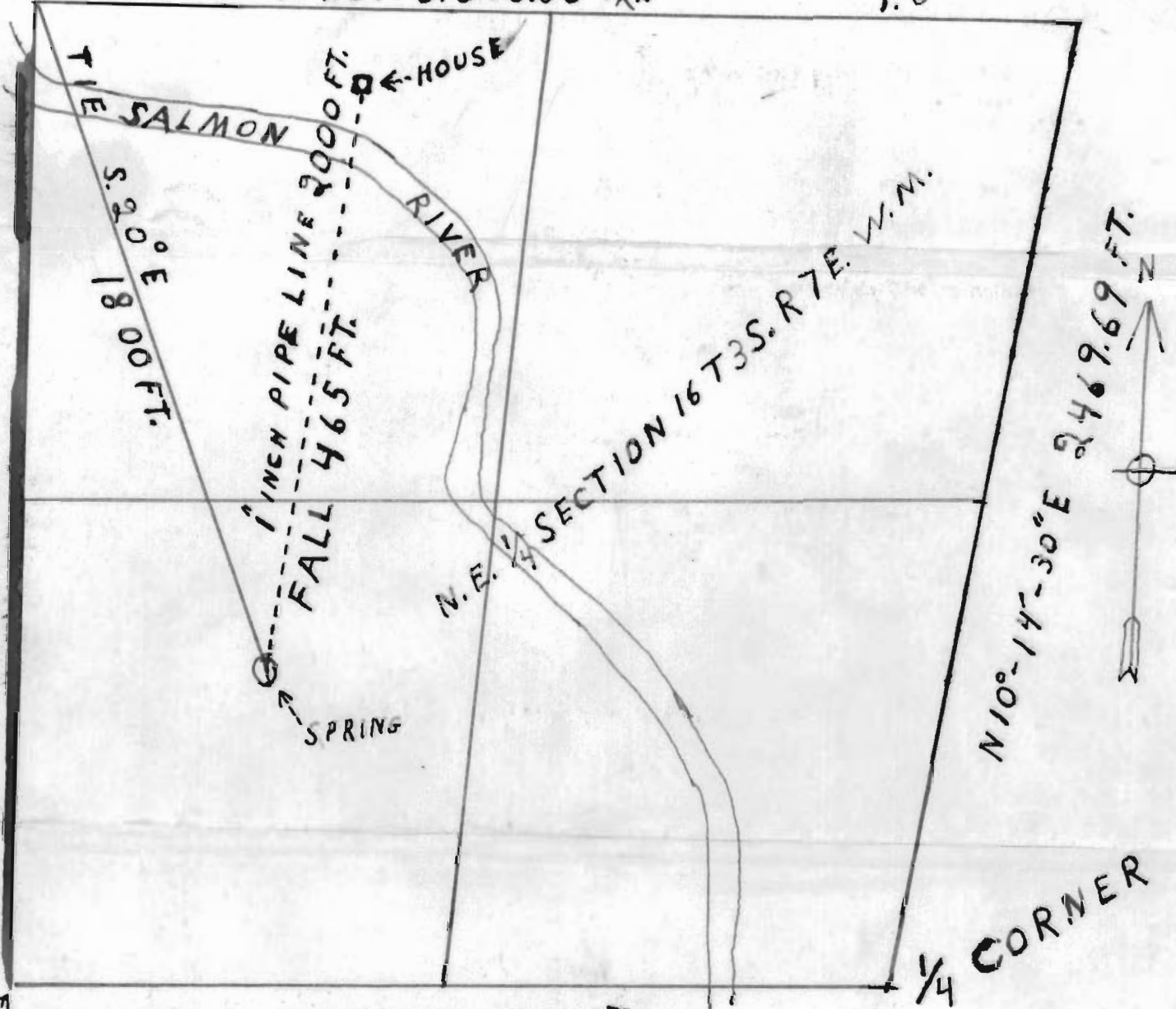


← 1/4 CORNER

WEST 2638.86 FT.

NE CORNER
SECTION #16
T.3S. R.7E. W.M.



SCALE 1 INCH = 400 FT.

MAP OF WATER SYSTEM AS PROPOSED BY
HARRY HOUSTON ABERNETHY
WELCHES, OREGON COUNTY OF CLACKAMAS

Application No. 21905
Permit No. 21979

RECEIVED
JAN 13 1953
STATE ENGINEER
SALEM, OREGON

CENTER OF SECTION