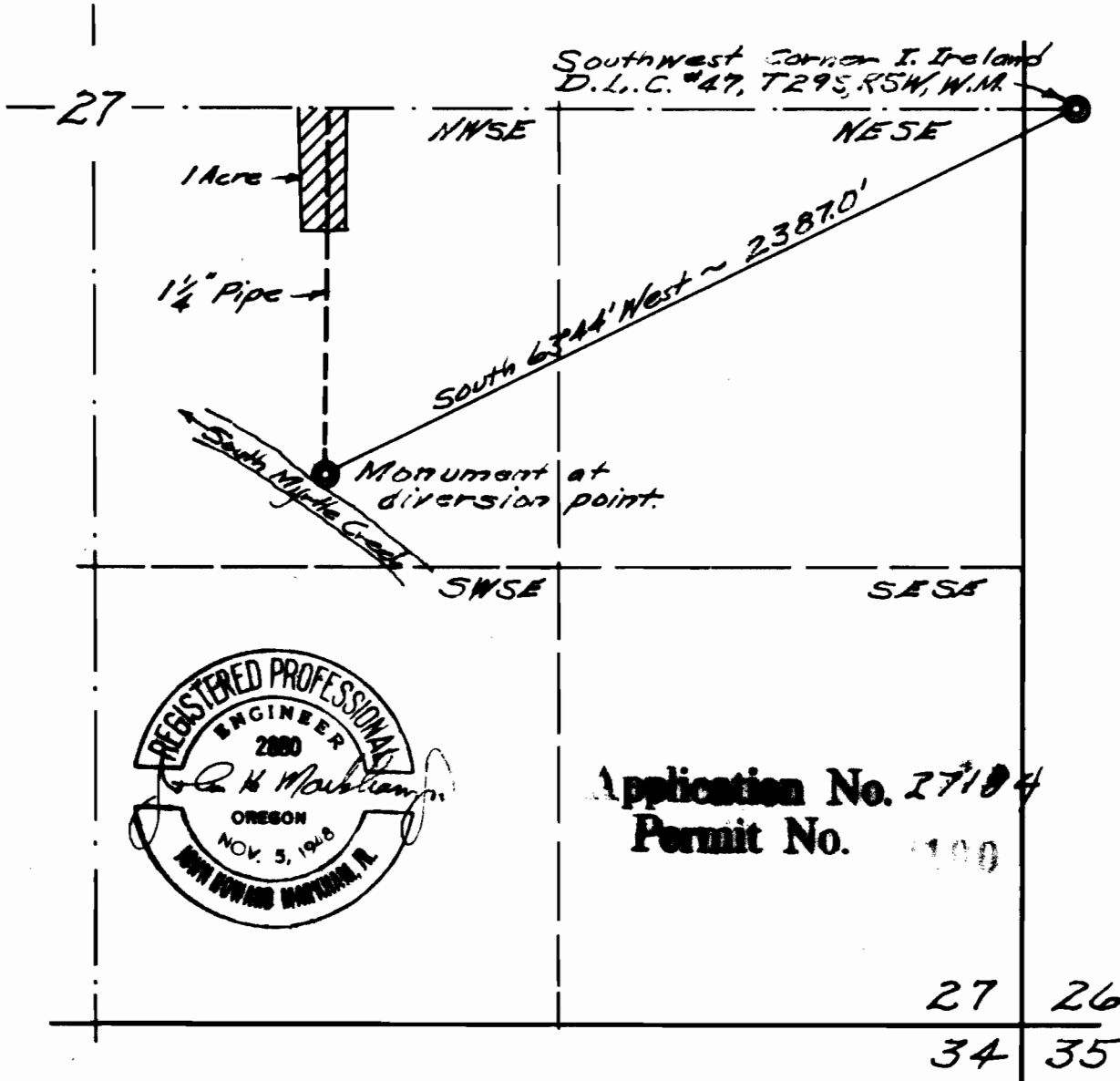


MAP  
of  
PROPOSED WATER RIGHT No. 27184  
for  
~ GEORGE A. GLESSNER ~  
Scale 1" = 500' May 1953

**RECEIVED**  
MAY 26 1953  
STATE ENGINEER  
SALEM, OREGON.



I, John H. Markham, Jr. of Riddle, Oregon do hereby certify that this map was made from notes taken during an actual survey made by me on May 18, 1953, that the monument shown on this map consisting of a 3/4" x 12" iron pipe driven 12" in ground, from which a Maple 6" diam. bears S73W 4.0' dist. mkd. W.R. B.T. & A Maple 4" diam. bears S11E 7.4' dist. mkd. W.R. B.T. The N.E. Corner of the Neal Lane Bridge bears S32°E 33.5' dist. The monument is S63°44'W, 2387.0' from the S.W. Cor. of D. L. C. #47, T29S, R5W, W.M.

*John H. Markham, Jr.*