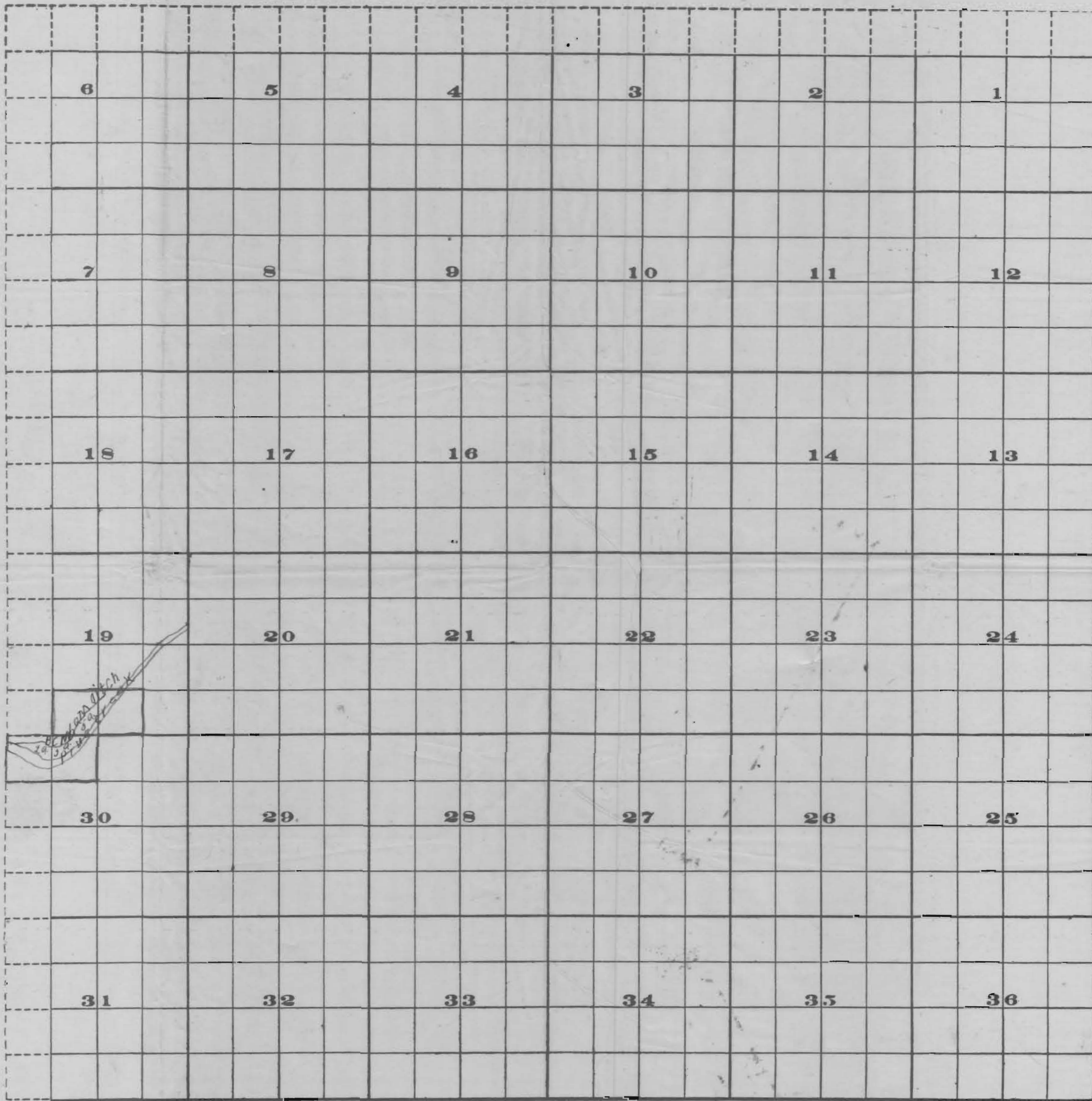


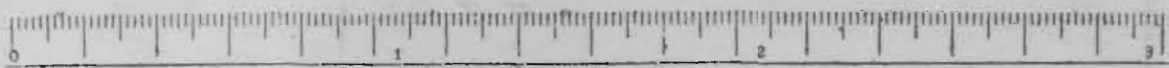
389A

Township 75, :

Range 48 E. 7th. M.



389A



Scale of Feet.

FROM OFFICE OF THE STATE ENGINEER, SALEM, OREGON

OFFICE OF STATE ENGINEER  
 RECEIVED  
 SEP 12 1914  
 SALEM, OREGON,

Application No.  
 Permit No.

389A  
 2213

389A

RECEIVED  
 SEP 13 1914  
 DIVISION OF CIVIL ENGINEERING  
 SALEM, OREGON

389A