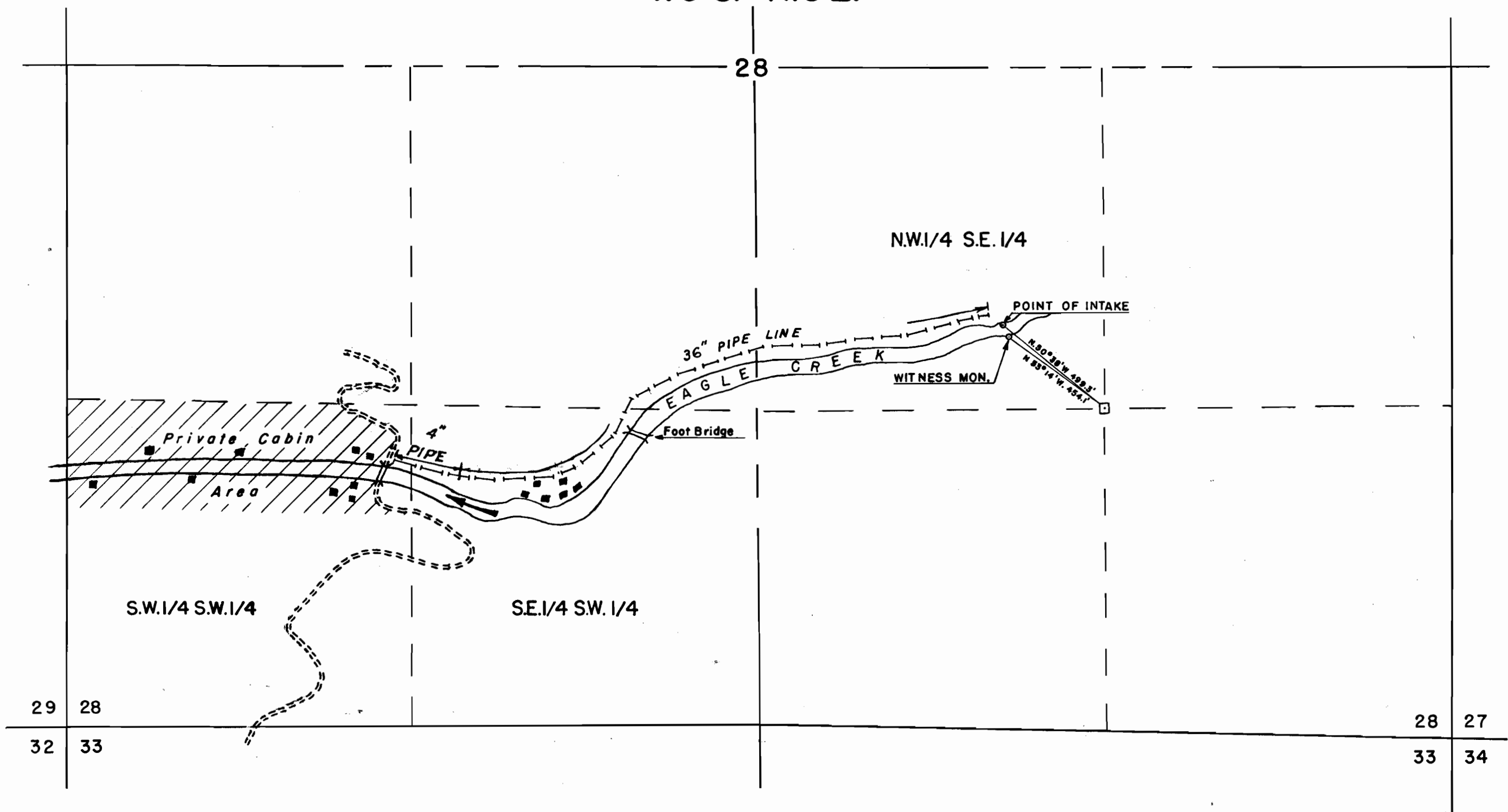




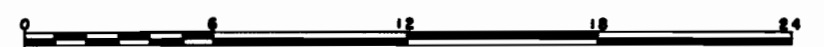
I, GEORGE L. DUCRET OF THE U.S. DEPT. OF THE INTERIOR F&W SERVICE DO HEREBY CERTIFY THAT THIS MAP WAS MADE FROM NOTES TAKEN DURING AN ACTUAL SURVEY MADE BY ME (OR UNDER MY IMMEDIATE SUPERVISION) IN SEPTEMBER, 1952 THAT THE MONUMENT SHOWN ON THIS MAP CONSISTING OF A FISH AND WILDLIFE SERVICE STANDARD CONCRETE POST MARKED "WITNESS MONUMENT TO INTAKE" IS SET S25°53'E. 49.4 FT. FROM THE POINT OF INTAKE AND N.53°15'W, 454.1' FROM THE SOUTHEAST CORNER OF THE NW.1/4 SE.1/4, SEC.28, T.3 S., R.5E.W.M.

George L. Ducret
CADASTRAL ENGINEER
U.S. DEPARTMENT OF THE INTERIOR

T.3 S. R.5 E.



SCALE 1" = 6 CHAINS



WILLAMETTE MERIDIAN

MAP
TO ACCOMPANY APPLICATION TO APPROPRIATE
WATER FROM EAGLE CREEK,
TRIBUTARY OF THE CLACKAMAS RIVER
IN THE STATE OF OREGON
BY
THE FISH AND WILDLIFE SERVICE
U.S. DEPARTMENT OF THE INTERIOR

Application No. 28576
Permit No. 22518

RECEIVED
JUN 30 1953
STATE ENGINEER
SALEM, OREGON