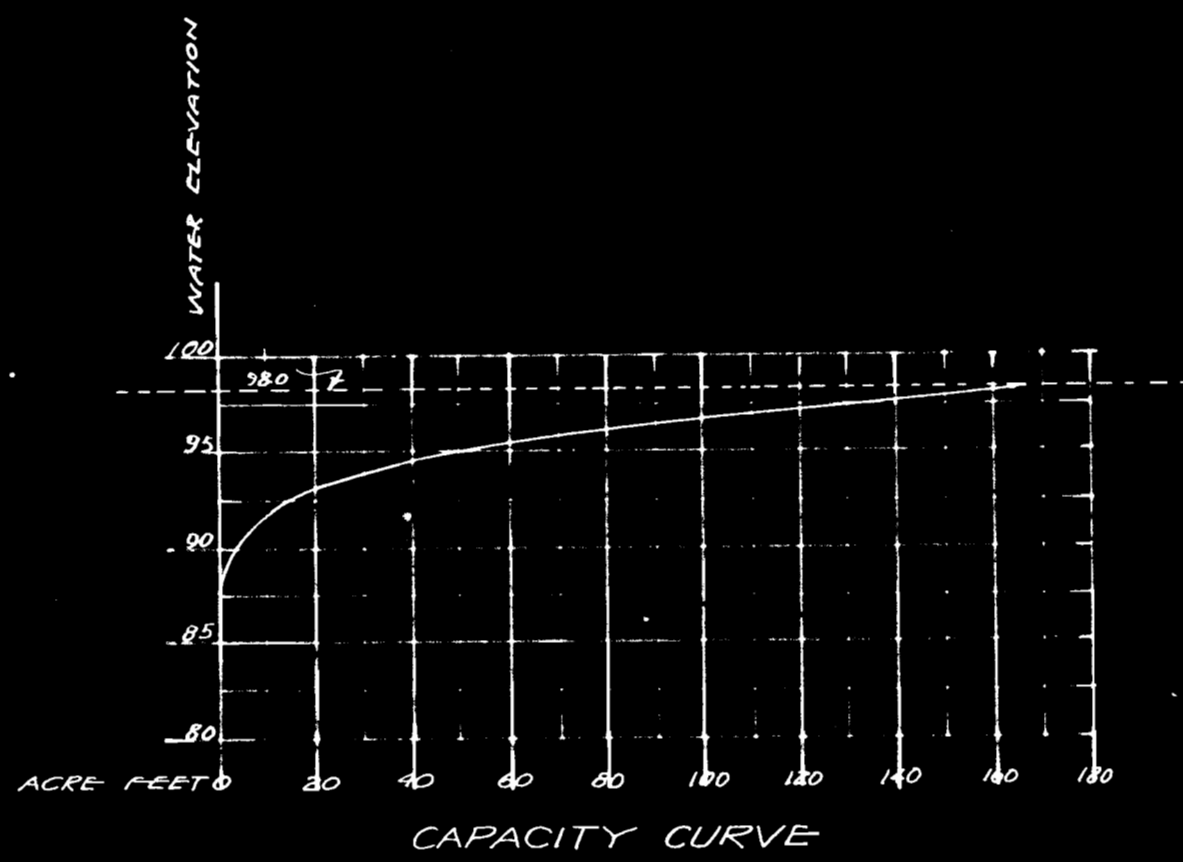


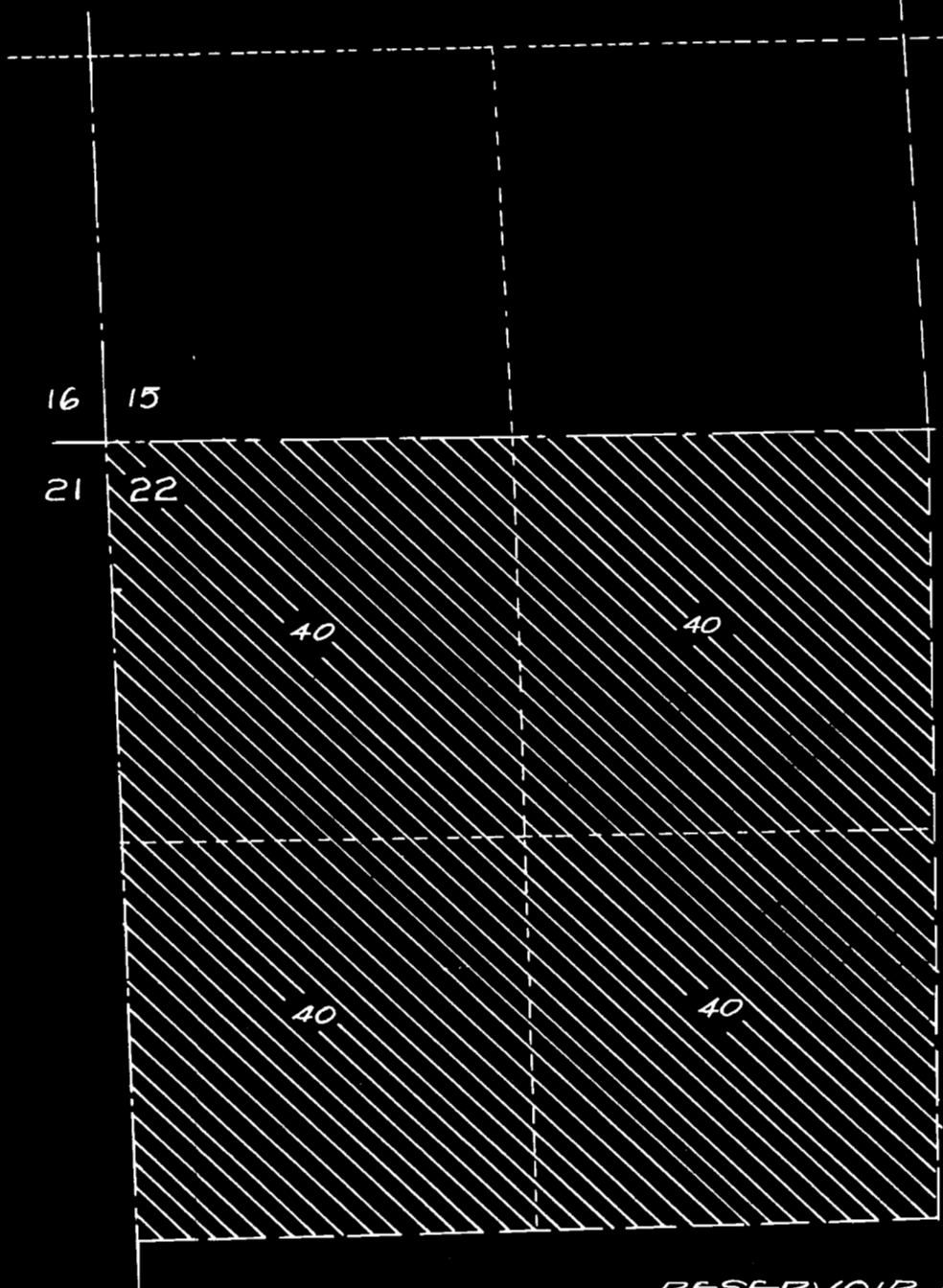
DRAINAGE AREA
SCALE 1 INCH = 1 MILE



CAPACITY CURVE



T. 36 S., R. 14 E., W.M.



RESERVOIR & AREA TO BE IRRIGATED
SCALE 1" = 600'

CERTIFICATE
This is to certify that I, Frank Z. Howard, civil engineer, of Klamath Falls, Oregon, made these maps and drawings from notes of surveys made by me or under my direction, and that the monument shown at the one quarter corner common to Secs. 14 & 15, T. 36 S., R. 14 E., W.M., is an iron rod in center of County Road.

Frank Z. Howard, C.E.

Frank Z. Howard

FRITZ CREEK RESERVOIR & LANDS TO BE IRRIGATED THEREFROM IN SECS. 15 & 22, T. 36 S., R. 14 E., W.M., ON BK RANCH	
SURVEYED FOR FREDERIC W. HYDE	
SURVEYED & DRAWN BY FRANK Z. HOWARD	
SCALE - AS SHOWN	JULY, 1953

C 28-16

R-28547
28648