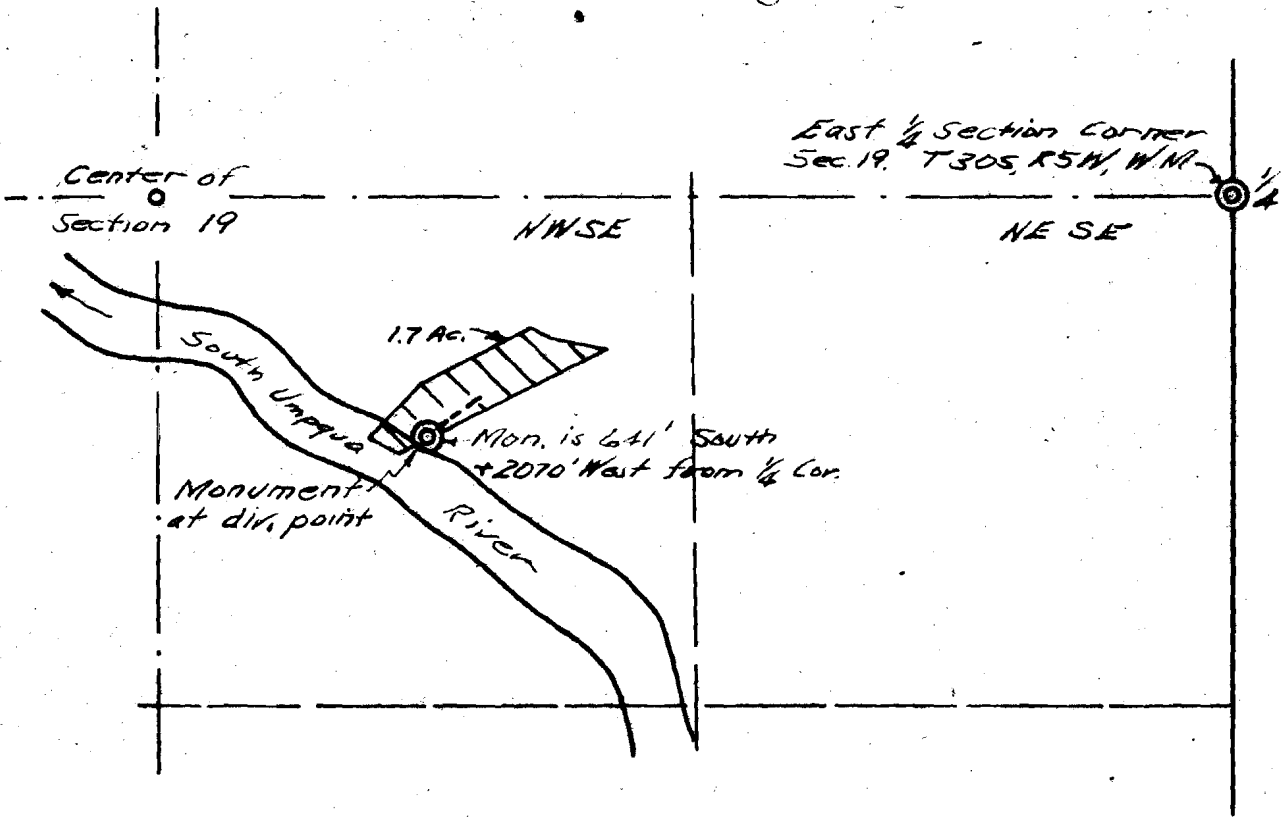


MAP
 of
 PROPOSED WATER RIGHT
 for
 ~ GORDON HARRY ~

Scale 1" = 500' July 1953.



I, John H. Markham, Jr. of Riaska, Oregon do hereby certify that this map was made from notes taken during an actual survey made by me on July 10, 1953, that the monument shown on this map consists of a 1" x 24" iron pipe set in a pile of stones from which a 9" Maple bears N44°W 54.0' dist. mid. W.R. B.T. A 15" W.O. bears 159°E 53.0' dist. mid. xxx B.T. The monument is 641.0' South and 2070.0' West from the East 1/4 Section Corner, Sec. 19, T30S, R5W, W1N, Douglas County, Oregon.

RECEIVED
 JUL 31 1953
 STATE ENGINEER
 SALEM, OREGON

John H. Markham Jr.
 Application No. 25672
 Permit No. 22578
 28672