

I, Tom R. Pearce, of Grants Pass Oregon, do hereby certify that this map was made from notes taken during an actual survey made by me and from copy of State Engineer and aerial maps, during October 1953.

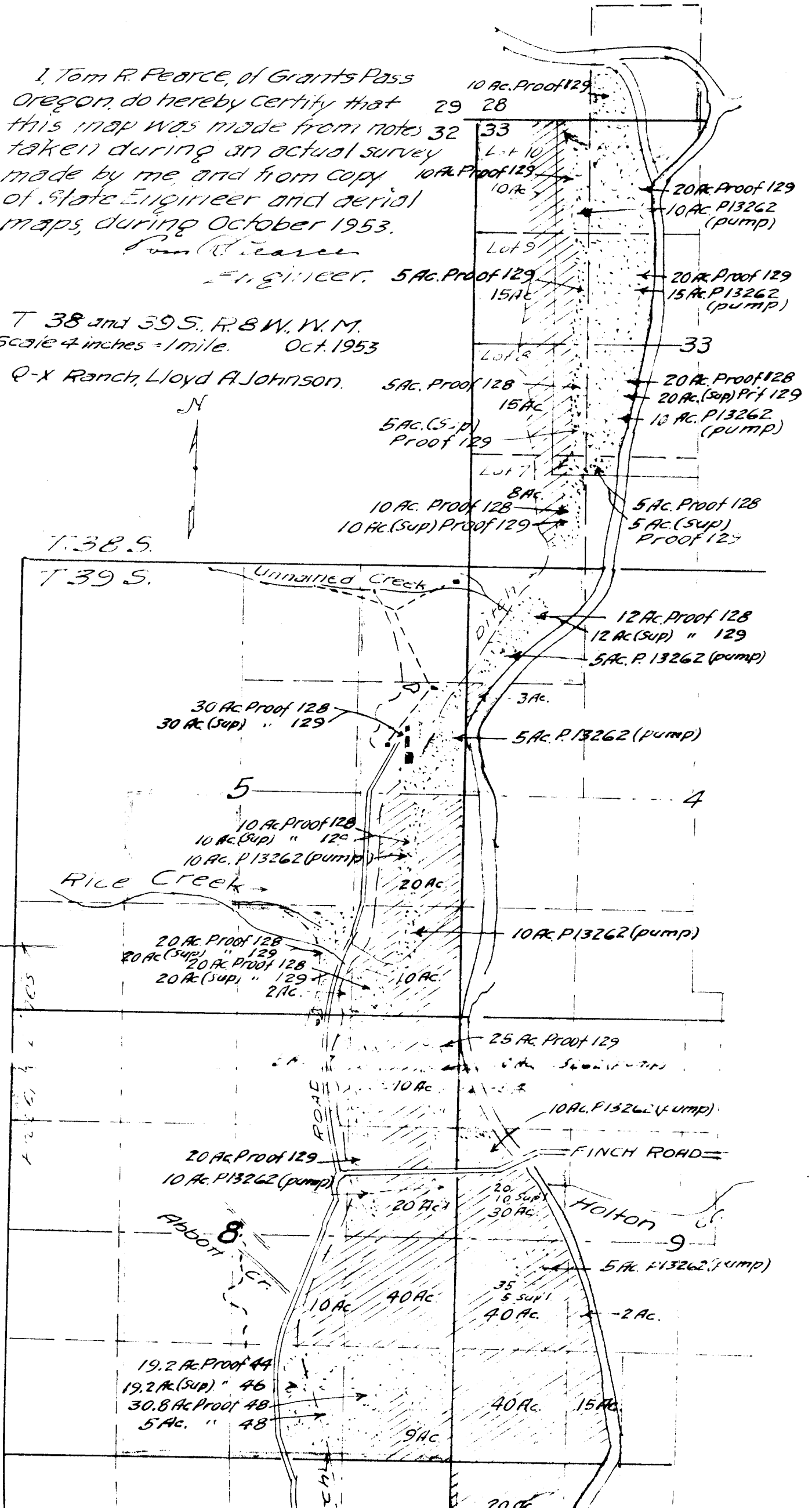
Tom R. Pearce

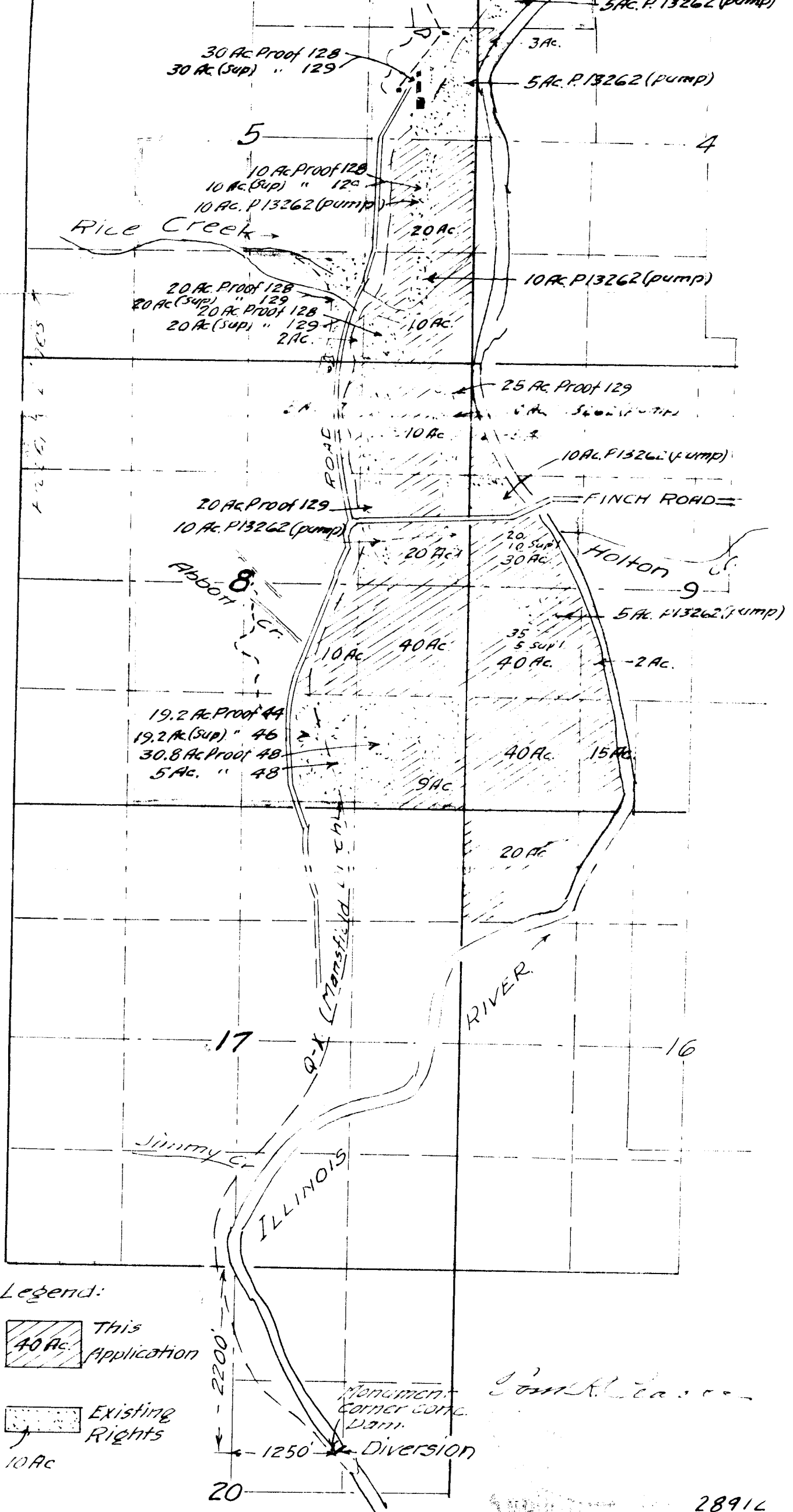
Engineer.

T 38 and 39 S., R. 8 W., W.M.  
Scale 4 inches = 1 mile. Oct. 1953

Q-X Ranch, Lloyd A. Johnson.

N





28914  
22719