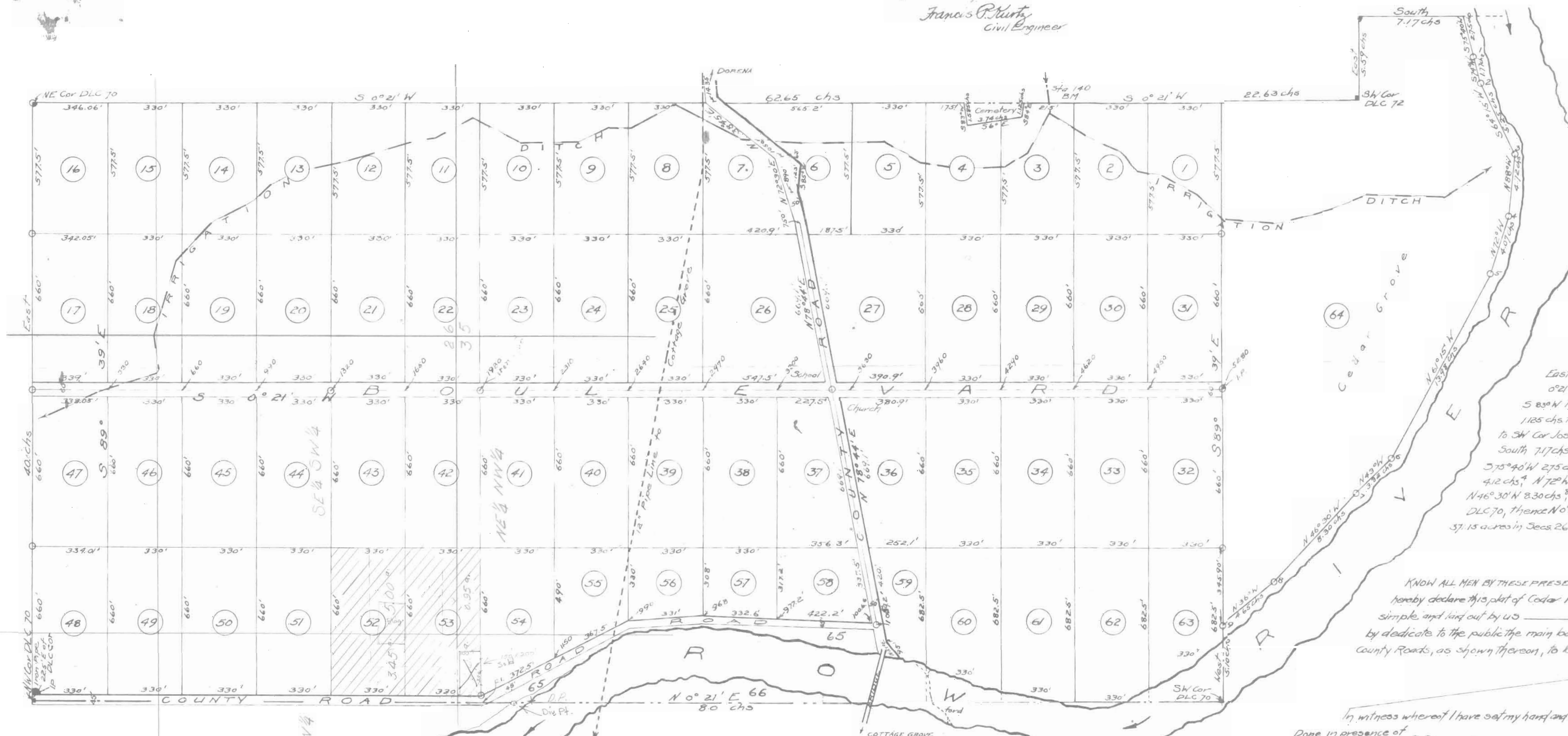
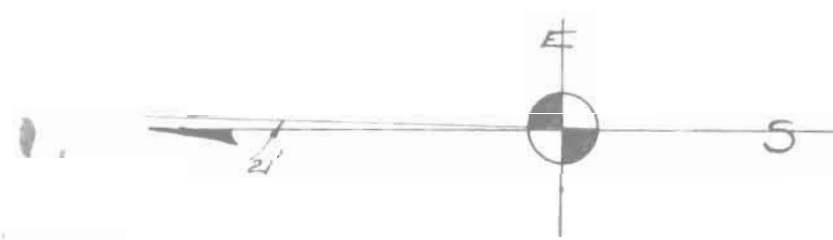


# MAP OF CEDAR PARK

NEAR COTTAGE GROVE ORE

Scale 1 inch = 300 feet — September 1910

Francis R. Kurts  
Civil Engineer



Beginning at a stone monument described as the NW Cor of the Robt Alexander DLC #70, thence East 40 chs to the NE Cor DLC #70, thence S 0°21' W 62.65 chs to the N line of Cemetery, thence S 89°W 1.58 chs, thence S 6°E 3.74 chs, thence S 84°E 1.165 chs to East line of DLC #70, thence S 0°21' W 22.63 chs to SW Cor Joseph Gate DLC #72, thence East 53.4 chs, thence South 71.7 chs to N bank of Row River, thence meander 3.75°40' W 2.5 chs, S 78° W 1.77 chs, S 69°15' W 5.25 chs, N 88° W 4.12 chs, N 72° N 4.07 chs, N 61°5' W 13.98 chs, N 45° N 3.32 chs, N 46°30' N 8.30 chs, N 36° W 4.65 chs, East 5.10 chs to the SW Cor DLC #70, thence N 0°21' E 80.0 chs to point of beginning containing 37.15 acres in Secs 26 and 135 T. 20 S, Range 34, N. Lane County - Oregon

KNOW ALL MEN BY THESE PRESENTS: That I, John F. Spray and Mary E. Spray, wife hereby declare this plat of Cedar Park to be a true plat of property owned in fee simple and laid out by us and do hereby dedicate to the public the main boulevard and roadway connecting the present County Roads, as shown thereon, to be used as such forever.

In witness whereof I have set my hand and seal this 15<sup>th</sup> day of October 1910  
Done in presence of  
G. L. Coe  
H. H. Hynes

I, Francis R. Kurts, being first duly sworn on oath say, that I a civil engineer by occupation, have surveyed and marked with proper monuments the land covered by this plat, that I set an iron pipe 2" in diameter as required by Law for the initial point of Platting 22.5' E from the NW Cor to DLC #70, and that the boundaries, lots and roads are correctly represented on this Plat.  
Approved this day of 13<sup>th</sup> November 1910  
County Judge Edwards  
County Commissioner Edwards  
County Commissioner H. M. Fries  
County Assessor Benjamin F. Hensley  
County Surveyor Charles M. Collier  
Record Number

Subscribed to by and sworn before me this 27<sup>th</sup> day of October 1910  
Charles H. Handy  
Notary Public for Oregon

On this 15<sup>th</sup> day of October personally came before me, a notary public, in and for said county and State, the above named John F. Spray and Mary E. Spray, personally known to me to be the identical persons described in and who executed the above instrument and acknowledged to me that they executed the same freely and for the purposes therein mentioned and named.  
In witness whereof I have hereto set my hand and affixed my official seal, this 15<sup>th</sup> day of October 1910.  
G. L. Coe  
Notary Public for Oregon



FILED  
10 o'clock M  
DEC - 3 1910  
Elmer Registrar  
By John F. Spray  
John F. Spray

