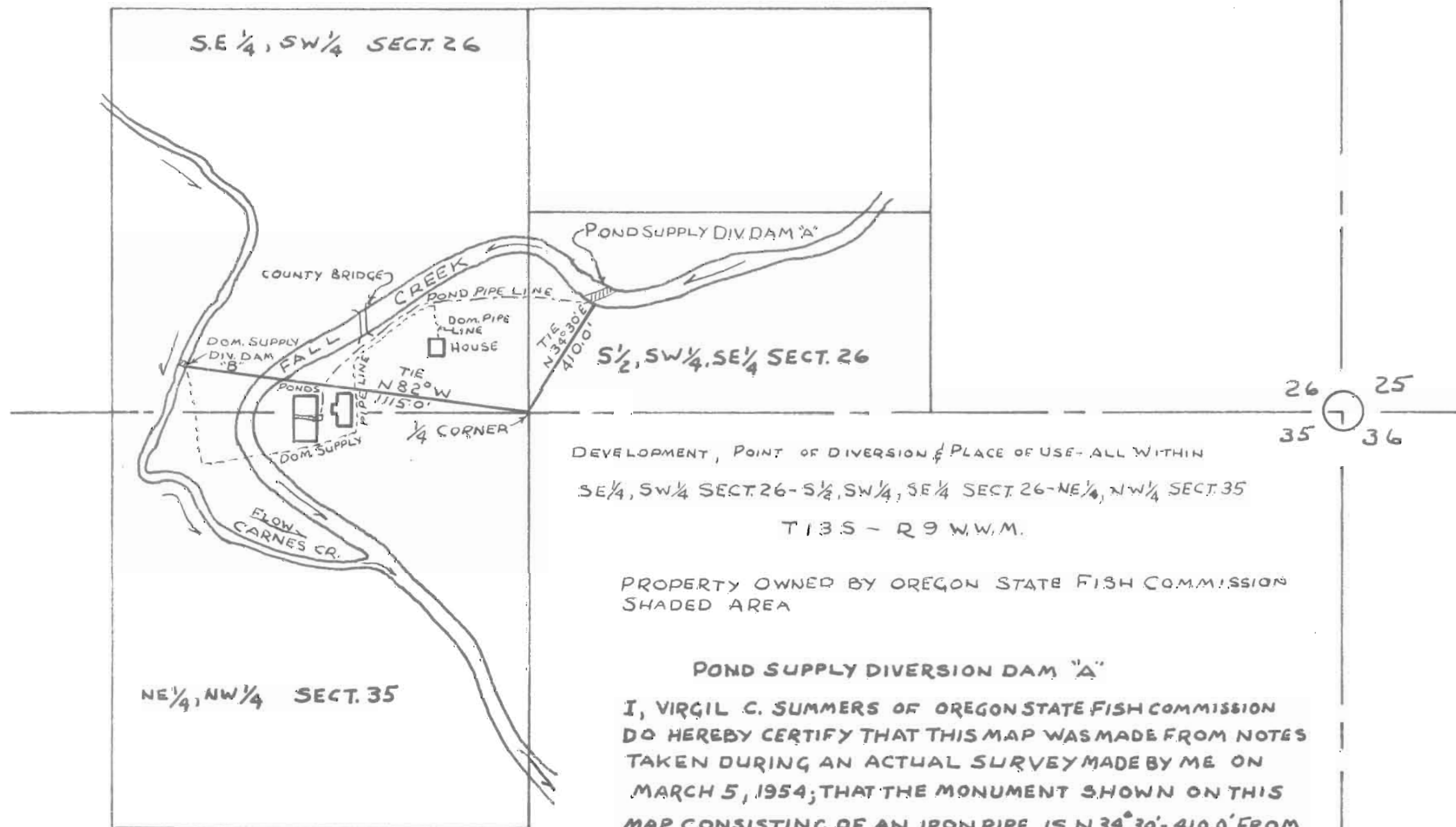


DOMESTIC FISH CULTURE SUPPLY DIVERSION DAM "B"

I, VIRGIL C. SUMMERS OF OREGON STATE FISH COMMISSION DO HEREBY CERTIFY THAT THIS MAP WAS MADE FROM NOTES TAKEN DURING AN ACTUAL SURVEY MADE BY ME ON APRIL 2, 1952; THAT THE MONUMENT SHOWN ON THIS MAP CONSISTING OF AN IRON PIPE IS N 82° W - 1115.0' FROM 1/4 CORNER COMMON TO SECT. 26 & 35 T13S R9W.W.M.

*Virgil C. Summers*



DEVELOPMENT, POINT OF DIVERSION & PLACE OF USE - ALL WITHIN  
 SE 1/4, SW 1/4 SECT. 26 - S 1/2, SW 1/4, SE 1/4 SECT. 26 - NE 1/4, NW 1/4 SECT. 35  
 T13S - R9W.W.M.

PROPERTY OWNED BY OREGON STATE FISH COMMISSION  
 SHADED AREA

POND SUPPLY DIVERSION DAM "A"

I, VIRGIL C. SUMMERS OF OREGON STATE FISH COMMISSION DO HEREBY CERTIFY THAT THIS MAP WAS MADE FROM NOTES TAKEN DURING AN ACTUAL SURVEY MADE BY ME ON MARCH 5, 1954; THAT THE MONUMENT SHOWN ON THIS MAP CONSISTING OF AN IRON PIPE IS N 34° 30' - 410.0' FROM 1/4 CORNER COMMON TO SECT. 26 & 35 T13S R9W.W.M.

*Virgil C. Summers*

SCALE: 1" = 400.0'