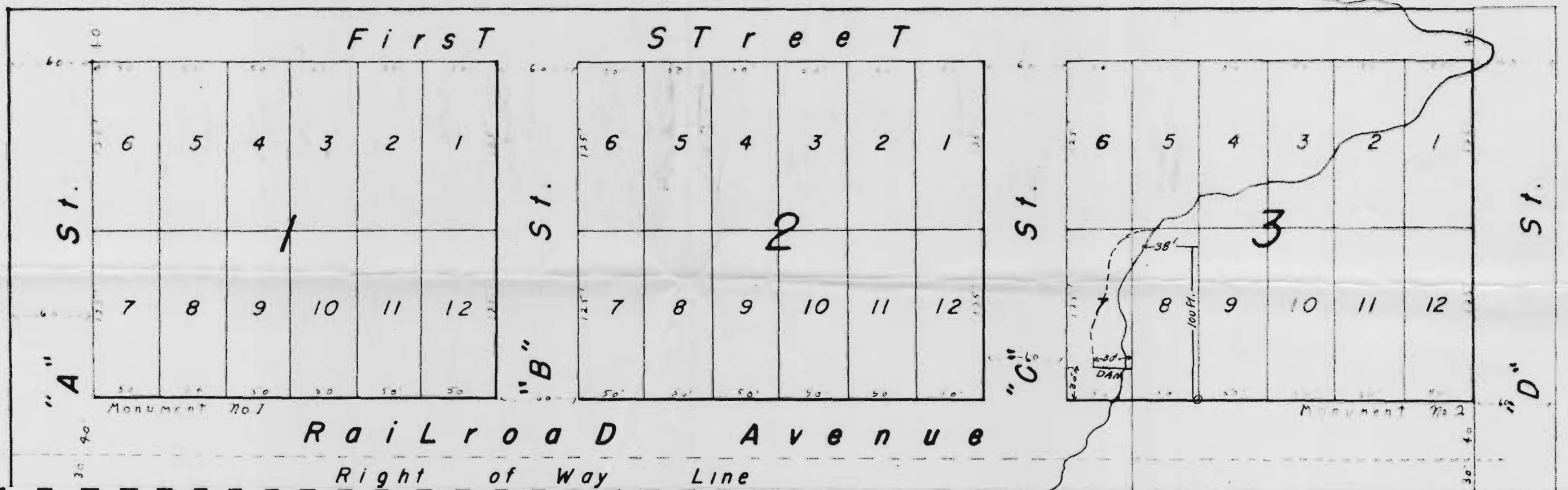


11-10-28

# MINTO

in the  
S 1/2 of THE S.E. 1/4 of Sec 25  
in  
T.9.S. R.3 E.

Tracing of Page 13 Vol. 3  
Marion County Town PLATS



12 30 N of 1/4 Sec 25  
between Sec 25 & 36  
Corner

S. 67° 15' E.

O. P. R. R.

LEEDY

All within S.W. 1/4 SE 1/4

Application No. 29094  
Permit No. 22916

S A N T I A M R I V E R

Scale 1" = 80'