

ROSEBURG HOME-ORCHARD TRACTS

RECEIVED
APR 5 1954
STATE ENGINEER
SALEM, OREGON

DOUGLAS COUNTY, OREGON.

Being Donation Land Claim No. 37, T. 26 S.; R. 7 W. and Donation Land Claims No's 58 and 59 and the North half of the North half of Claim No. 40 also the N.E. 1/4 of the S.W. 1/4 and Lots No's. 6, 7, 8, 9, 10, 11, 12 and 13 of Sec. 20, T. 26 S.; R. 6 W.; W. M.

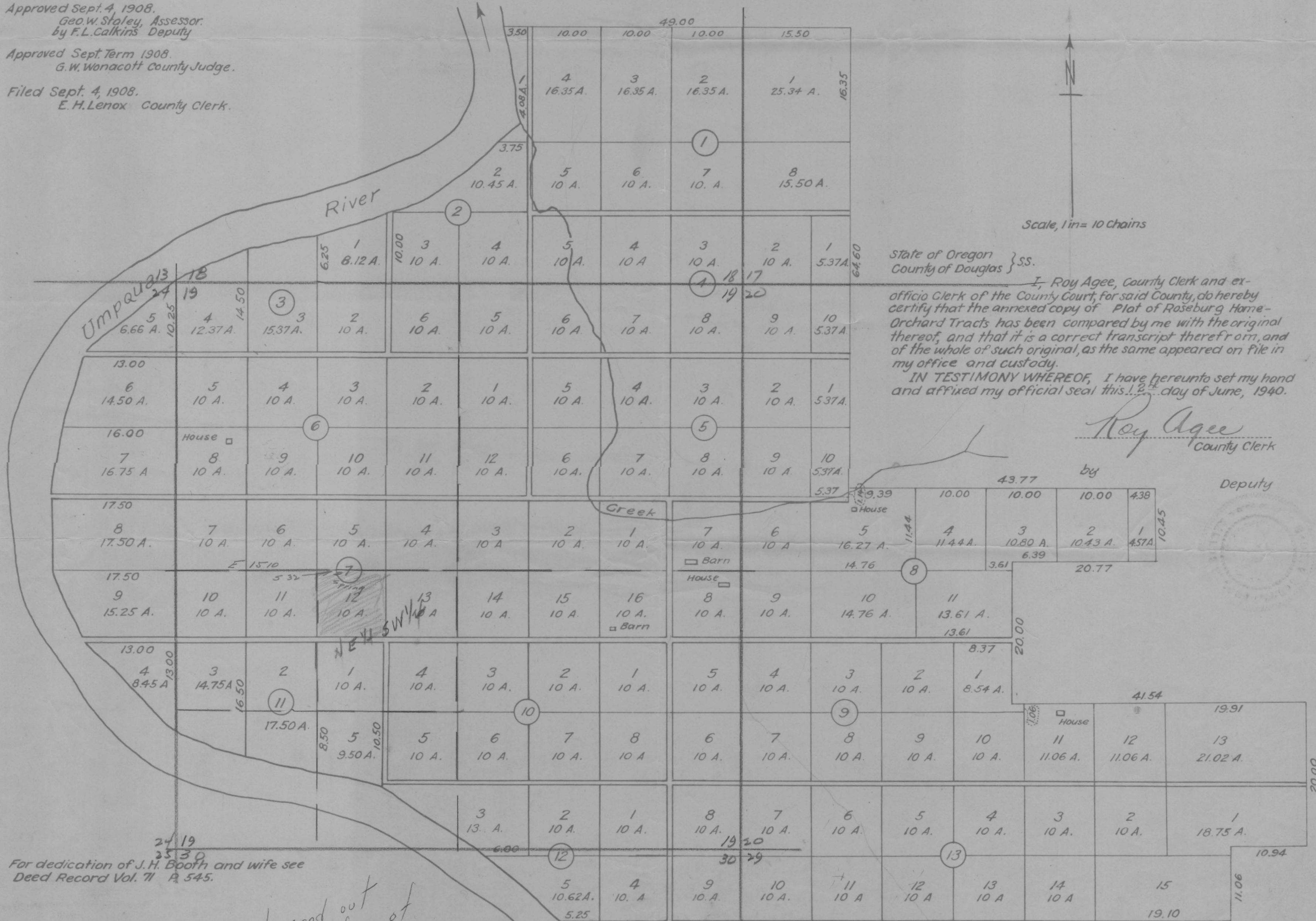
ROBERTS AND GERMOND
CIVIL ENGINEERS
1908

Approved Sept. 4, 1908
G. E. Roberts, County Surveyor

Approved Sept. 4, 1908,
Geo. W. Staley, Assessor.
by F. L. Calkins Deputy

Approved Sept. Term 1908.
G. W. Wonacott County Judge.

Filed Sept. 4, 1908.
E. H. Lenox County Clerk.



State of Oregon } ss.
County of Douglas }

I, Roy Agee, County Clerk and ex-officio Clerk of the County Court, for said County, do hereby certify that the annexed copy of Plat of Roseburg Home-Orchard Tracts has been compared by me with the original thereof, and that it is a correct transcript therefrom, and of the whole of such original, as the same appeared on file in my office and custody.

IN TESTIMONY WHEREOF, I have hereunto set my hand and affixed my official seal this 12th day of June, 1940.

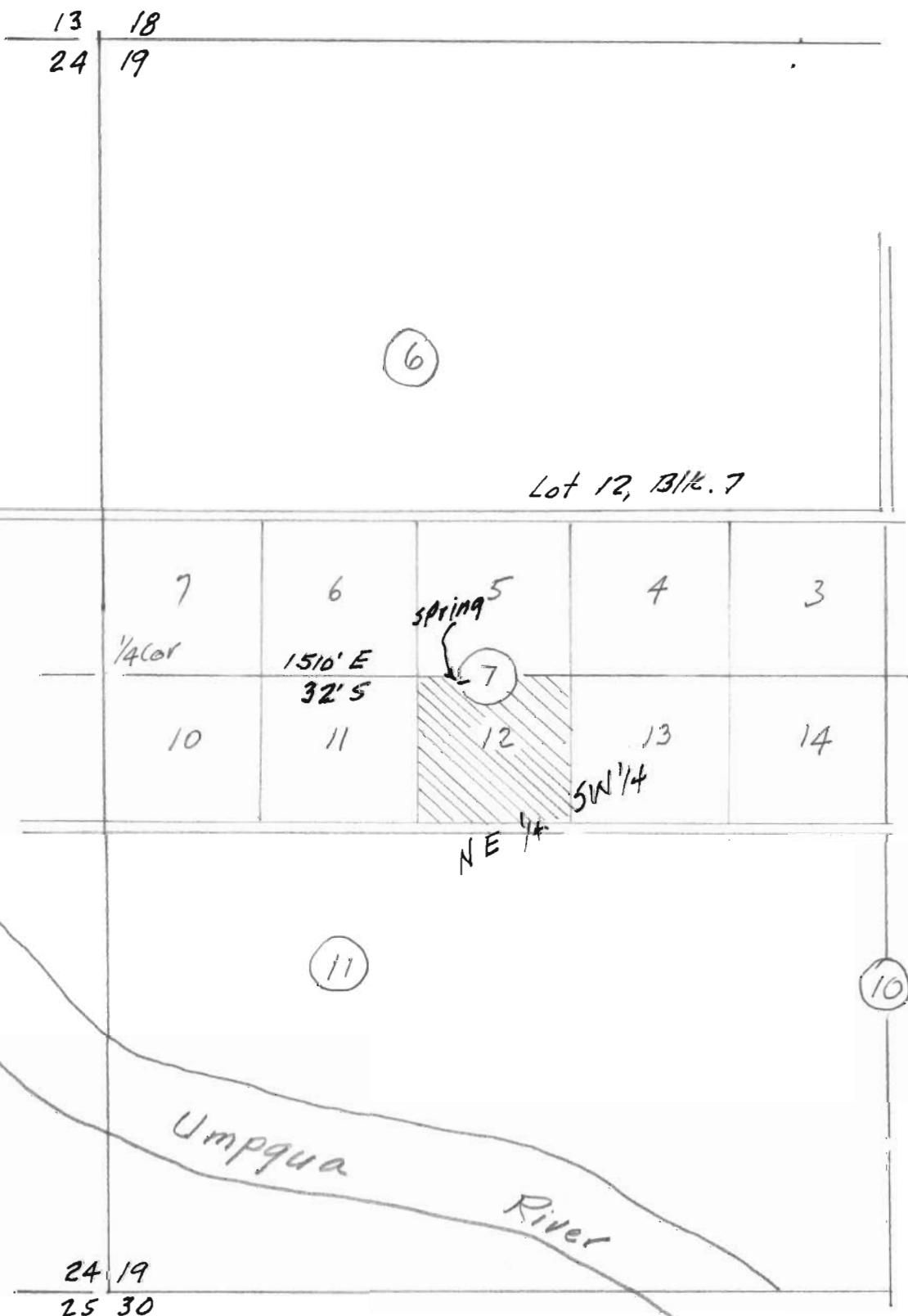
Roy Agee
County Clerk

Deputy

For dedication of J. H. Booth and wife see
Deed Record Vol. 71 P. 545.

Do not send out
of office of
State Engineer

Application No. 29102
Permit No. 22919



Roseburg Home Orchard Tracts

1" - 10 chs.

Appl. 29102

Per. 22912