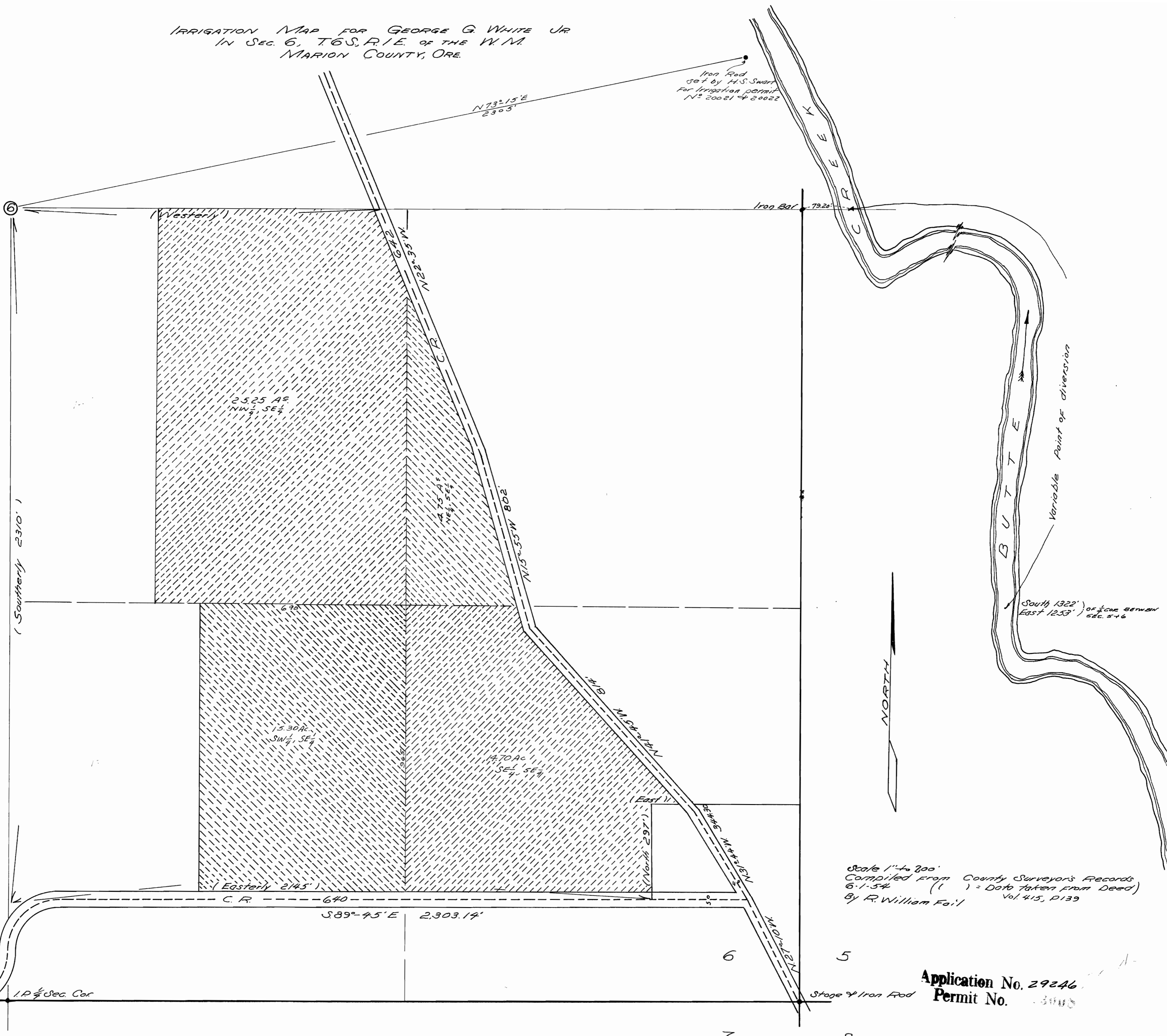


IRRIGATION MAP FOR GEORGE G. WHITE JR
 IN SEC. 6, T6S, R1E, OF THE W.M.
 MARION COUNTY, ORE.



Scale 1" = 200'
 Compiled from County Surveyor's Records
 6-1-54 (1) = Data taken from Deed
 By R. William Fail Vol. 415, P. 139

Application No. 29246
 Permit No. 3008