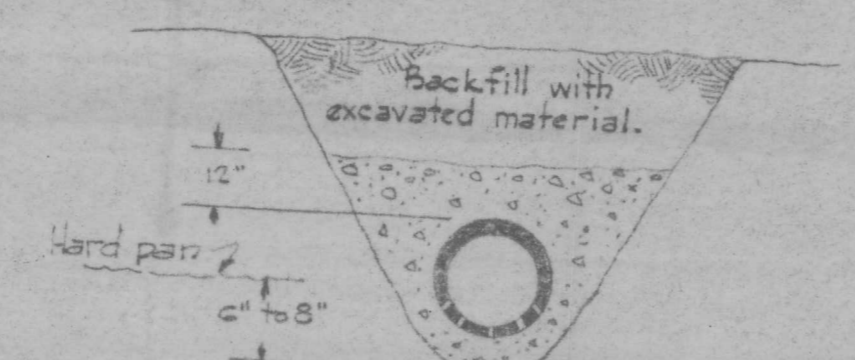
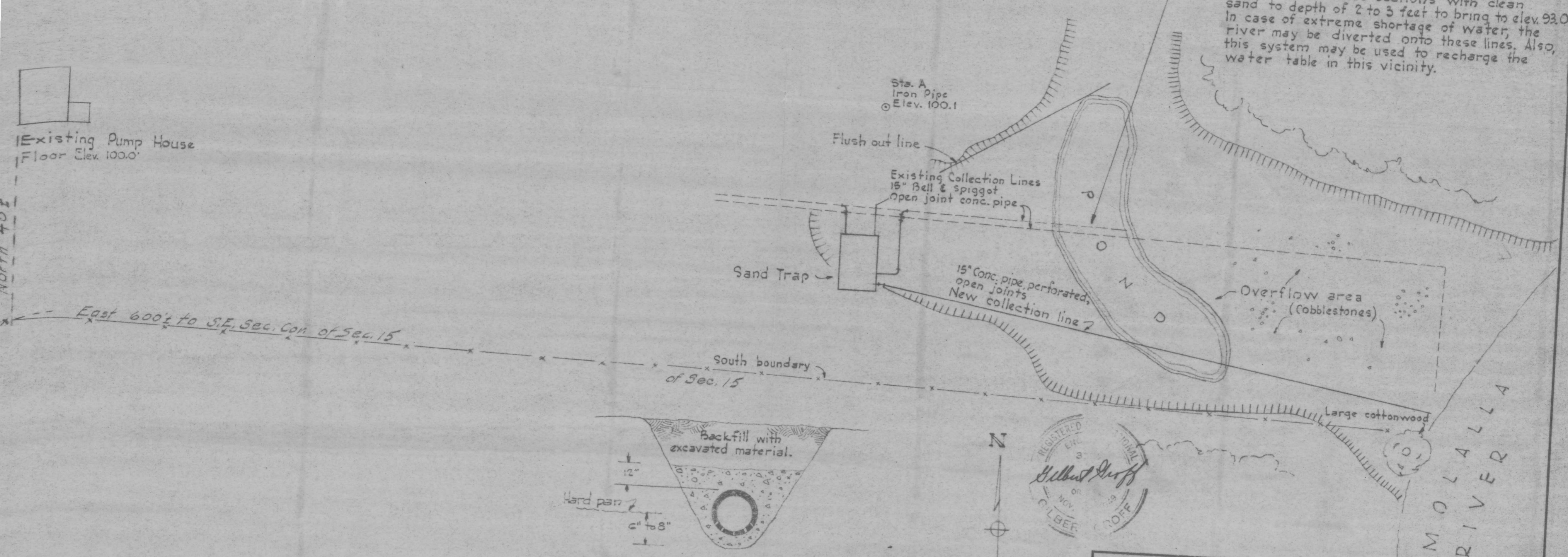


Existing Pump House
Floor Elev. 100.0'

NOTE: It is desirable to replace 20 to 30 feet of the existing collection lines in pond with perforated tile pipe similar to new line. Backfill over these sections with clean sand to depth of 2 to 3 feet to bring to elev. 93.0. In case of extreme shortage of water, the river may be diverted onto these lines. Also, this system may be used to recharge the water table in this vicinity.



DETAIL OF PIPE TRENCH
No scale

Note: Cut into hard pan 6" to 8", backfill at least 4" with washed gravel 1/2" to 3/4", lay tile with perforations downward, surround and cover tile to 12" depth with same washed gravel.



RECEIVED
AUG 17 1954
STATE ENGINEER
SALEM, OREGON

| | |
|--|---|
| CITY OF MOLALLA, OREGON | |
| WATER SUPPLY IMPROVEMENTS LAYOUT OF COLLECTION SYSTEM | |
| SCALE 1" = 20 ft. | DATE July 21, 1953 |
| DRWG. B.C. | NO. 5321-228 |
| DSGN. L.K.C. | CLARK & GROFF ENGINEERS 3245 S. COMMERCIAL ST. SALEM, OREGON |
| CHECKED | |
| | SHEET NO. |