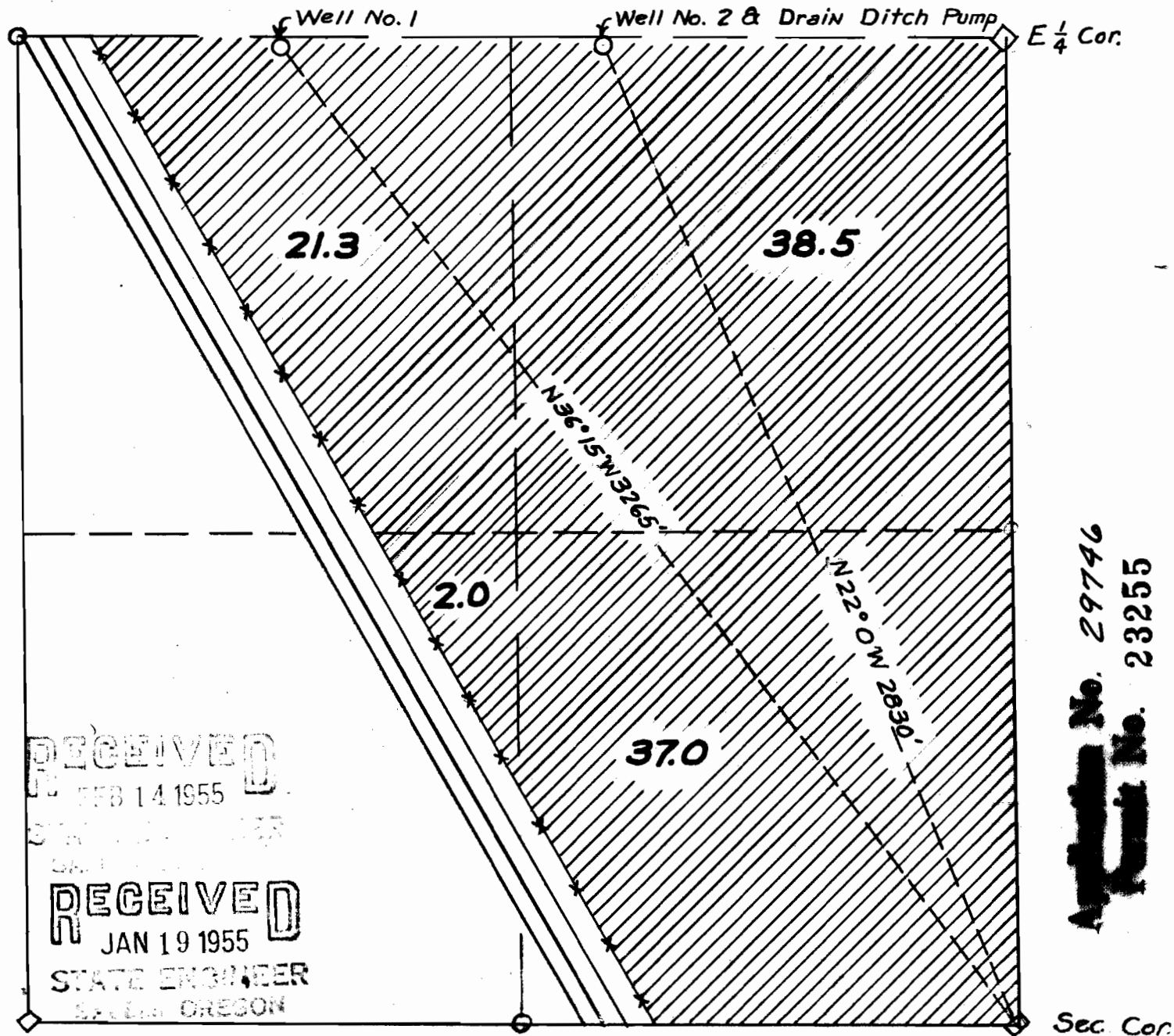


98.8 Acres to be watered from pumping by

O. E. Carman in the SE  $\frac{1}{4}$  Sec. 36 T17 S.R. 44 E.W.M.



Appl. No. 29746  
Plat. No. 23255

I, Ed Bates of Vale Oregon, do hereby certify that this map was made from notes taken under my immediate supervision on Dec. 3, 1954; that the wells shown on this map are 3265' N36°15'W and 2830' N 22°0'W from the SE Sec. Corner

Edwin F. Bates 29146