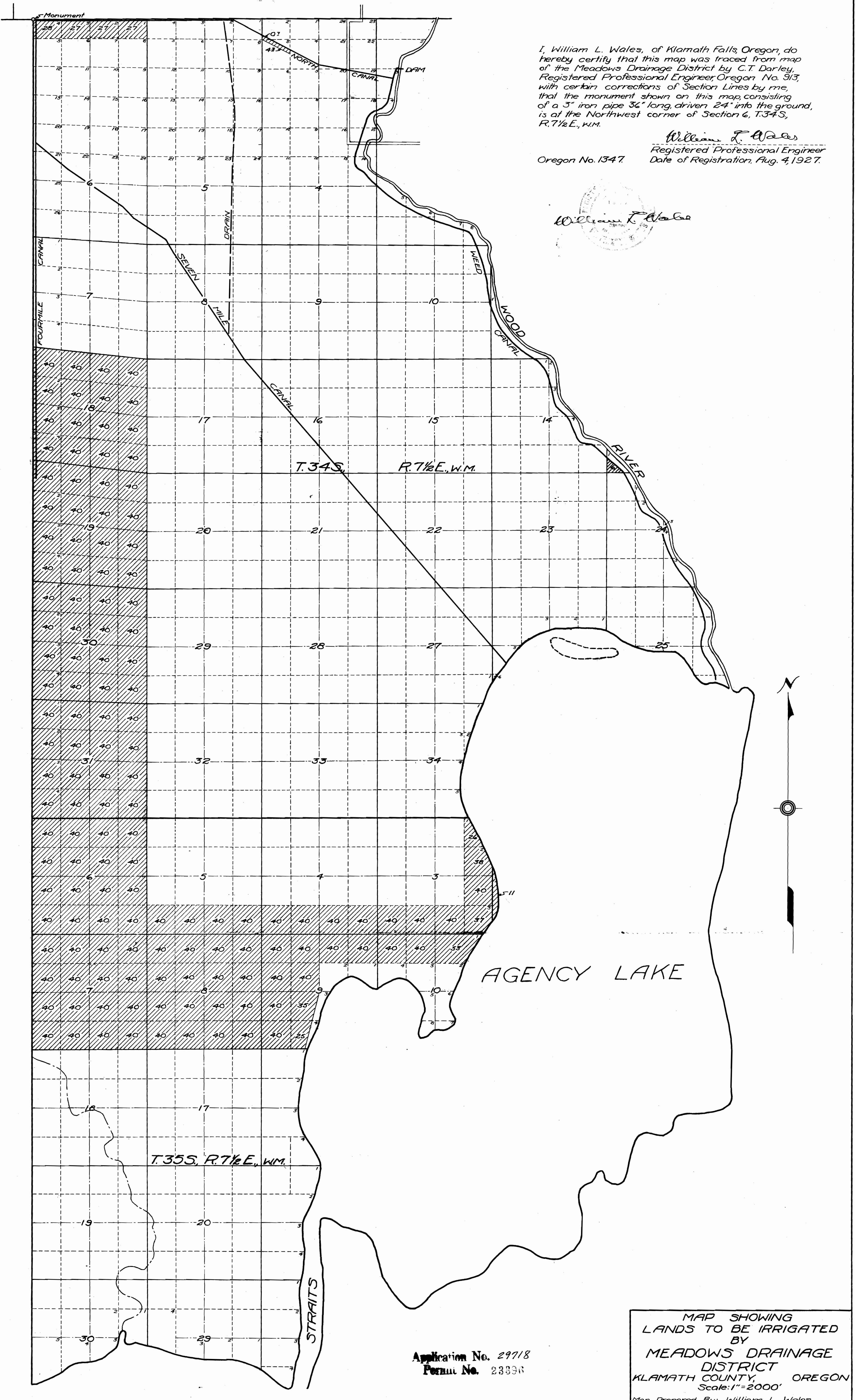


I, William L. Wales, of Klamath Falls, Oregon, do hereby certify that this map was traced from map of the Meadows Drainage District by C.T. Darley, Registered Professional Engineer, Oregon No. 913, with certain corrections of Section Lines by me, that the monument shown on this map, consisting of a 3" iron pipe 36" long, driven 24" into the ground, is at the Northwest corner of Section 6, T.34S, R.7 1/2 E., W.M.

William L. Wales
 Registered Professional Engineer
 Oregon No. 1347 Date of Registration, Aug. 4, 1927.

William L. Wales



Application No. 29718
 Permit No. 23396

MAP SHOWING
 LANDS TO BE IRRIGATED
 BY
 MEADOWS DRAINAGE
 DISTRICT
 KLAMATH COUNTY, OREGON
 Scale: 1"=2000'
 Map Prepared By: William L. Wales
 Civil & Hydraulic Engineer
 Klamath Falls, Oregon.