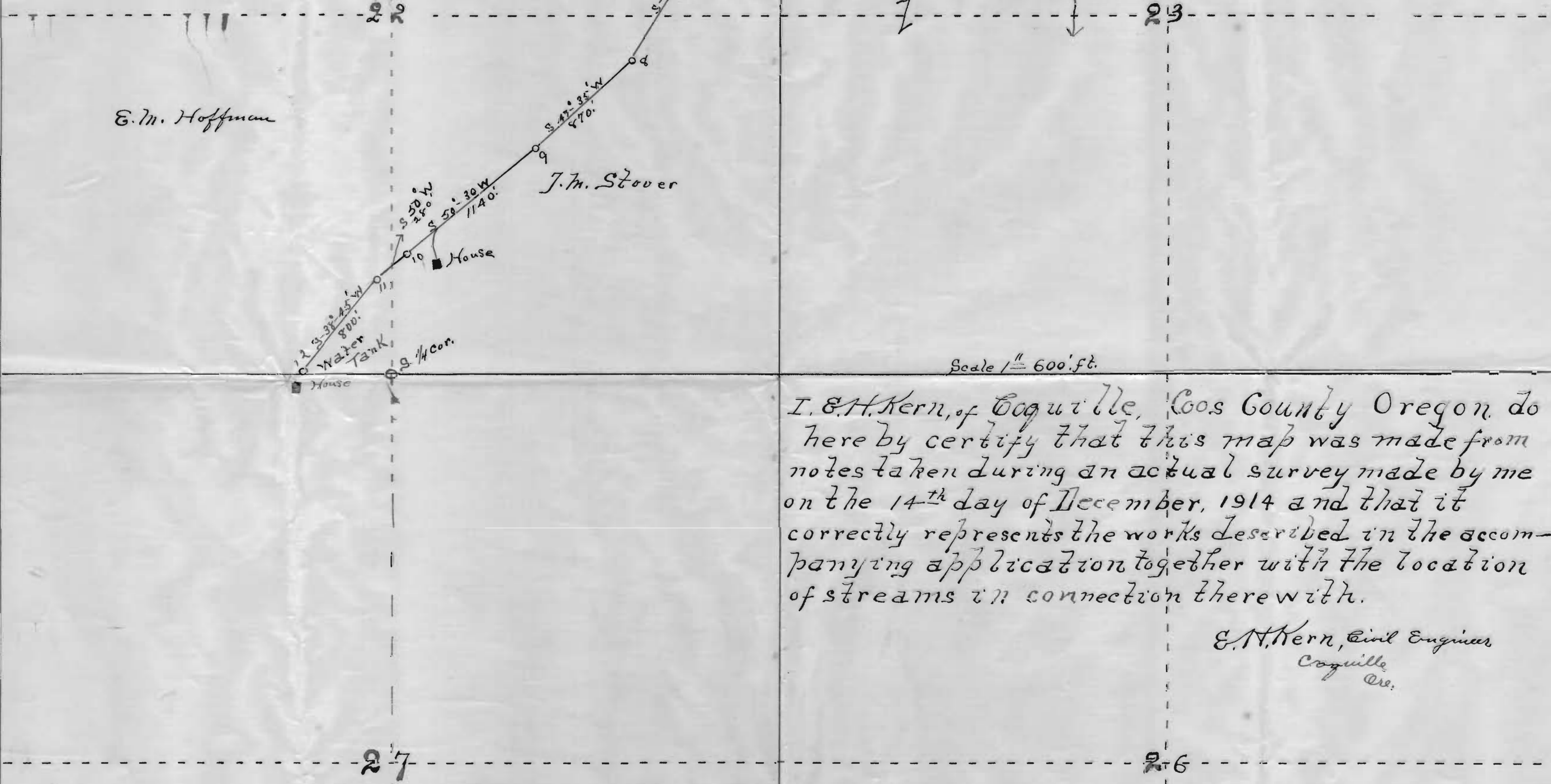


Map of The J. M. Stover Pipe Line
Twp. 29 S. R. 12 W. Willamette Merd.
Coos Co. Ore.

Scale 1" = 600' ft.



Scale 1" = 600' ft.

I, E. H. Kern, of Coquille, Coos County Oregon do here by certify that this map was made from notes taken during an actual survey made by me on the 14th day of December, 1914 and that it correctly represents the works described in the accompanying application together with the location of streams in connection therewith.

E. H. Kern, Civil Engineer
Coquille
Ore.

RECEIVED
JAN 15 1915
SALEM, OREGON.

Application No. 4064
Permit No. 2346

Hopt

Hopt