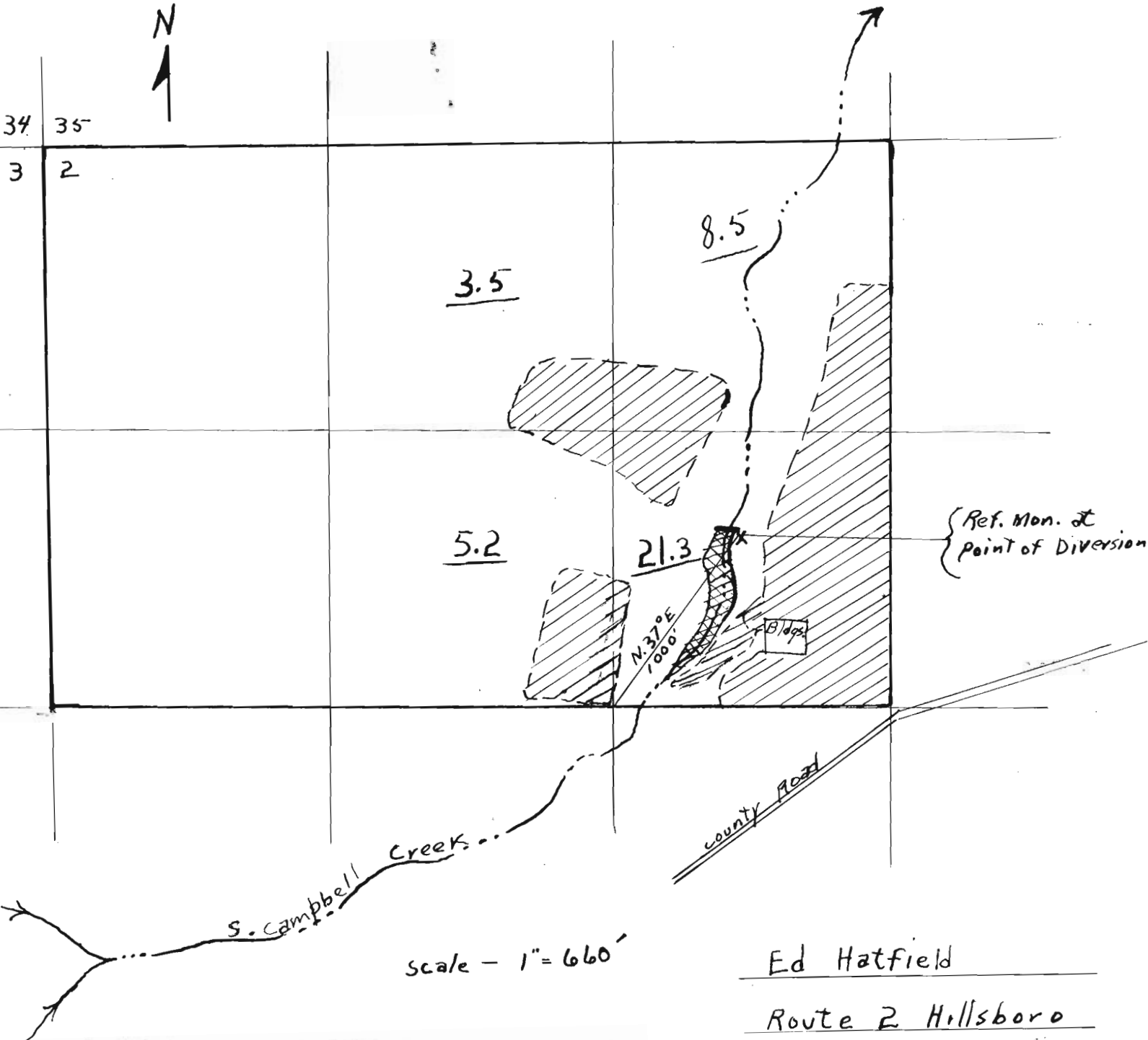




34 35
3 2



scale - 1" = 660'

I, William Coffield of Hillsboro, Ore. do hereby certify that this map was made from notes taken during an actual survey made by me (or under my immediate supervision) on May 12, 1954; that the monument shown on this map consisting of 1" pipe is N 37 degrees E. 1000' from the center of section 2 T 2S R 3W Will. meridian.

William Coffield

Ed Hatfield
Route 2 Hillsboro
sect. 2 - T 2S - R 3W.

RECEIVED
 DEC 8 1954
 STATE ENGINEER

Application No. R-29456
 29457
 Permit No. R-1729
 23487