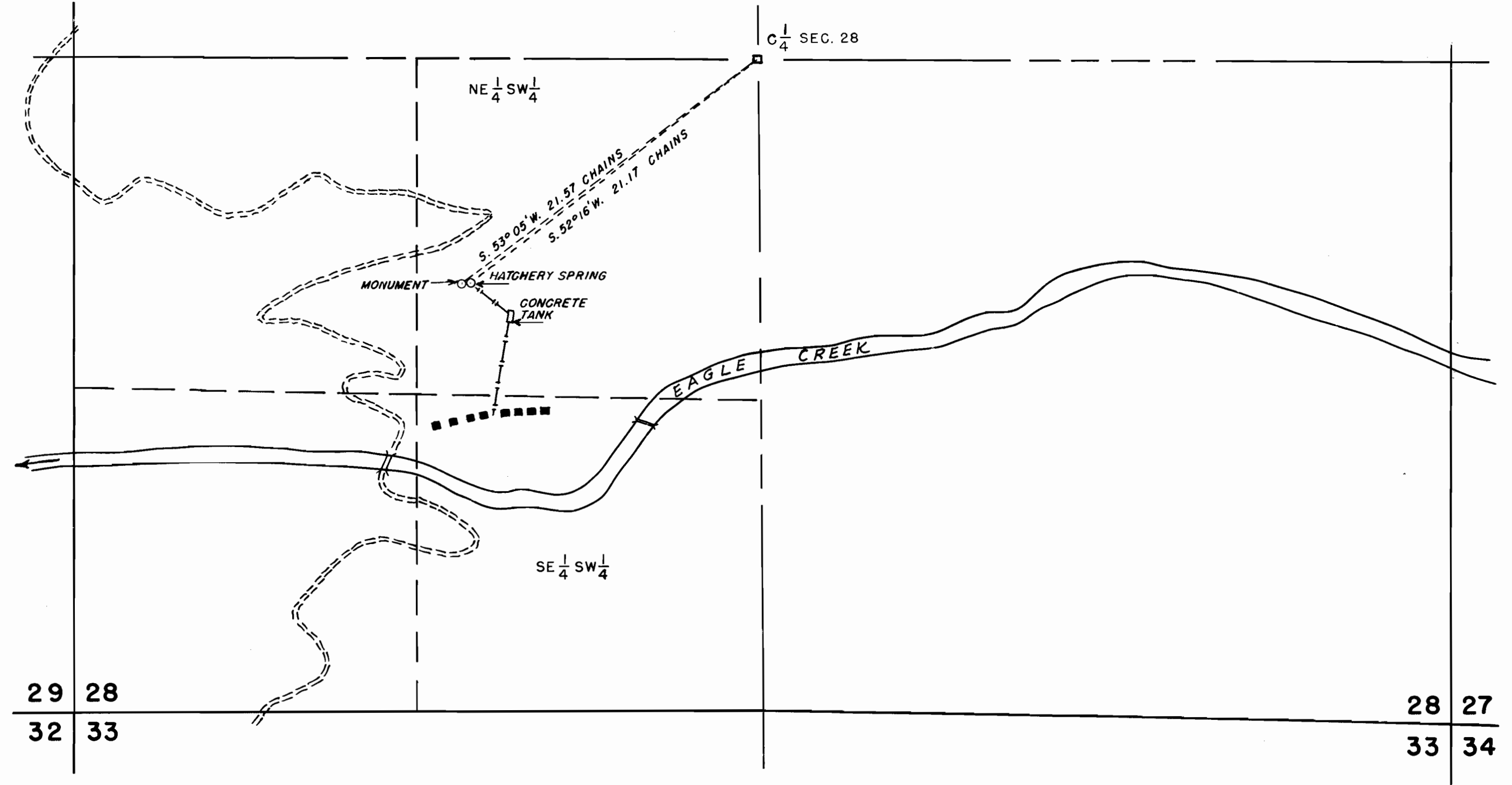




I, GEORGE L. DUCRET, OF THE U.S. DEPT. OF THE INTERIOR, FISH AND WILDLIFE SERVICE, CERTIFY THAT THIS MAP WAS MADE FROM NOTES TAKEN DURING AN ACTUAL SURVEY MADE BY ME (OR UNDER MY IMMEDIATE SUPERVISION) IN 1952 & 1954; THAT THE MONUMENT SHOWN ON THIS MAP CONSISTING OF A 1 1/4" IRON PIPE IS S. 53° 05' W., 21.57 CHAINS FROM THE C. 1/4 CORNER.

George L. Ducret
CIVIL ENGINEER
U.S. DEPARTMENT OF THE INTERIOR

T. 3 S. R. 5 E.



Application No. 29789
Permit No. 23508



WILLAMETTE MERIDIAN

MAP
TO ACCOMPANY APPLICATION TO APPROPRIATE
WATER FROM HATCHERY SPRING
IN THE STATE OF OREGON
BY
THE FISH AND WILDLIFE SERVICE
U.S. DEPARTMENT OF THE INTERIOR