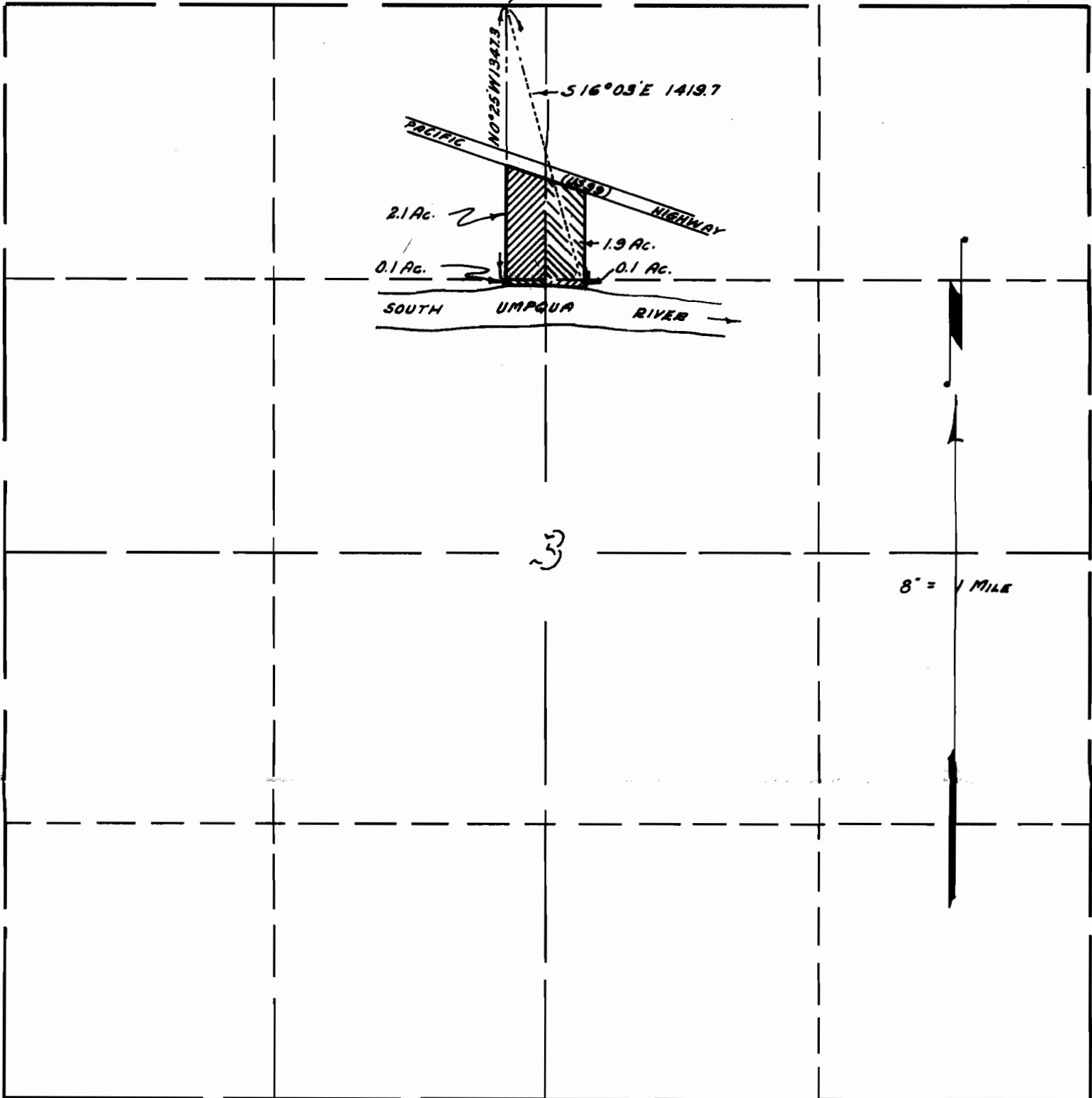


N.E. COR. ROBERT PHIPAS
D.L.C. NO. 37, T29S R6W



3

8" = 1 MILE

NOTE :-
THIS MAP PREPARED FROM DATA FURNISHED
BY THE APPLICANT. NO SURVEY MADE BY
THIS OFFICE.

WATER RIGHT
FOR
GEORGE MERKLING
SECTION 3, T29S, R6W, W.M.

OFFICE OF
BEN B. IRVING
COUNTY SURVEYOR, DOUGLAS COUNTY,
ROSEBURG, OREGON

RECEIVED
MAY 13 1955
STATE ENGINEER
SACRAMENTO, CALIF.

Application No. 29990
Permit No. 28623

29990

4