

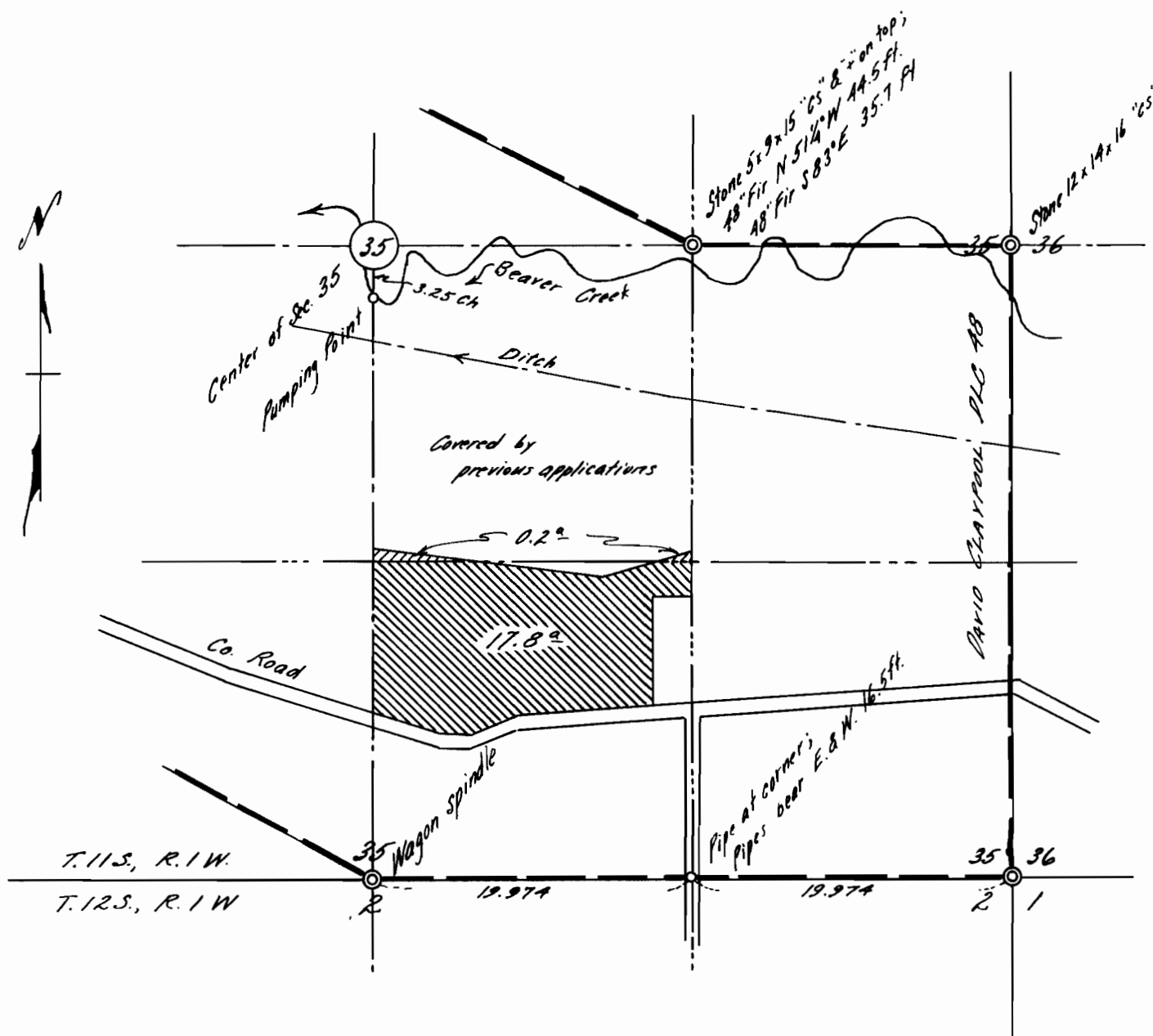
# JONATHAN CROCKETT

SEC. 35, T. 11 S., R. 1 W., W.M.

LINN COUNTY, OREGON

Scale: 1" = 10 Chains

September 27, 1955



I, Orris A. Carnegie of Albany, Oregon do hereby certify that this map was made from notes on record in the office of the Linn County Surveyor and supplemented by information taken from the latest aerial photographs.

REGISTERED  
**OREGON**  
 LAND SURVEYOR

*Orris A. Carnegie*

MAY 9, 1947  
**ORRIS A. CARNEGIE**  
 213