

RECEIVED  
FEB 17 1953  
STATE ENGINEER  
SALEM, OREGON

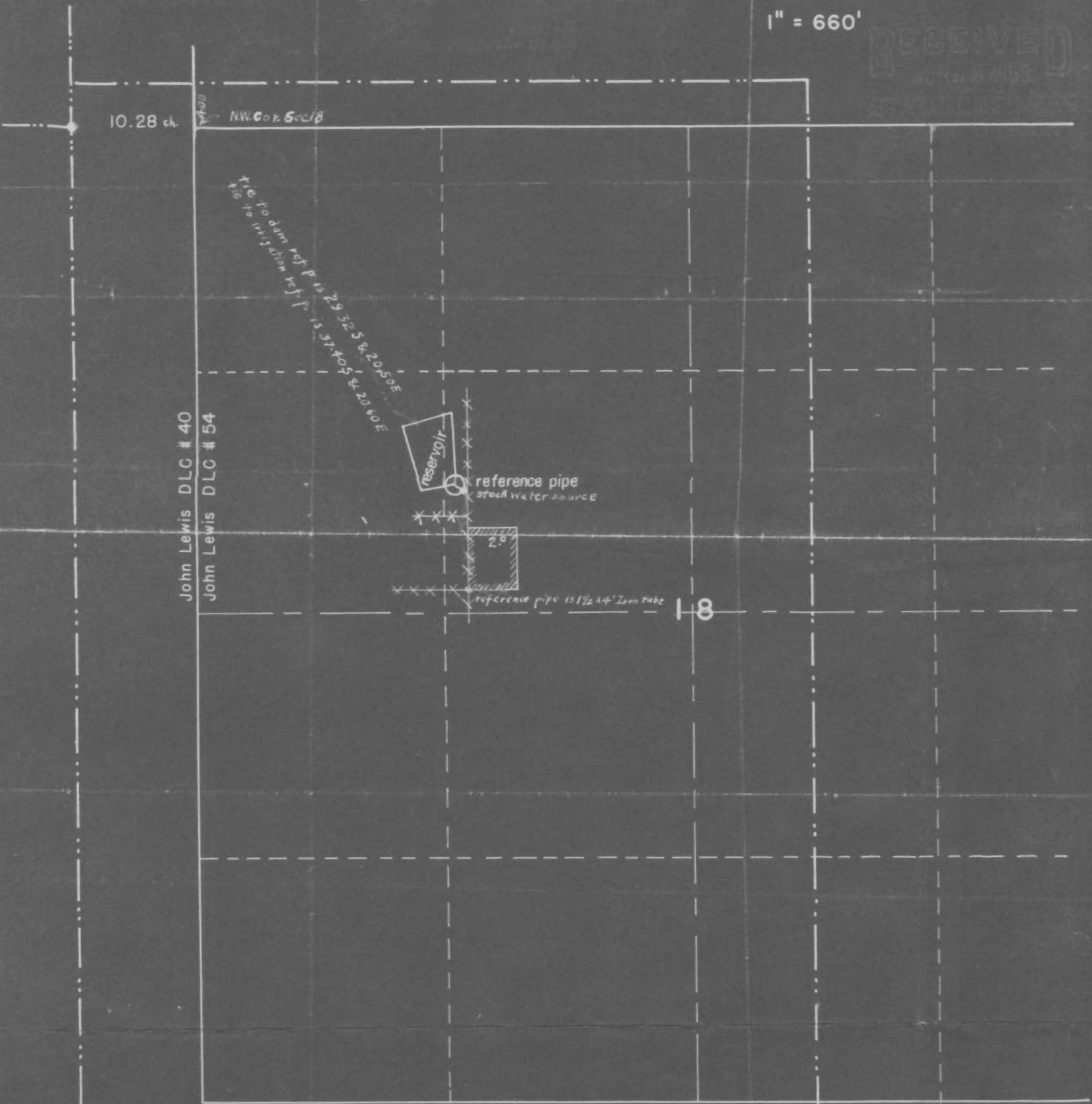
# LEWIS FARM POND #1 STARKER FORESTS

T9S R5W S18

Mapped by  
BRUCE & T. J. STARKER

Fall 1952  
1" = 660'

RECEIVED  
STARKER FORESTS



Application No. R-27745  
28266  
Permit No. R-1515  
22447