

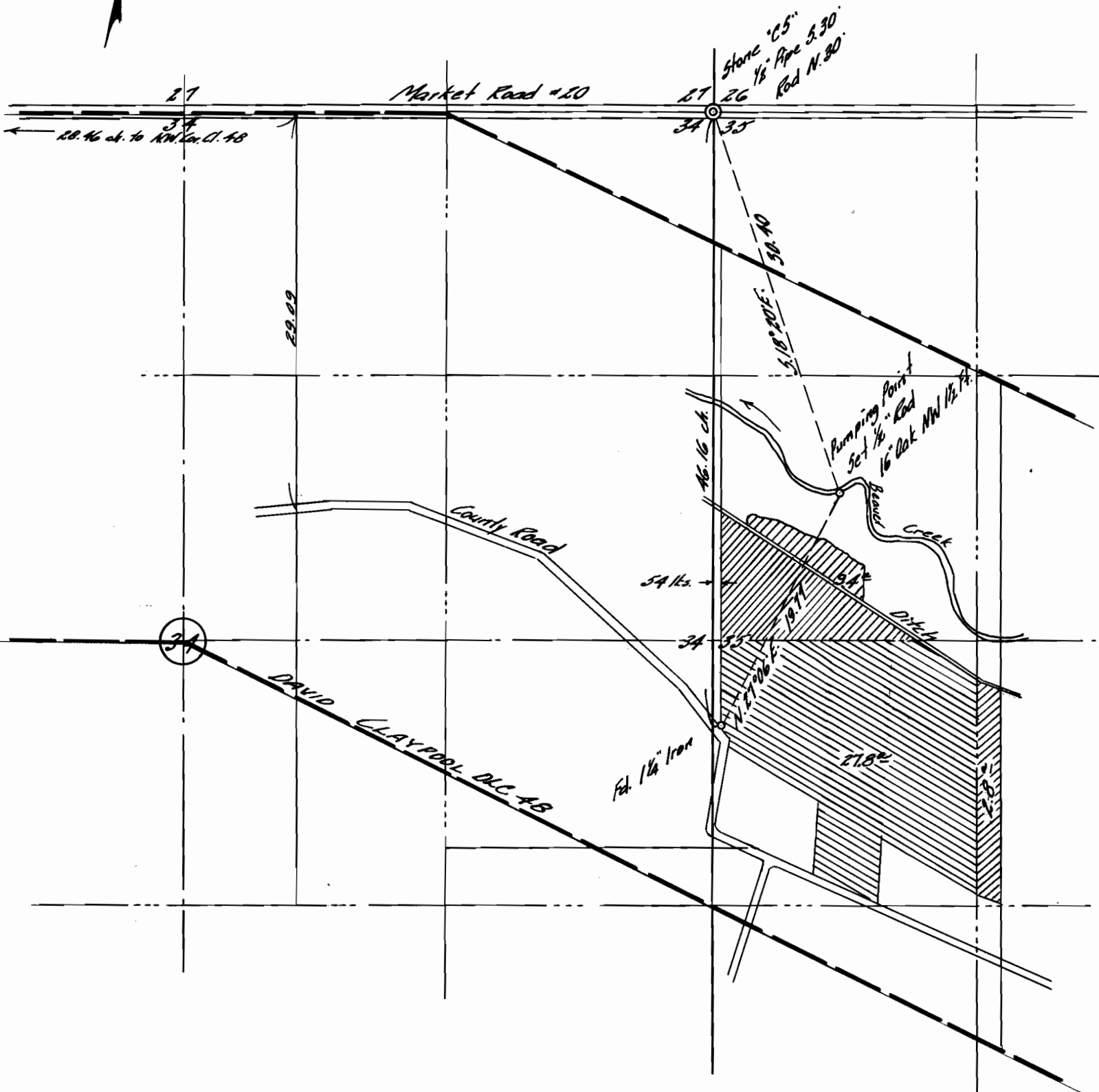
ARTHUR RIEKE IRRIGATION WORKS

SEC. 35, T. 11 S., R. 1 W., W. M.

LINN COUNTY, ORE.

Scale: 1" = 10 Ch.

Dec. 21, 1953



I, Orris A. Carnegie of Albany, Oregon do hereby certify that this map was made from notes taken during an actual survey made under my immediate supervision and supplemented by information taken from the latest aerial photographs on December 21, 1953; that the monument shown on this map consisting of a 1/2" iron rod at the pumping point is S. 18° 20' E. 30.40 chains from the Northwest corner of Section 35, T. 11 S., R. 1 W. of the Mill. Mer. in Linn County, Oregon.

RECEIVED
 CIVIL ENGINEERS

REGISTERED
 OREGON
 LAND SURVEYOR

Orris A. Carnegie

MAY 9, 1947
 ORRIS A. CARNEGIE
 213

28956 30567
 31775 24081