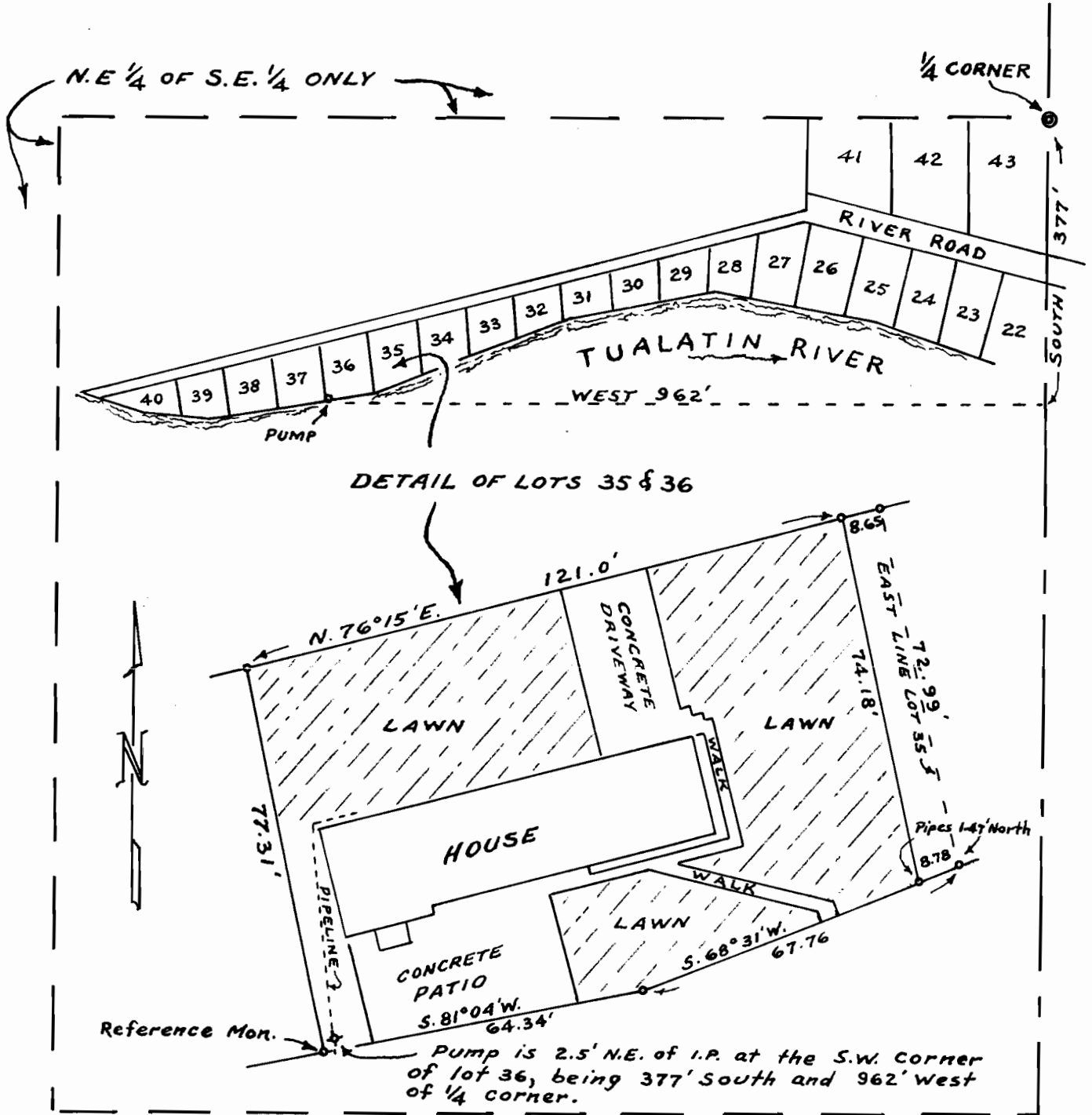


R. L. STRICKLAND TRACT
 LOCATED IN LOTS 35 & 36, MOSSY BRAE,
 WITHIN THE N.E. 1/4 OF THE S.E. 1/4 OF
 SECTION 20, T. 2 S., R. 1 E., W.M.

SCALE 1" = 200'
 DETAIL 1" = 30'



I, Dexter E. Milne, of Oregon City, Oregon, certify that this map was drawn from notes taken during an actual field survey made by me on April 31, 1956. That the original corner marker, a 1" iron pipe, at the S.W. corner of lot 36, MOSSY BRAE, was calculated to be 377' South and 962' West of the 1/4 corner on the east line of section 20, T. 2 S., R. 1 E., W.M., and was used for a reference monument.

Dexter E. Milne
 Registered Surveyor #245

Application No. 30723
 Permit No. 24198