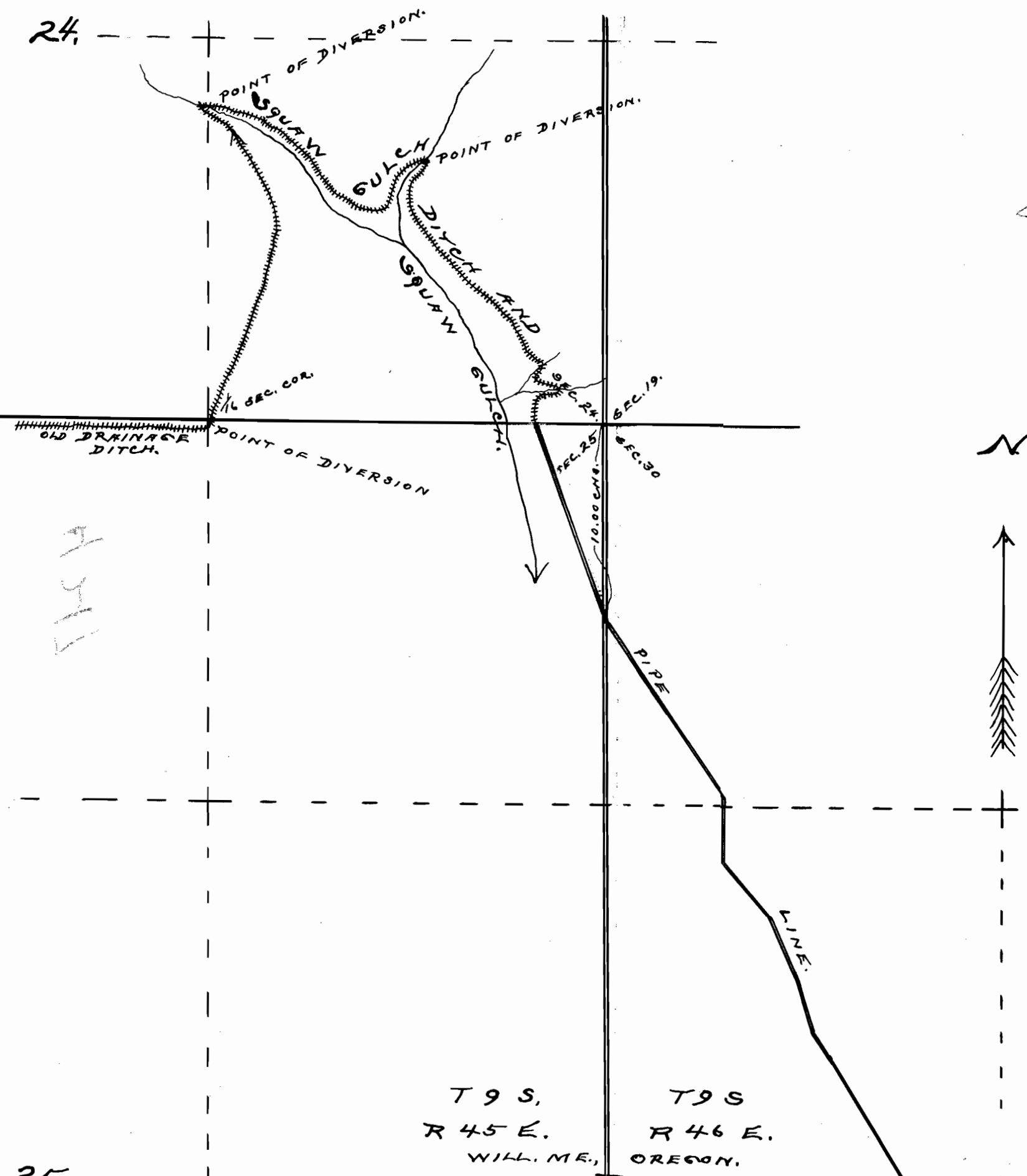


24

FILED

Application No 4217  
Form No 2447.

RECORDED  
JAN 9 1915  
SALEM, OREGON



### SKETCH

SHOWING  
 THE SQUAW GULCH DITCH & PIPE LINE  
 LOCATED IN SECS. 24-25, T9S, R45E + IN  
 SECS. 30+31, T9S, R46E, W. M., ORE., AND LANDS  
 IRRIGABLE WITH WATER CARRIED THEREIN  
 SCALE, ONE INCH = 6.00 CHS.  
 SURVEYED OCT. 27 + 28, 1914

By *Ira L. Hoffman,*  
County Surveyor

### CERTIFICATE OF SURVEYOR.

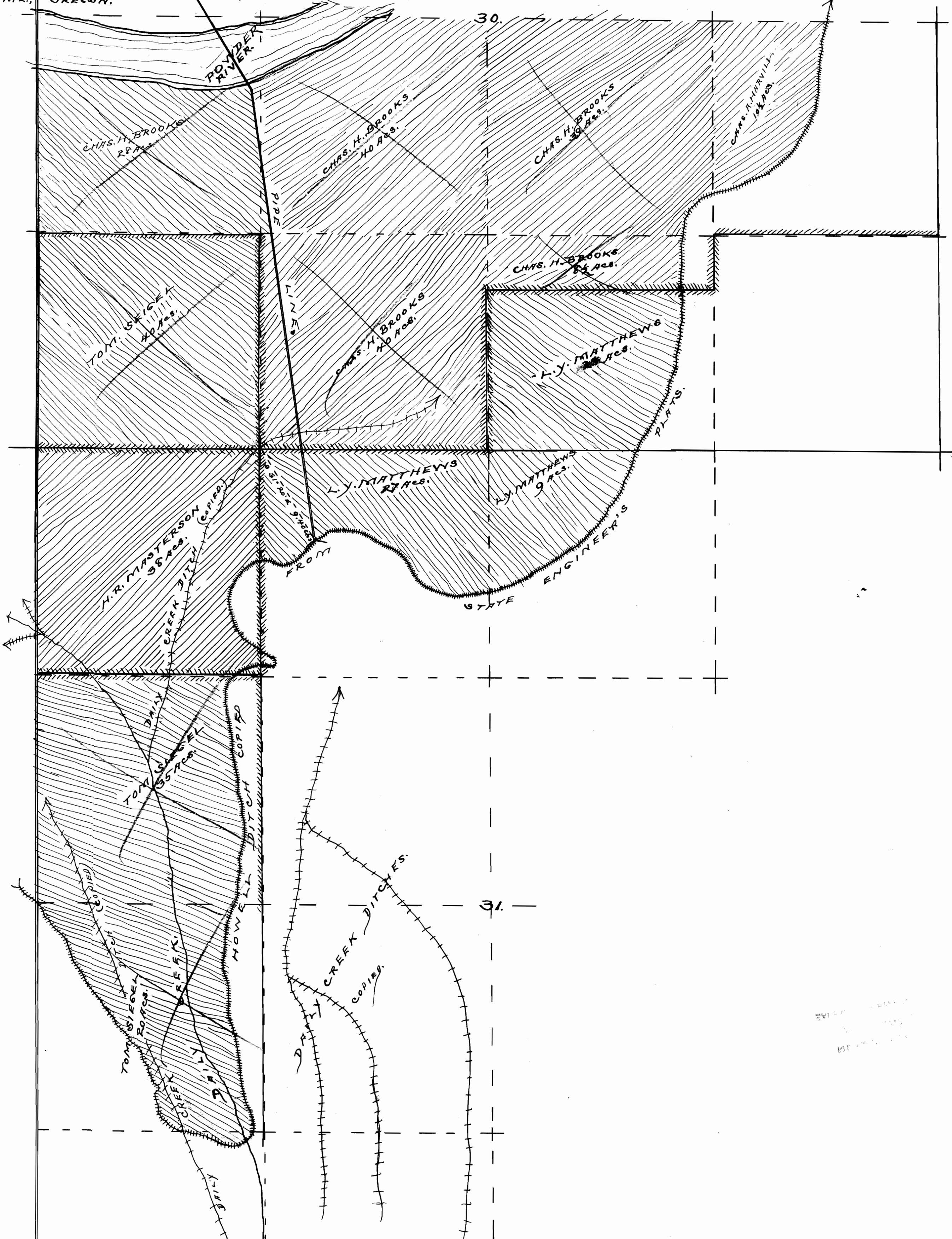
I, IRA L. HOFFMAN, OF BAKER, ORE., DO HEREBY CERTIFY THAT  
 THIS MAP WAS MADE FROM NOTES TAKEN DURING AN ACTUAL SURVEY  
 MADE BY ME ON OCT. 27 + 28, 1914, + FROM DATA TAKEN FROM THE  
 STATE ENGINEER'S WATER ADJUDICATION MAP, AND THAT IT COR-  
 RECTLY REPRESENTS THE WORKS SHOWN THEREON, TOGETHER WITH THE  
 LOCATION OF STREAMS + OTHER DITCHES IN THE IMMEDIATE VICINITY,  
 AND HAS WRITTEN THEREON THE AREA IN EACH LEGAL SUBDIVIS-  
 ION WHICH IT IS PROPOSED TO IRRIGATE.

*Ira L. Hoffman,*  
County Surveyor.

T9S, R45E.  
WILL. ME., OREGON.

T9S, R46E.  
WILL. ME., OREGON.

25



FILED

FILED

RECORDED  
JAN 9 1915  
SALEM, OREGON