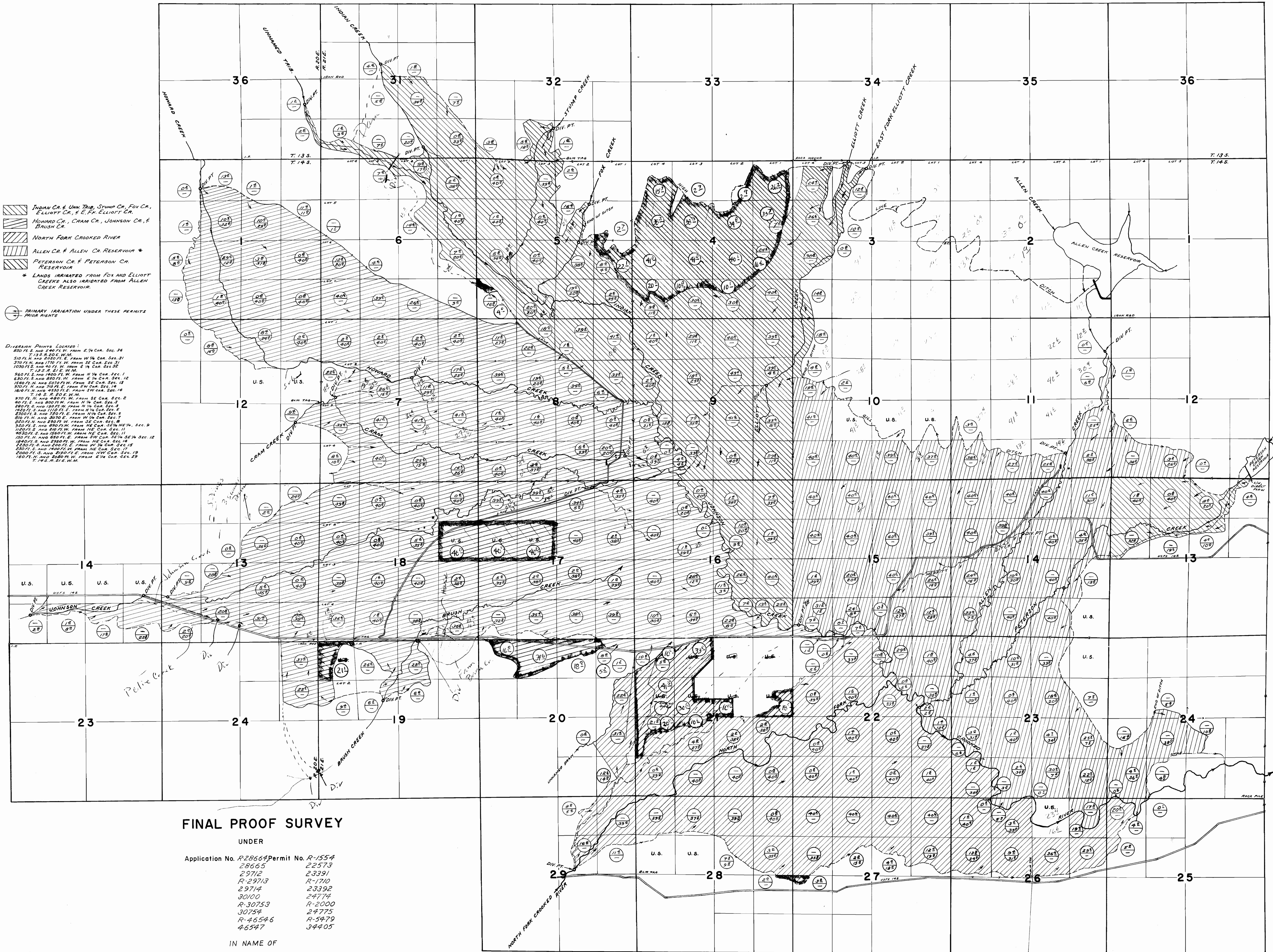




WATER RIGHT MAP
 SUMMIT PRAIRIE PROJECT
 HODDGETH LAND & LIVESTOCK CO-OWNER
 SCALE: 4" = 1 MILE
 Engineering by Fred D. Gustafson
 Emil P. Bachman



- INDIAN CR. & UNIV. TRIG. STUMP CR., FOX CR., ELLIOTT CR., & E. F. ELLIOTT CR.
- HOWARD CR., CRAM CR., JOHNSON CR., & BRUSH CR.
- NORTH FORK CROOKED RIVER
- ALLEN CR. & ALLEN CR. RESERVOIR *
- PETERSON CR. & PETERSON CR. RESERVOIR
- * LANDS IRRIGATED FROM FOX AND ELLIOTT CREEKS ALSO IRRIGATED FROM ALLEN CREEK RESERVOIR.
- PRIMARY IRRIGATION UNDER THESE PERMITS UNDER RIGHTS

DIVERSION POINTS LOCATED:
 150 FT. E. AND 250 FT. W. FROM COR. SEC. 36
 T. 13 S. R. 20 E. W. M.
 370 FT. N. AND 170 FT. W. FROM SE COR. SEC. 31
 1000 FT. E. AND 40 FT. W. FROM E. 1/4 COR. SEC. 32
 1/4 S. R. 21 E. W. M.
 360 FT. S. AND 180 FT. W. FROM N/4 COR. SEC. 1
 630 FT. S. AND 80 FT. W. FROM E. 1/4 COR. SEC. 1
 150 FT. W. AND 150 FT. W. FROM SE COR. SEC. 1
 300 FT. E. AND 180 FT. E. FROM N/4 COR. SEC. 2
 360 FT. S. AND 180 FT. W. FROM SE COR. SEC. 8
 360 FT. S. AND 180 FT. W. FROM NE COR. SEC. 9
 360 FT. S. AND 180 FT. W. FROM SE COR. SEC. 11
 100 FT. E. AND 180 FT. E. FROM SW COR. SEC. 12
 180 FT. S. AND 180 FT. W. FROM NE COR. SEC. 12
 180 FT. S. AND 180 FT. W. FROM SE COR. SEC. 12
 180 FT. S. AND 180 FT. W. FROM SW COR. SEC. 12
 180 FT. S. AND 180 FT. W. FROM SW COR. SEC. 12
 180 FT. S. AND 180 FT. W. FROM SW COR. SEC. 12
 180 FT. S. AND 180 FT. W. FROM SW COR. SEC. 12

FINAL PROOF SURVEY

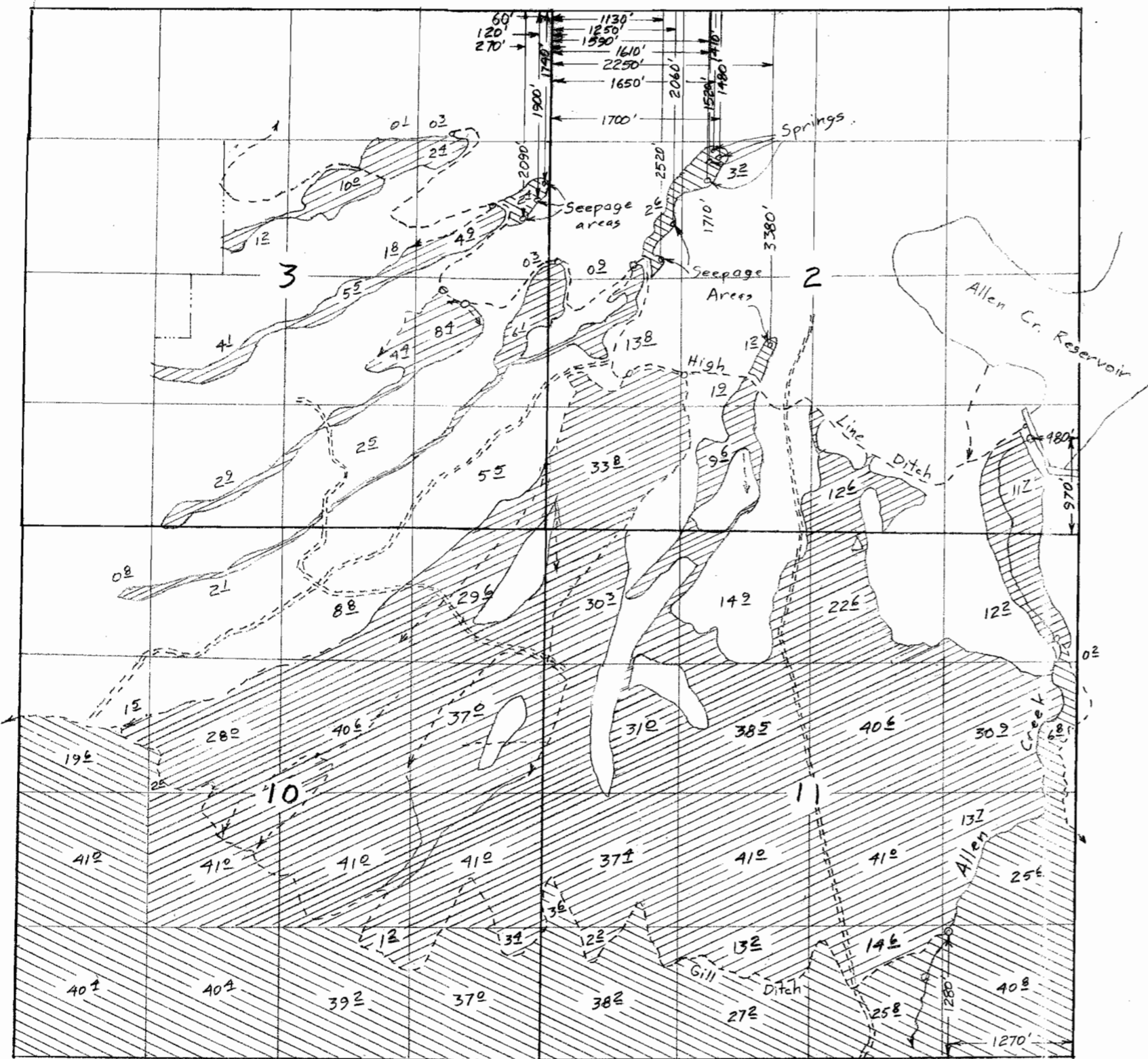
UNDER
 Application No. R-28664 Permit No. R-1554
 28665 22573
 29712 23391
 R-29713 R-1710
 29714 23392
 30100 24774
 R-30753 R-2000
 30754 24775
 R-46546 R-5979
 46547 34405

IN NAME OF
BOSTON RANCH COMPANY

RECEIVED
 SEP 13 2006
 WATER RESOURCES DEPT
 SALEM, OREGON

SURVEYED JUN. 22 THRU JUL. 3, 1930 BY D. BULL
 CHECKED OCT. 1938 BY L. E. COULB
 JUNE 1963 BY T. LAUER
 JAN. 1965 BY R. JOHNSON

TOWNSHIP 14 SOUTH, RANGE 21 EAST, W.M.



Claim of Beneficial Use Map
for
Les Schwab Tire Centers of Oregon
(LS Ranch portion of Allen Creek
and Springs/Seepage Areas under
application 30100, permit 24774)

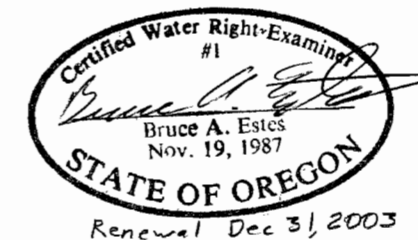
- ⊗ Allen Creek (1193⁶ acres)
- ⊗ Springs/Seepage Areas (9⁴ acres)

Scale 1"=1320'

RECEIVED

JUN 01 2005

WATER RESOURCES DEPT
SALEM, OREGON



Surveyed August 14 & September 9 & 10, 2003

This map is for the purpose of
locating a water right only
and has no intent to provide
legal dimensions or the location
of property lines.

ESTES SURVEYS, LLC

PO Box 17519 60382 Arnold Rd
Salem, OR 97305-7519 Bend, OR 97702
(503) 585-7593 (541) 382-7391

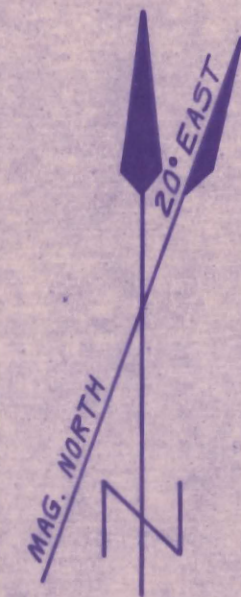
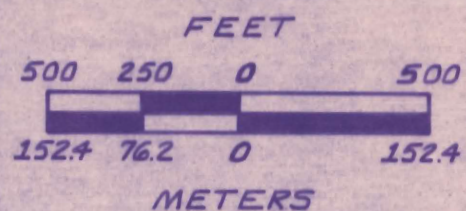
Amended 28 May 05

**OCHOCO NATIONAL FOREST
PASTURE CADASTRAL SURVEY**

CONTRACT NO. 53-04NO-2-00062
BIG SUMMIT RANGER DISTRICT

SUBDIVISION OF SECTION 32,
TOWNSHIP 14 SOUTH, RANGE 21 EAST, W.M.,
CROOK COUNTY, OREGON
W.O. 82-366

SCALE



LEGEND

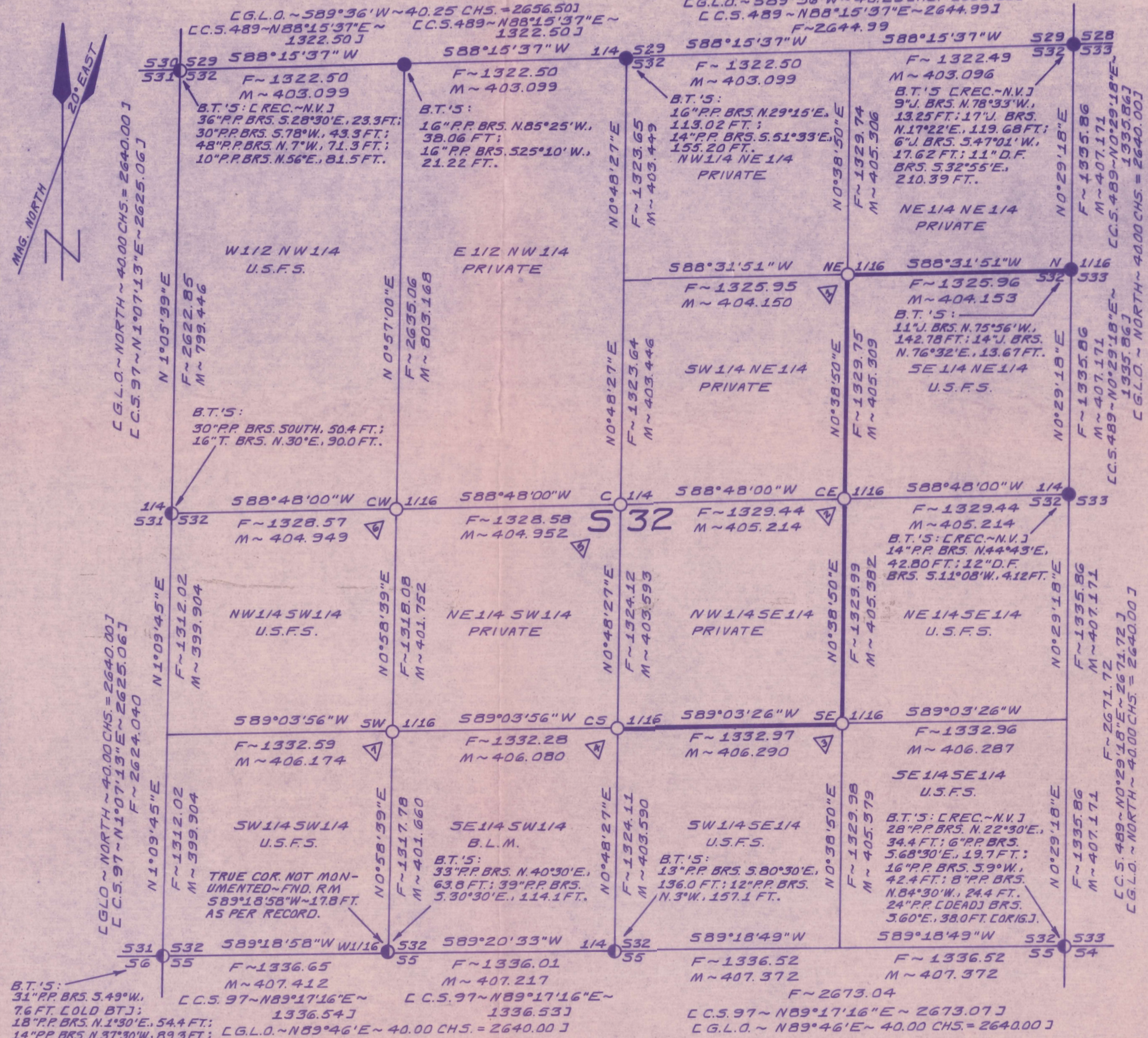
- FOUND 2 1/2" ALUMINUM PIPE WITH 3 1/4" ALUMINUM CAP SET BY DAVID B. ARMSTRONG, L.S. 1026, AS PER CERTIFIED RECORD OF LAND CORNER MONUMENTATION FILED WITH CROOK COUNTY SURVEYOR IN 1978 C.C.S. 489 J.
- FOUND 2 1/2" ALUMINUM PIPE WITH 3 1/4" ALUMINUM CAP SET BY DOUGLAS M. FERGUSON, L.S. 848, AS PER CERTIFIED RECORD OF LAND CORNER MONUMENTATION FILED WITH CROOK COUNTY SURVEYOR IN 1978 C.C.S. 97 J.
- SET 2 1/2" ALUMINUM PIPE WITH 3 1/4" ALUMINUM CAP DURING THIS SURVEY, A CERTIFIED RECORD OF LAND CORNER MONUMENTATION WILL BE FILED CONCURRENTLY WITH THIS MAP WITH CROOK COUNTY SURVEYOR.
- INDICATES U.S.F.S. PROPERTY BOUNDARY POSTED UNDER THIS CONTRACT WITH 6 FOOT STEEL FENCE POSTS WITH U.S.F.S. PROPERTY BOUNDARY SIGNS ATTACHED.
- G.L.O. GENERAL LAND OFFICE. L.P. LODGEPOLE PINE
- △ CORNER MONUMENT NOTE NUMBER. T. TAMARACK
- △ JUNIPER P.P. PONDEROSA PINE D.F. DOUGLAS FIR
- [CREC-N.V.] RECORD ACCESSORIES-NOT VISITED THIS SURVEY

GENERAL SURVEY NOTES

1. EQUIVALENT DISTANCE IN METERS FOR SURVEYED LINES OBTAINED BY MULTIPLYING DISTANCE IN FEET BY CONVERSION FACTOR OF 1200 ÷ 3937 OR ONE SURVEY FOOT EQUALS 0.3048006096 METERS.
2. SURVEY FIELD NOTES ARE ON FILE IN THE OFFICE OF ARMSTRONG SURVEYING & ENGINEERING, INC., 378 EAST SECOND STREET, PRINEVILLE, OREGON-ONE BOOK.
3. BEARINGS FOR THIS SURVEY ARE BASED ON RECORDED BEARINGS FOR EAST AND NORTH LINES OF SECTION 32 AS PER COUNTY SURVEY NO. 489 RECORDED NOVEMBER 13, 1978, BY DAVID B. ARMSTRONG, L.S. 1026, OF ARMSTRONG SURVEYING & ENGINEERING, INC..
4. C.S. 97 RECORD-FROM COUNTY SURVEY NO. 97 RECORDED DECEMBER 19, 1978, BY DOUGLAS M. FERGUSON, L.S. 848, OF OREGON EAST ENGINEERING, INC..
5. GENERAL LAND OFFICE RECORD FOR ALL LINES FROM OFFICIAL NOTES AND PLAT BY JEREMIAH M. DICK PERFORMED UNDER G.L.O. CONTRACT NO. 195 DATED JULY 2, 1873.

CORNER MONUMENTATION-ACCESSORIES

- △ SET MON. 16" IN GRND. WJ 3 FT. STONE MOUND. A 6" JUNIPER BR. 5.31° E., 70.1 FT. SCRIBED-NE 1/16 S 32 BT. A 10" PONDEROSA PINE BR. 5.48 1/2° W., 46.4 FT. SCRIBED-NE 1/16 S 32 BT.
- △ SET MON. 28" IN GRND. A 21" PONDEROSA PINE BR. N. 24 1/2° E., 233.6 FT. SCRIBED-CE 1/16 S 32 BT. A 6" JUNIPER BR. 5.56° E., 177.5 FT. SCRIBED-CE 1/16 S 32 BT.
- △ SET MON. 26" IN GRND. WJ 2 FT. STONE MOUND. A 5" JUNIPER BR. 5.86 1/2° E., 57.6 FT. SCRIBED-SE 1/16 S 32 BT. A 9" LODGEPOLE PINE BR. 5.42 1/2° W., 38.1 FT. SCRIBED-SE 1/16 S 32 BT.
- △ SET MON. 25" IN GRND. A 14" LODGEPOLE PINE BR. N. 52° E., 216.1 FT. SCRIBED-CS 1/16 S 32 BT. A 22" PONDEROSA PINE BR. 5.62 1/2° E., 92.3 FT. SCRIBED-CS 1/16 S 32 BT.
- △ SET MON. 20" IN GRND. WJ 2 FT. STONE MOUND. A 13" PONDEROSA PINE BR. 5.16° W., 243.5 FT. SCRIBED-C 1/4 S 32 BT. A 1" DIA. X 24" LONG IRON ROD BR. 5.78 1/2° E., 14.51 FT. MARKED-RM-532.
- △ SET MON. 24" IN GRND. WJ 2 FT. STONE MOUND. A 4" DBL. JUNIPER BR. NORTH, 172.3 FT. SCRIBED-CW 1/16 S 32 BT. A 6" PONDEROSA PINE BR. 5.46 1/2° W., 99.0 FT. SCRIBED-CW 1/16 S 32 BT.
- △ SET MON. 25" IN GRND. WJ 2 FT. STONE MOUND. AN 11" PONDEROSA PINE BEARS N. 1° E., 172.4 FT. SCRIBED-SW 1/16 S 32 BT. AN 8" PONDEROSA PINE BR. 5.65° W., 169.4 FT. SCRIBED-SW 1/16 S 32 BT.
- △ BEARING TREES HAVE BRASS WASHER STAMPED "A.S.*E. L.S. 1026" NAILED IN LOWER BLAZE. BEARINGS BY STAFF COMPASS-MAGNETIC VARIATION 20° EAST.



I, DAVID B. ARMSTRONG, A REGISTERED PROFESSIONAL LAND SURVEYOR IN THE STATE OF OREGON, HEREBY CERTIFY THAT THIS PLAT AND/OR NOTES ARE A CORRECT REPRESENTATION OF A SURVEY PERFORMED DURING NOVEMBER, 1982, AT THE REQUEST OF THE U.S.D.A., FOREST SERVICE, IN ACCORDANCE WITH STATUTES OF THE STATE OF OREGON AND ARTICLES OF CONTRACT NO. 53-04NO-2-00062.

REGISTERED PROFESSIONAL LAND SURVEYOR
David B. Armstrong
12/6/82
DAVID B. ARMSTRONG
1026

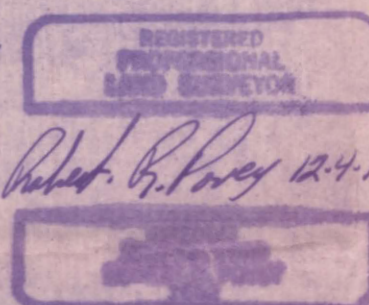
STATE OF OREGON,
COUNTY OF CROOK,
I CERTIFY that the within instrument of writing was received for record on the 7TH day of DEC. A.D. 1982, and recorded in Surveys # 762 of said County.
David B. Armstrong
County Surveyor

**OCHOCO NATIONAL FOREST
CADASTRAL SURVEY
CONTRACT NO. 53-04H1-0-8133N
YELLOWLINE PROJECT
YELLOWJACKET AREA**

B16 SUMMIT RANGER DISTRICT
NORTH AND EAST LINES OF SECTION 1 AND
EAST LINES OF SECTIONS 12 AND 13
T. 14 S., R. 21 E. W. M. CROOK COUNTY, OREGON

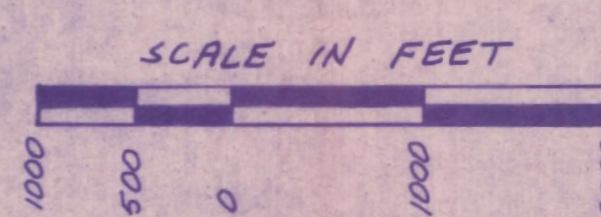
SURVEYOR'S CERTIFICATE

I, ROBERT R. POVEY, OREGON REGISTERED PROFESSIONAL LAND SURVEYOR NO. 1652, HEREBY CERTIFY THAT THIS PLAT AND THE NOTES HEREON ARE A CORRECT REPRESENTATION OF A SURVEY I PERFORMED DURING SEPT. OCT. AND NOV. OF 1980 FOR THE U.S. FOREST SERVICE IN ACCORDANCE WITH THE STATUTES OF THE STATE OF OREGON AND WITH THE ARTICLES OF CONTRACT NO. 53-04H1-0-8133N WITH POVEY AND ASSOC. LAND SURVEYORS, REDMOND, OREGON.



LEGEND

- - MONUMENT FOUND AS PER RECORD, ORIGINAL CORNER LOCATION REMONUMENTED UNDER PREVIOUS U.S. FOREST SERVICE CONTRACTS. U.S.F.S. FORM R6-7100-57, RECORD OF CORNER MONUMENTATION, ON FILE WITH CROOK COUNTY SURVEYOR.
- ⊙ - MONUMENT SET UNDER THIS CONTRACT - ORIGINAL CORNER LOCATION REMONUMENTED. U.S.F.S. FORM R6-7100-57, RECORD OF CORNER MONUMENTATION, TO BE FILED CONCURRENTLY WITH THIS MAP, WITH CROOK COUNTY SURVEYOR.
- - MONUMENT SET UNDER THIS CONTRACT - ORIGINAL GENERAL LAND OFFICE CORNER LOST. U.S.F.S. FORM R6-7100-57, RECORD OF CORNER MONUMENTATION, TO BE FILED CONCURRENTLY WITH THIS MAP, WITH CROOK COUNTY SURVEYOR.
- BOUNDARY LINE POSTED UNDER THIS CONTRACT.
- P.P. - PONDEROSA PINE
- J. - JUNIPER
- G.L.O. RECORD



GENERAL NOTES

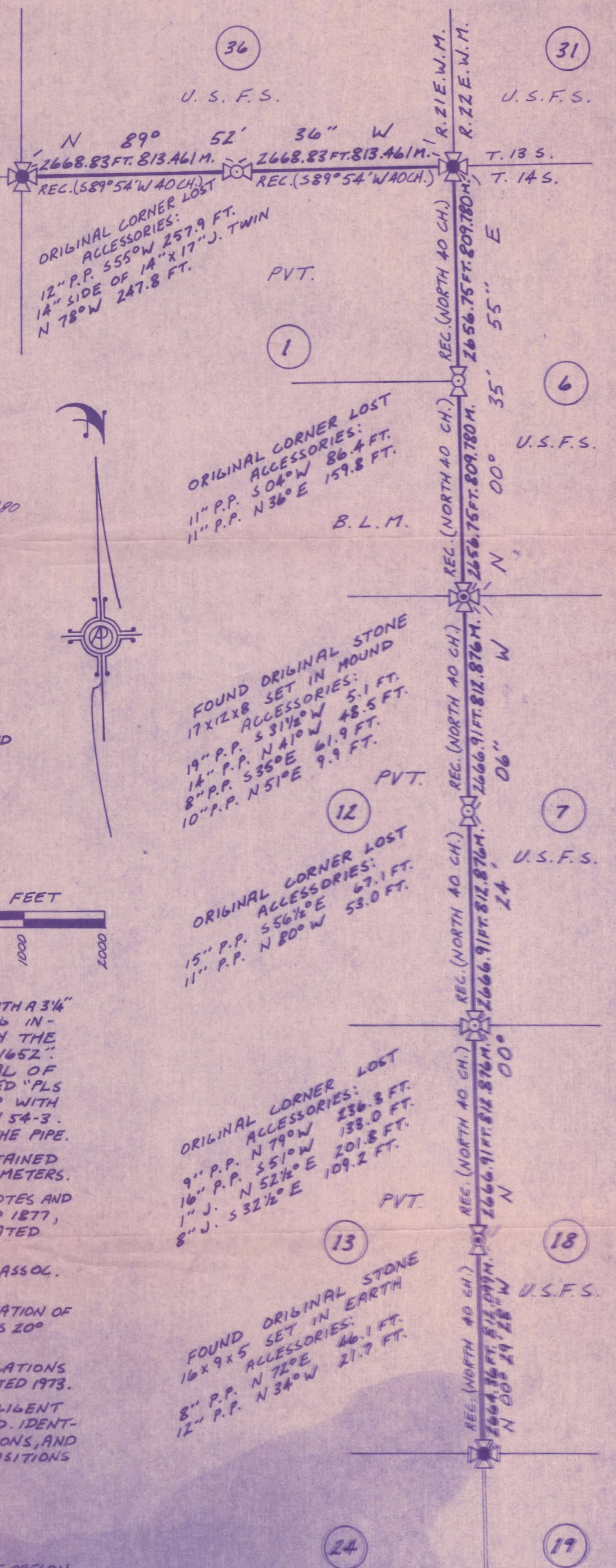
- ALL MONUMENTS SET ARE 2 1/2" O.D. ALUMINUM PIPE 30" LONG WITH A 3/4" ALUMINUM CAP MARKED AS PER THE B.L.M. MANUAL OF SURVEYING INSTRUCTIONS, 1973. ALL MONUMENTS ARE FURTHER MARKED WITH THE DATE, "1980", AND THE LAND SURVEYOR LICENSE NUMBER "PLS 1652". ALL BEARING TREES ARE MARKED AS PER THE B.L.M. MANUAL OF SURVEYING INSTRUCTIONS, 1973, WITH A BRASS WASHER MARKED "PLS 1652" SET IN THE LOWER BLAZE. ALL BEARING TREES ARE MARKED WITH A RED PAINT BAND AND COMPLETED U.S.F.S. BEARING TREE SIGN 54-3. ALL MONUMENTS HAVE A STONE AND EARTH MOUND AROUND THE PIPE.
- EQUIVALENT DISTANCE IN METERS FOR SURVEYED LINES OBTAINED BY USING CONVERSION FACTOR OF 1 FOOT EQUALS 0.3048006096 METERS.
- GENERAL LAND OFFICE RECORD FOR ALL LINES FROM OFFICIAL NOTES AND PLATS BY E. A. THATCHER UNDER G.L.O. CONTRACT NO. 268, DATED 1877, AND BY JEREMIAH M. DICK UNDER G.L.O. CONTRACT NO. 195, DATED JULY 2, 1873.
- ORIGINAL FIELD NOTES ARE ON FILE IN THE OFFICE OF POVEY AND ASSOC. LAND SURVEYORS, REDMOND, OREGON.
- THE BASIS OF BEARINGS WAS DETERMINED BY ALTITUDE OBSERVATION OF THE SUN. THE MEAN MAGNETIC DECLINATION OF THE PROJECT AREA IS 20° EAST OF NORTH.
- THIS SURVEY WAS EXECUTED IN ACCORDANCE WITH THE SPECIFICATIONS AS SET FORTH IN THE MANUAL OF SURVEYING INSTRUCTIONS, DATED 1973.
- ALL LINES IN THE ORIGINAL SURVEY WERE RETRACED AND A DILIGENT SEARCH MADE FOR ALL CORNERS AND OTHER CALLS OF RECORD. IDENTIFIED CORNERS WERE REMONUMENTED IN THEIR ORIGINAL POSITIONS, AND LOST CORNERS WERE RE-ESTABLISHED AT PROPORTIONATE POSITIONS BASED ON ORIGINAL RECORD.

OFFICE OF THE COUNTY SURVEYOR, COUNTY OF CROOK, STATE OF OREGON
I HEREBY CERTIFY THAT THE WITHIN INSTRUMENT WAS FILED IN THIS OFFICE ON THIS 22 DAY OF DECEMBER 1980.

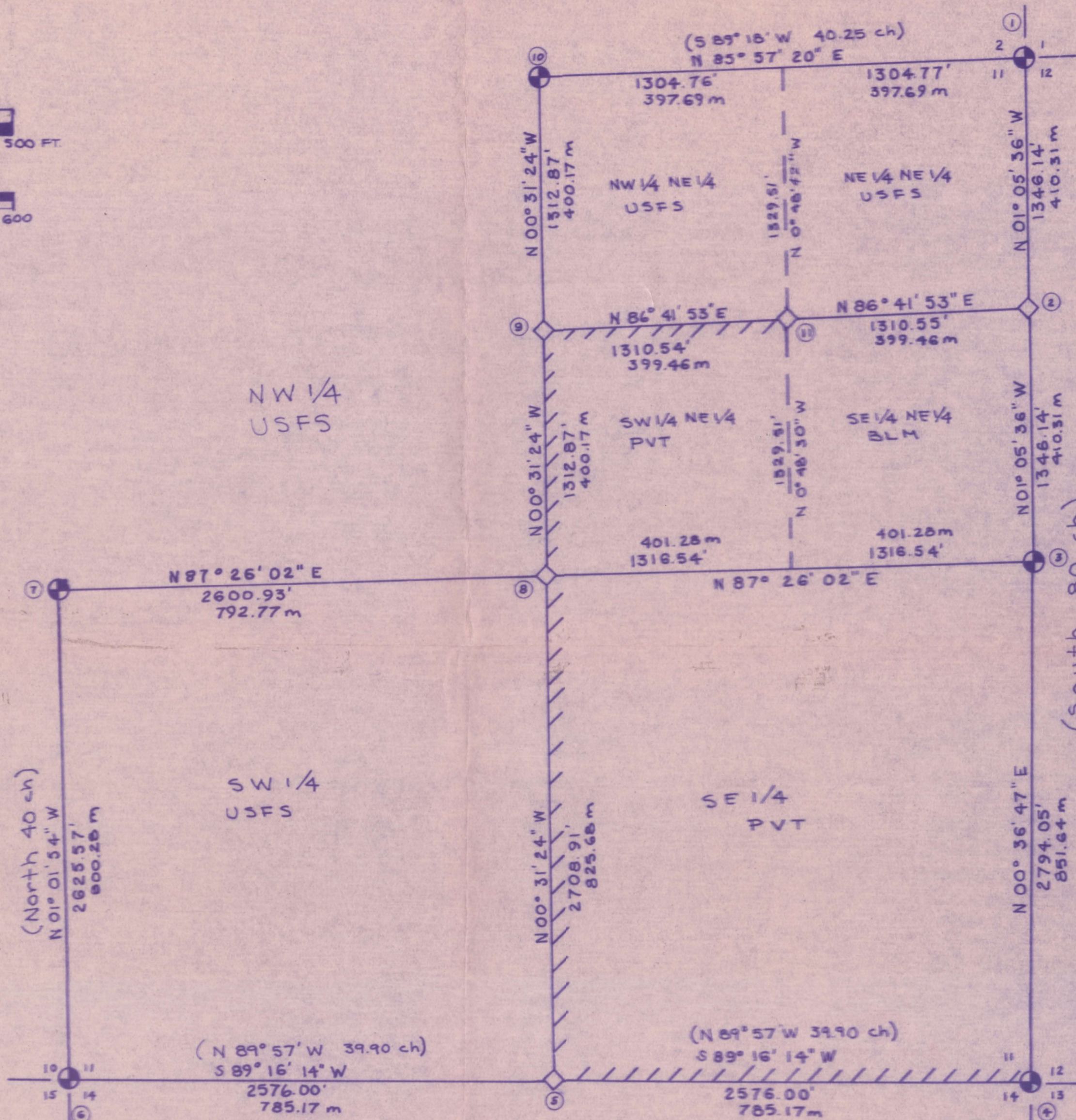
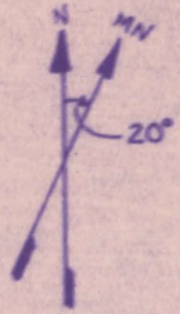
Robert R. Povey
CROOK COUNTY SURVEYOR

POVEY AND ASSOCIATES
LAND SURVEYORS
REDMOND, OREGON
DECEMBER 22, 1980

STATE OF OREGON
COUNTY OF CROOK
I CERTIFY that the within instrument of writing was recorded in my office on the 22nd day of DEC 1980 and recorded in Survey 658-A of said County.
David L. Armstrong
County Surveyor



RECORD OF SURVEY OF SECTION 11, T14 S, R20E, W.M.



"I, JOHN JOYCE, A REGISTERED LAND SURVEYOR IN THE STATE OF OREGON, HEREBY CERTIFY THAT THIS PLAT AND THE NOTES HEREON, OR ATTACHED, ARE A CORRECT REPRESENTATION OF A SURVEY I PERFORMED DURING SEPTEMBER 1981, FOR THE U.S. FOREST SERVICE, IN ACCORDANCE WITH THE STATUTES OF THE STATE OF OREGON AND WITH THE ARTICLES OF MY CONTRACT."

John M. Joyce
 JOHN M. JOYCE
 REGISTERED LAND SURVEYOR
 OREGON LICENSE #1228



- ① CORNER COMMON TO SECTIONS 12, 11 & 12
 FOUND 3" ALUMINUM CAP IN ROCK MOUND. STAMPED USFS 1977, OLS 1061
 BT'S FOUND
 30" PINE - S85°09'W, 38.09 FT.
 W/ OLD SCRIBING
 36" PINE - N84°26'N, 44.13 FT.
 W/ OLD SCRIBING
 30" PINE - S60°32'E, 55.32 FT.
 W/ HEALED BLAZE
 18" PINE - S24°26'E, 47.60 FT.
 SCRIBED T145 R20E S12 BT
 12" PINE - N86°15'E, 106.12 FT.
 SCRIBED T145 R20E S1
- ② NORTH 1/16 CORNER BETWEEN SECTION 11 & SECTION 12
 NOTHING FOUND
 SET 2 1/2" X 30" ALUMINUM PIPE WITH 3/4" ALUMINUM CAP. STAMPED USFS OLS 1228, 1981
 ACCESSORIES SET
 1" X 24" IRON ROD - N76°52'E, 10.00 FT.
 STAMPED R.M., S11, LS 1228
 1" X 24" IRON ROD - S78°17'W, 9.96 FT.
 STAMPED R.M., S11, LS 1228
- ③ 1/4 CORNER COMMON TO SECTIONS 11 & 12
 FOUND 3" ALUMINUM CAP IN ROCK MOUND. STAMPED USFS, 1981, OLS 1664
 ACCESSORIES FOUND
 1" IRON ROD - N86°05'E, 17.48 FT.
 1" IRON ROD - S85°46'W, 27.75 FT.
- ④ CORNER COMMON TO SECTIONS 11, 12, 13, 14
 FOUND 2 1/2" BRASS CAP IN SMALL ROCK MOUND. STAMPED 1975, LS 540
 BT'S FOUND
 12" PINE - S50°46'E, 24.35 FT.
 SCRIBED T145 R20E S15 BT
 30" FIR - S40°15'E, 12.64 FT.
 HEALED BLAZE
 36" PINE - S39°01'W, 25.89 FT.
 OLD SCRIBING
 36" PINE - N28°10'W, 15.19 FT.
 OLD SCRIBING
 12" FIR - N5°08'E, 10.09 FT.
 SCRIBED T145 R20E S12 BT
- ⑤ 1/4 CORNER COMMON TO SECTIONS 11 & 14
 NOTHING FOUND
 SET 2 1/2" X 30" ALUMINUM PIPE WITH 3/4" ALUMINUM CAP
 STAMPED USFS, OLS 1228, 1981
 BT'S FOUND
 20" FIR W/DIAMOND BLAZE S61°56'W 14.60 FT.
 BT'S SET
 20" FIR - S58°05'W, 20.40 FT.
 SCRIBED 1/4 S 14 BT
 10" FIR - N9°16'W, 24.25 FT.
 SCRIBED 1/4 S 11 BT
- ⑥ CORNER COMMON TO SECTIONS 10, 11, 12, 13, 14, 15
 FOUND 3 1/2" ALUMINUM CAP
 STAMPED RLS 1664, 1981
 BT'S FOUND
 36" PINE - S72°35'E, 155.300 FT.
 SCRIBED R20E S14 BT
 12" FIR - S89°14'W, 224.000 FT.
 SCRIBED T145 R20E S15 BT
 20" FIR - N82°14'W, 155.200 FT.
 HEALED BLAZE
 10" FIR - N11°15'E, 771.800 FT.
 SCRIBED T145 R20E S11 BT
- ⑦ 1/4 CORNER COMMON TO SECTIONS 10 & 11
 FOUND 3 1/2" ALUMINUM CAP - WITNESS CORNER. STAMPED RLS 1664, 1981 ((15' NORTH OF TREE CORNER))
 BT'S FOUND
 42" PINE STUMP - S85°14'W, 36.50 FT.
 SCRIBED 1/4 S BT
 44" PINE - N 76°14'W, 685.100 FT.
 SCRIBED 1/4 S BT
 8" LARKSPUR - N22°15'E, 1008.500 FT.
 SCRIBED 1/4 S BT
- ⑧ CENTER 1/4 CORNER SECTION 11
 SET 2 1/2" X 30" ALUMINUM PIPE WITH 3/4" ALUMINUM CAP. STAMPED USFS, OLS 1228, 1981
 BT'S SET
 18" FIR - N 46°57'E, 584.75 FT.
 SCRIBED 1/4 S 11 BT
 6" FIR - S 35°54'W, 99.600 FT.
 SCRIBED 1/4 S 11 BT
- ⑨ CENTER NORTH 1/4 CORNER SECTION 11
 SET 2 1/2" X 30" ALUMINUM PIPE WITH 3/4" ALUMINUM CAP. STAMPED USFS, OLS 1228, 1981
 BT'S SET
 11" FIR - S 32°20'W, 384.800 FT.
 SCRIBED CN 1/6 S 11 BT
 12" PINE - N89°11'W, 485.50 FT.
 SCRIBED CN 1/6 S 11 BT
- ⑩ 1/4 CORNER COMMON TO SECTIONS 2 & 11
 FOUND 3 1/2" ALUMINUM CAP IN MOUND. STAMPED 1975, 1981, OLS 1664
 BT'S FOUND
 12" PINE - N40°14'W, 36.50 FT.
 SCRIBED 1/4 S 12 BT
 30" PINE - N46°25'E, 485.600 FT.
 SCRIBED 1/4 S
 24" PINE - S55°35'E, 460.200 FT. HEALED BLAZE
- ⑪ NE 1/66 CORNER SECTION 11
 SET 2 1/2" X 30" ALUMINUM PIPE WITH 3/4" ALUMINUM CAP. STAMPED USFS, OLS 1228, 1981
 BT'S SET
 12" LARKSPUR - N20°27'E, 333.355 FT.
 SCRIBED NE 1/66 S 11 BT
 12" LARKSPUR - S39°14'W, 211.700 FT.
 SCRIBED NE 1/66 S 11 BT

NOTES

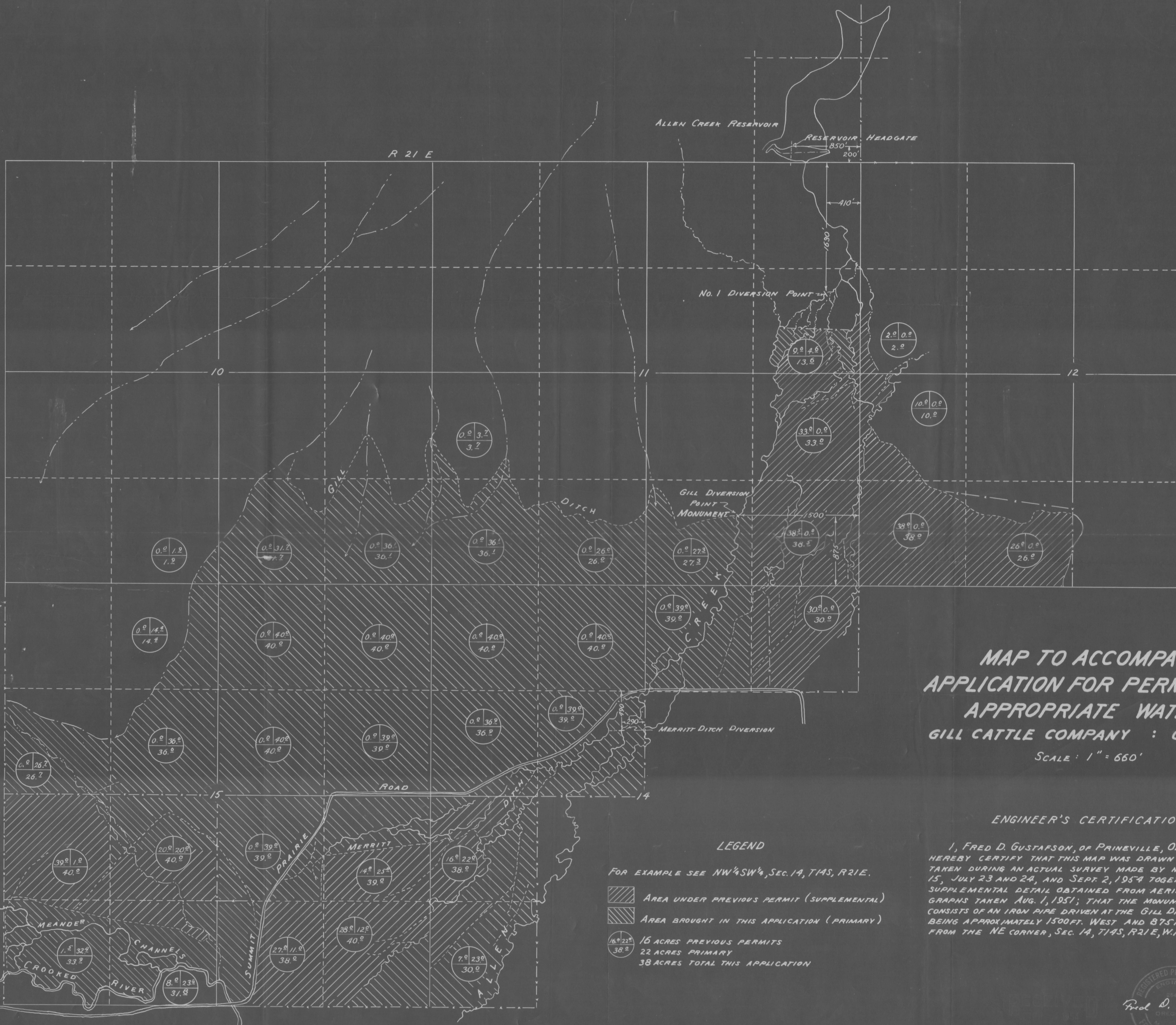
- 1) BASIS OF BEARING IS A SOLAR OBSERVATION NEAR THE NE 1/16 CORNER OF SECTION 11.
- 2) () INDICATES RECORD DATA. GLO
- 3) ALL BT DISTANCES ARE TO THE CENTER OF TREE.
- 4) ALL BT'S SET HAVE A BRASS WASHER STAMPED OLS 1228, NAILED IN LOWER BLAZE.
- 5) LLLLLL INDICATES LINES POSTED.

LEGEND

- ⊕ INDICATES CORNER FOUND
- ◇ INDICATES CORNERS SET

- 6) Original GLO Survey by W.H. Odell in October 1879.
- 7) Control for this survey was established by running a random traverse with a Topcon GTS-100 Total Station
- 8) Original field book "Evergreen Celestial" BK-1 located at Century West Engineering Bend, Or.

STATE OF OREGON,
 COUNTY OF CROOK,
 I CERTIFY that the within instrument of survey was recorded for record on the 16th day of 1981, A.D. 1981 and appeared to conform to said County.
 David L. Armstrong
 County Surveyor



**MAP TO ACCOMPANY
APPLICATION FOR PERMIT TO
APPROPRIATE WATER
GILL CATTLE COMPANY : OWNER**

SCALE : 1" = 660'

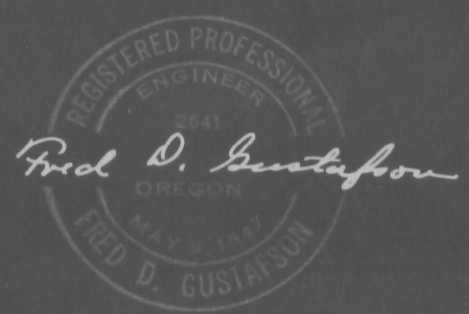
ENGINEER'S CERTIFICATION

I, FRED D. GUSTAFSON, OF PRINEVILLE, OREGON DO HEREBY CERTIFY THAT THIS MAP WAS DRAWN FROM NOTES TAKEN DURING AN ACTUAL SURVEY MADE BY ME ON JUNE 15, JULY 23 AND 24, AND SEPT. 2, 1954 TOGETHER WITH SUPPLEMENTAL DETAIL OBTAINED FROM AERIAL PHOTOGRAPHS TAKEN AUG. 1, 1951; THAT THE MONUMENT SHOWN CONSISTS OF AN IRON PIPE DRIVEN AT THE GILL DIVERSION POINT BEING APPROXIMATELY 1500 FT. WEST AND 875 FT. NORTH FROM THE NE CORNER, SEC. 14, T14S, R21E, W.M.

LEGEND

FOR EXAMPLE SEE NW¹/₄SW¹/₄, SEC. 14, T14S, R21E.

- AREA UNDER PREVIOUS PERMIT (SUPPLEMENTAL)
- AREA BROUGHT IN THIS APPLICATION (PRIMARY)
- 16 ACRES PREVIOUS PERMITS
- 22 ACRES PRIMARY
- 38 ACRES TOTAL THIS APPLICATION



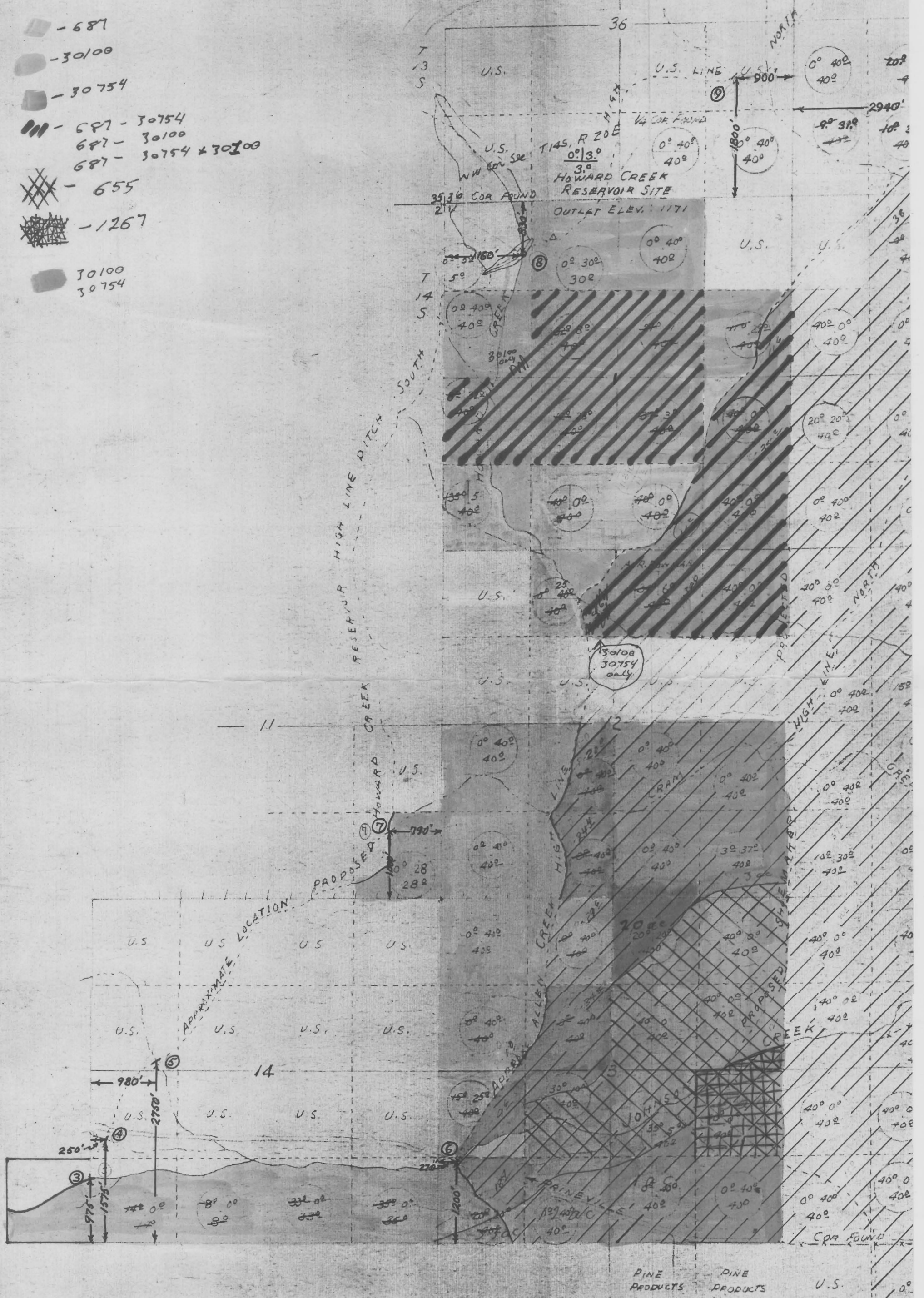
29712
R-29713
Application No. 29714
Permit No. 23391
R-1710
23392

- 687
- 30100
- 30754

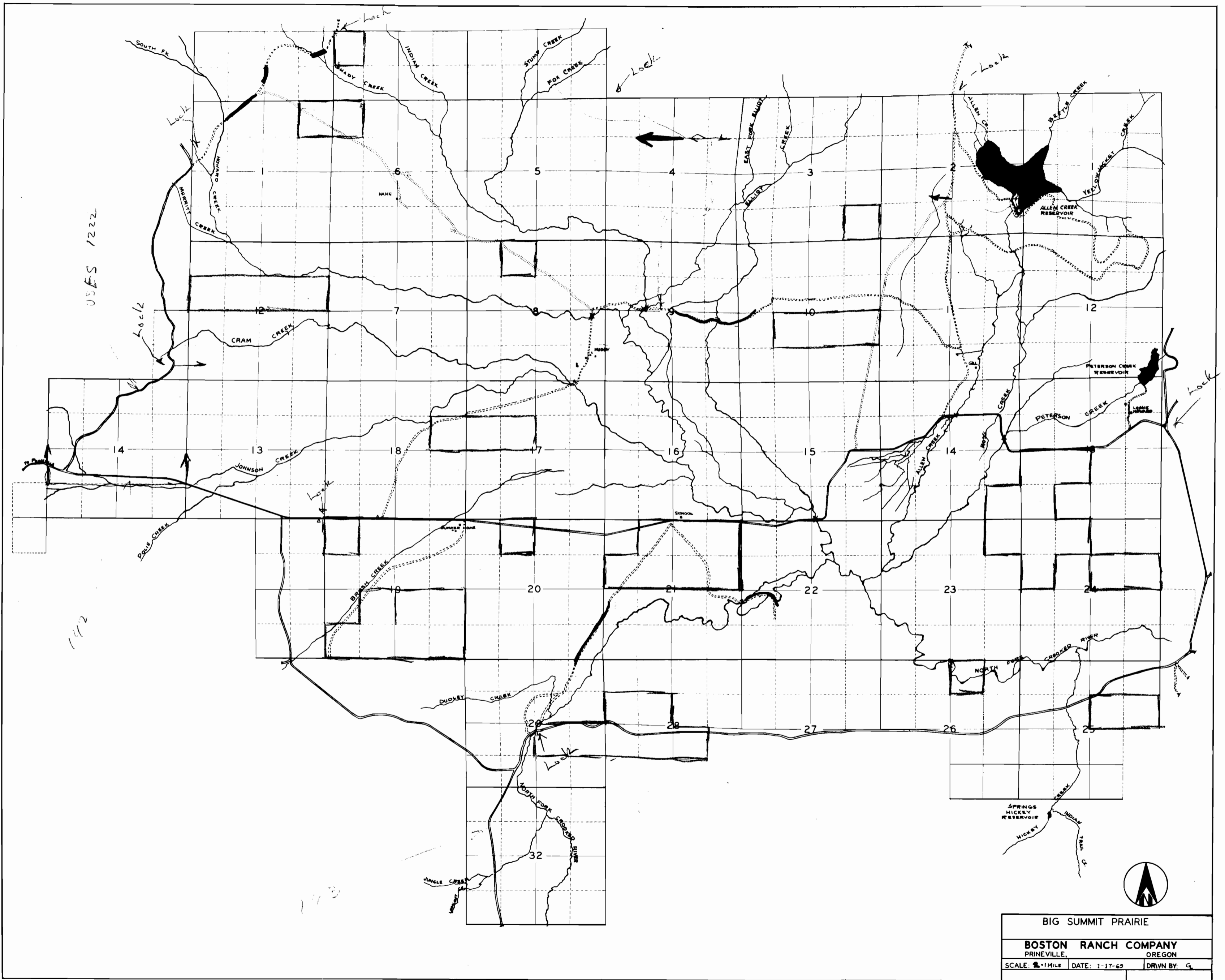
- ▨ - 687 - 30754
- ▨ - 687 - 30100
- ▨ - 687 - 30754 & 30100

- ▨ - 655
- ▨ - 1267

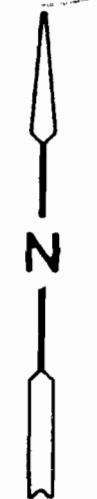
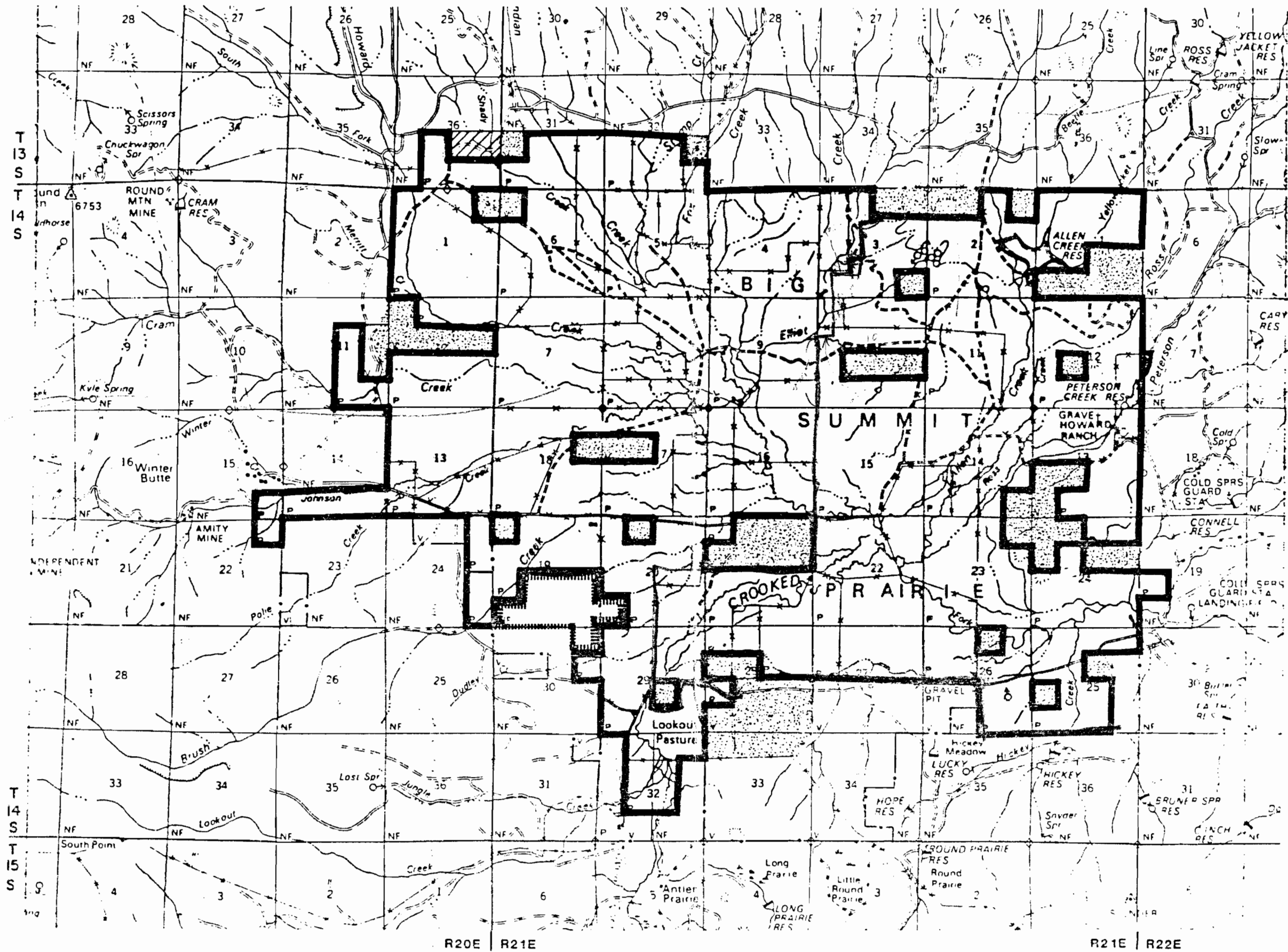
- 30100
- 30754



PINE PRODUCTS U.S.

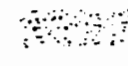
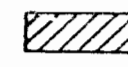





BIG SUMMIT PRAIRIE
 BOSTON RANCH COMPANY
 PRINEVILLE, OREGON
 SCALE: 1/4" = 1 MILE DATE: 1-17-69 DRAWN BY: G



1" = 1 mi.

LEGEND

-  BLM BIG SUMMIT ALLOTMENT
-  USFS SHADY PASTURE
-  USFS GAGE PASTURE
-  USFS PETERSON CREEK WATER STORAGE
-  PARCEL


23
23
22

This map is a compilation of record data and does not represent a survey of the properties shown.

DESIGNED BY	DATE 7-29-82
DRAWN BY MEL	SCALE 1" = 1 MILE
CHECKED BY	SEC
DRAWING NO 0001.776.A1	

BIG SUMMIT PRAIRE

BROOKS RESOURCES CORP.



Brooks Resources Corporation

