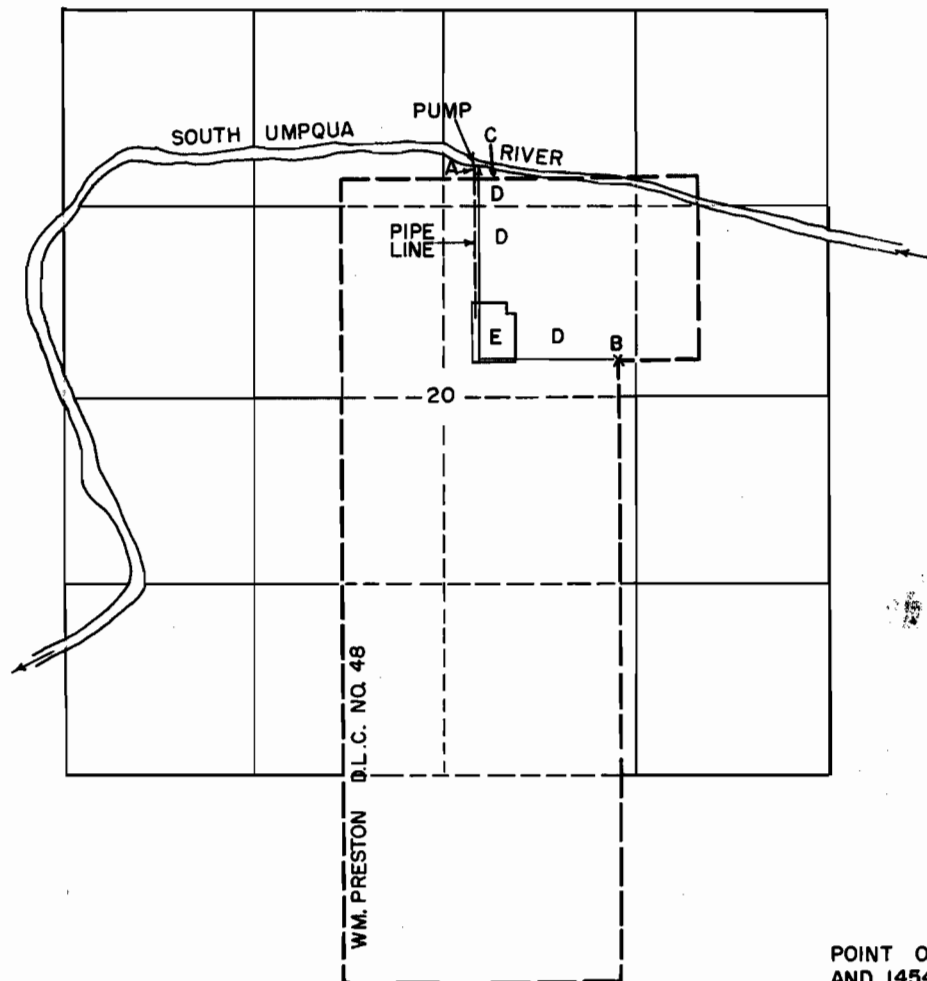
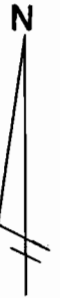


DOUGLAS FOREST PROTECTIVE ASSOCIATION
SOUTH DOUGLAS GUARD STATION

SW 1/4 NE 1/4 SEC. 20 T. 30S. R5W.W.M.



POINT OF DIVERSION (A) IS 998.8' WEST
AND 1454' NORTH OF INTERIOR CORNER (B)
OF WM. PRESTON D.L.C. NO. 48

LEGEND

- A PUMP LOCATION, POINT OF DIVERSION
- B INTERIOR CORNER, D.L.C. NO. 48
- PROPERTY OWNERSHIP
- C CHERWINK & NORTHWAY
- D TAVENNER
- E DOUGLAS FOREST PROTECTIVE ASS'N.

SCALE 4" = 1 MILE

Application No. 31464
Permit No. 24809