

RECEIVED
 APR 5 1957
 STATE ENGINEER
 SALEM, OREGON

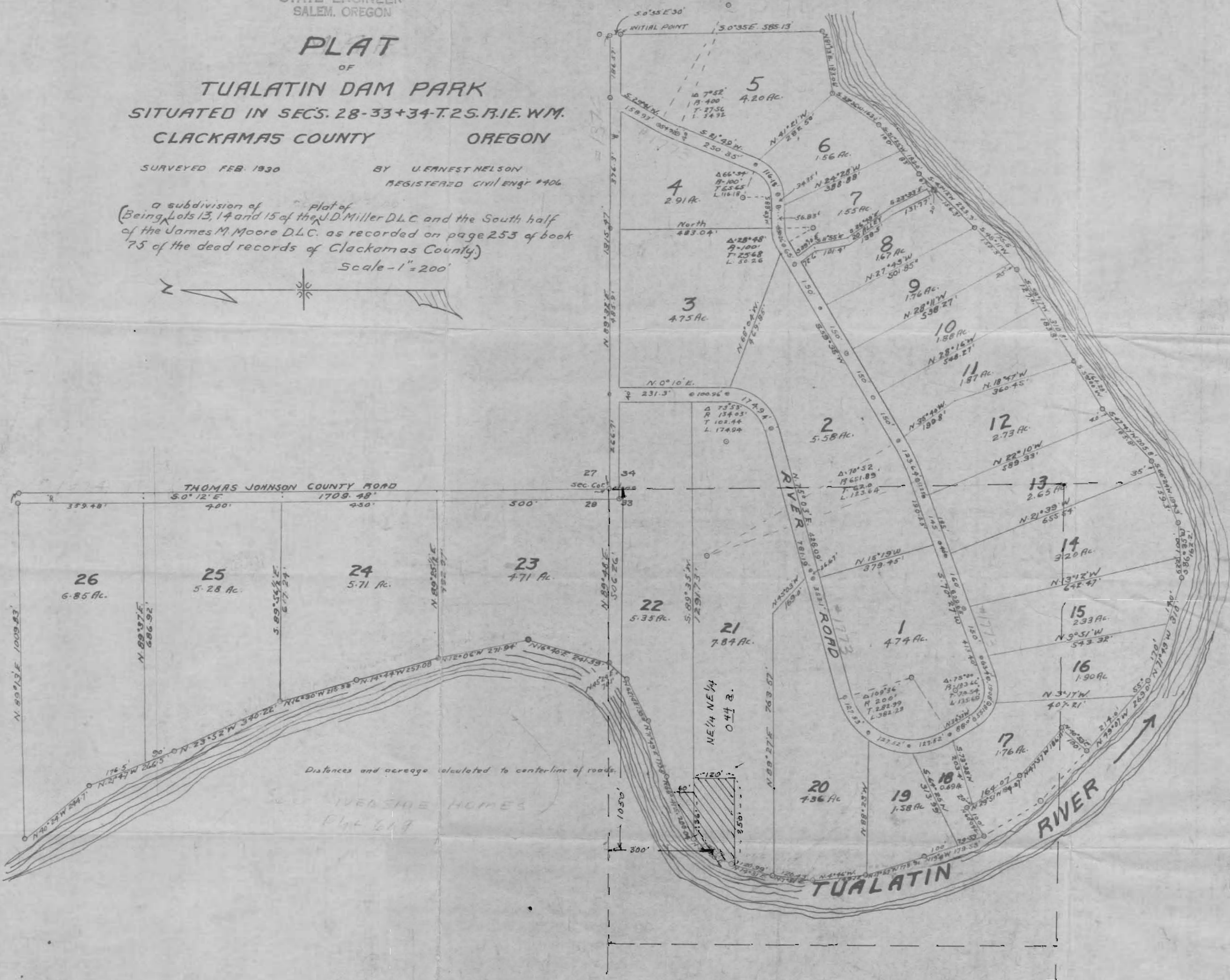
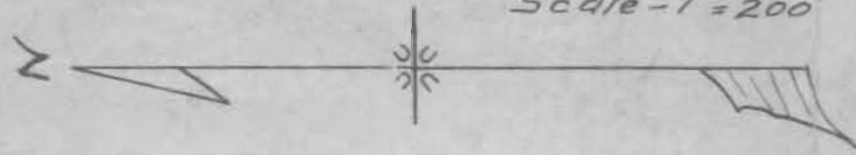
PLAT
 OF
TUALATIN DAM PARK
 SITUATED IN SECS. 28-33+34 T.2S. R.1E. WM.
 CLACKAMAS COUNTY OREGON

SURVEYED FEB. 1930

BY U. EARNEST NELSON
 REGISTERED CIVIL ENGR #406

a subdivision of a plat of
 (Being Lots 13, 14 and 15 of the J.D. Miller D.L.C. and the South half
 of the James M. Moore D.L.C. as recorded on page 253 of book
 75 of the dead records of Clackamas County)

Scale - 1" = 200'



Distances and acreage calculated to center-line of roads.

IVESIDE HOMES
 Plat 667