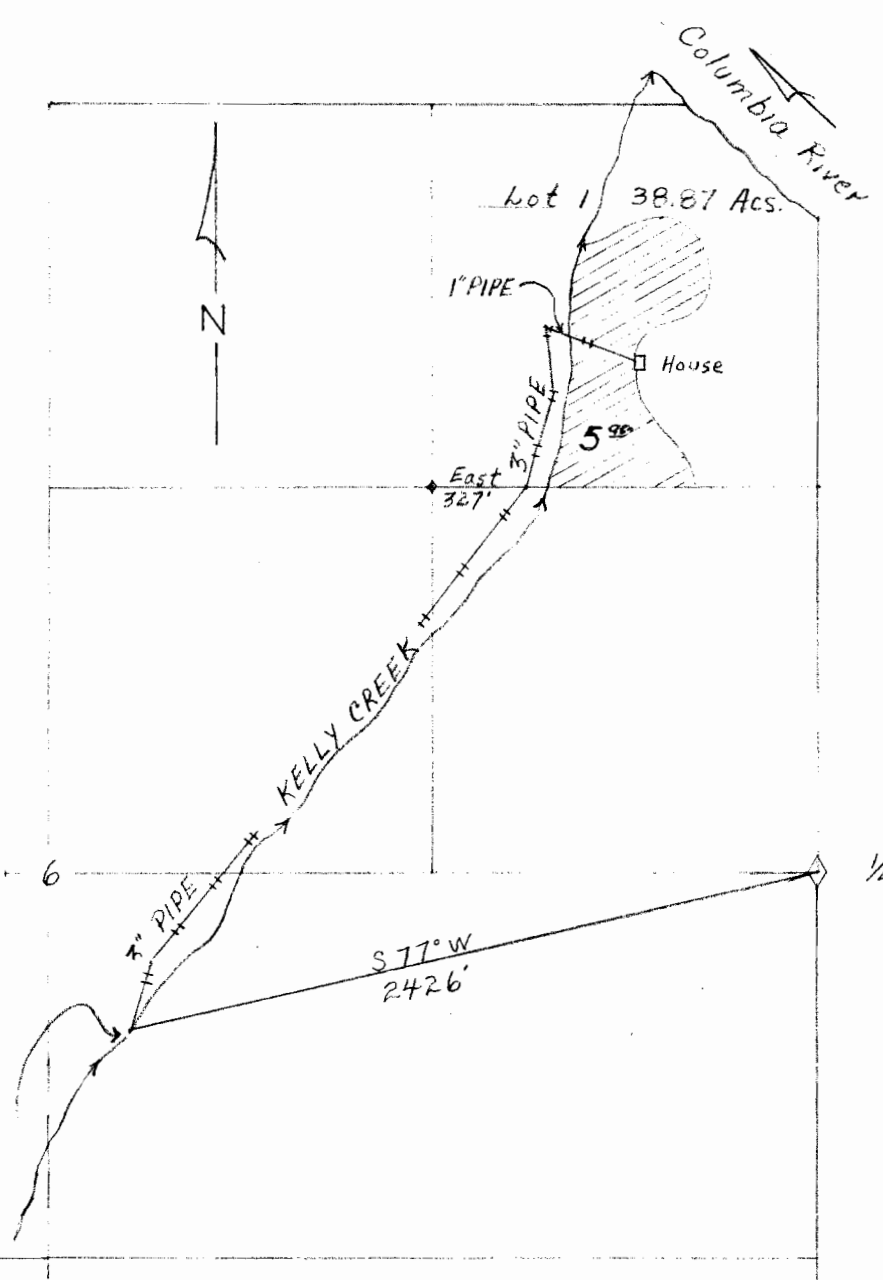


Township 8 North, Range 6 W, W.M.  
Clatsop County, Oregon

PLAT 152  
PAGE 2



Water Diversion Map  
Gravity Flow

1/4 Cor bet. Secs. 6 | 5  
Twp. 8 N, Rge 6 W, W.M.

Scale: 8" = 1 Mile

Maped by K.M. Clark  
April 13, 1957

Application No. 31488  
Permit No. 24846