

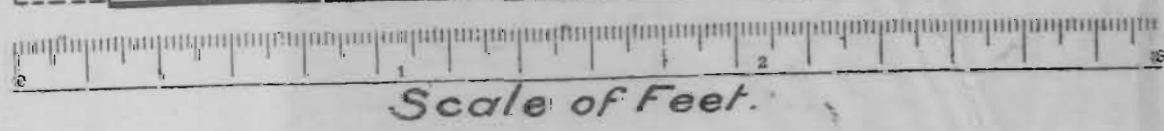
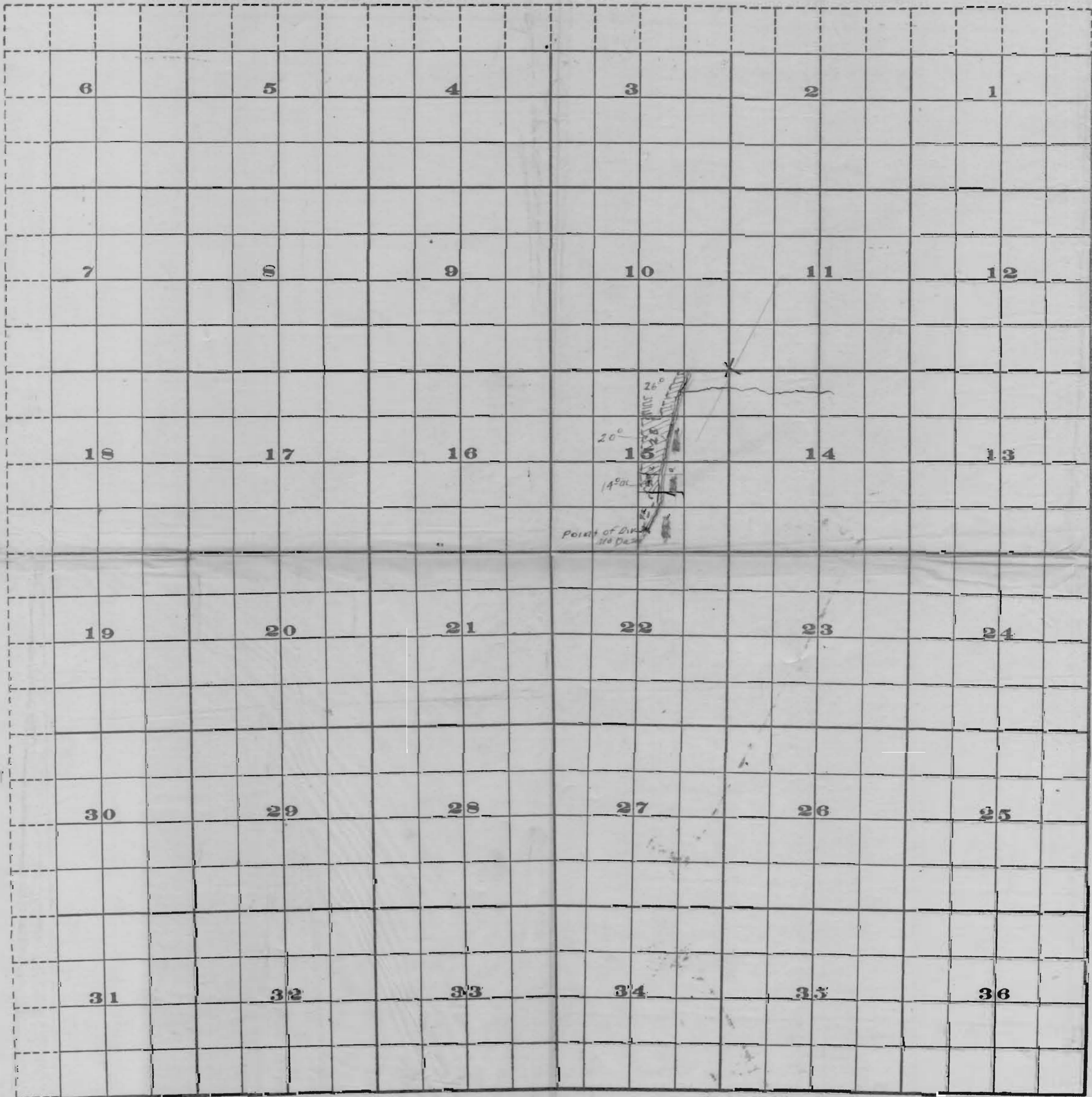
4351

Township 1N

Range 42 E.W.M.

SALEM - OREGON
JUN 14 1915
RECEIVED
OFFICE OF STATE ENGINEER

4351



FROM OFFICE OF THE STATE ENGINEER, SALEM, OREGON

4351

4351

OFFICE OF STATE ENGINEER
RECEIVED
JUN 14 1915
SALEM, OREGON,

Application No. 4321
Permit No. 2506