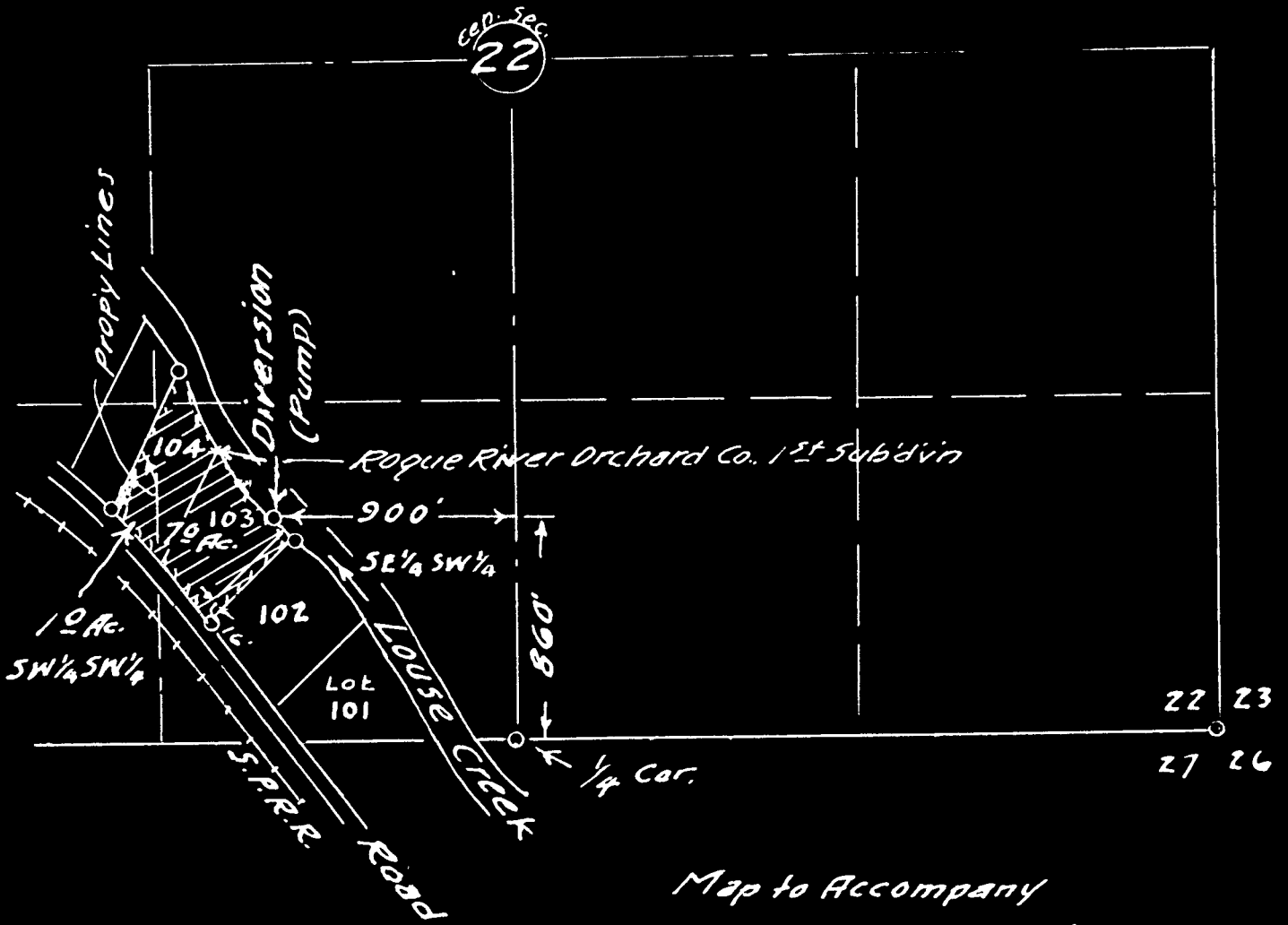


Permit: S 25151
 Volume: 5
 Strm: LOUSE CR
 Trib: JUMPOFF JOE CR
 Priority: 9/17/57

T. 35 S. R. 6 W., N.M.



Map to Accompany
 Application to Appropriate Water
 Roy W Bishop
 Drawn by Tom R Pearce, Eng'r #838
 Scale 8" = 1 mile
 Oct. 1957

31280
 25151