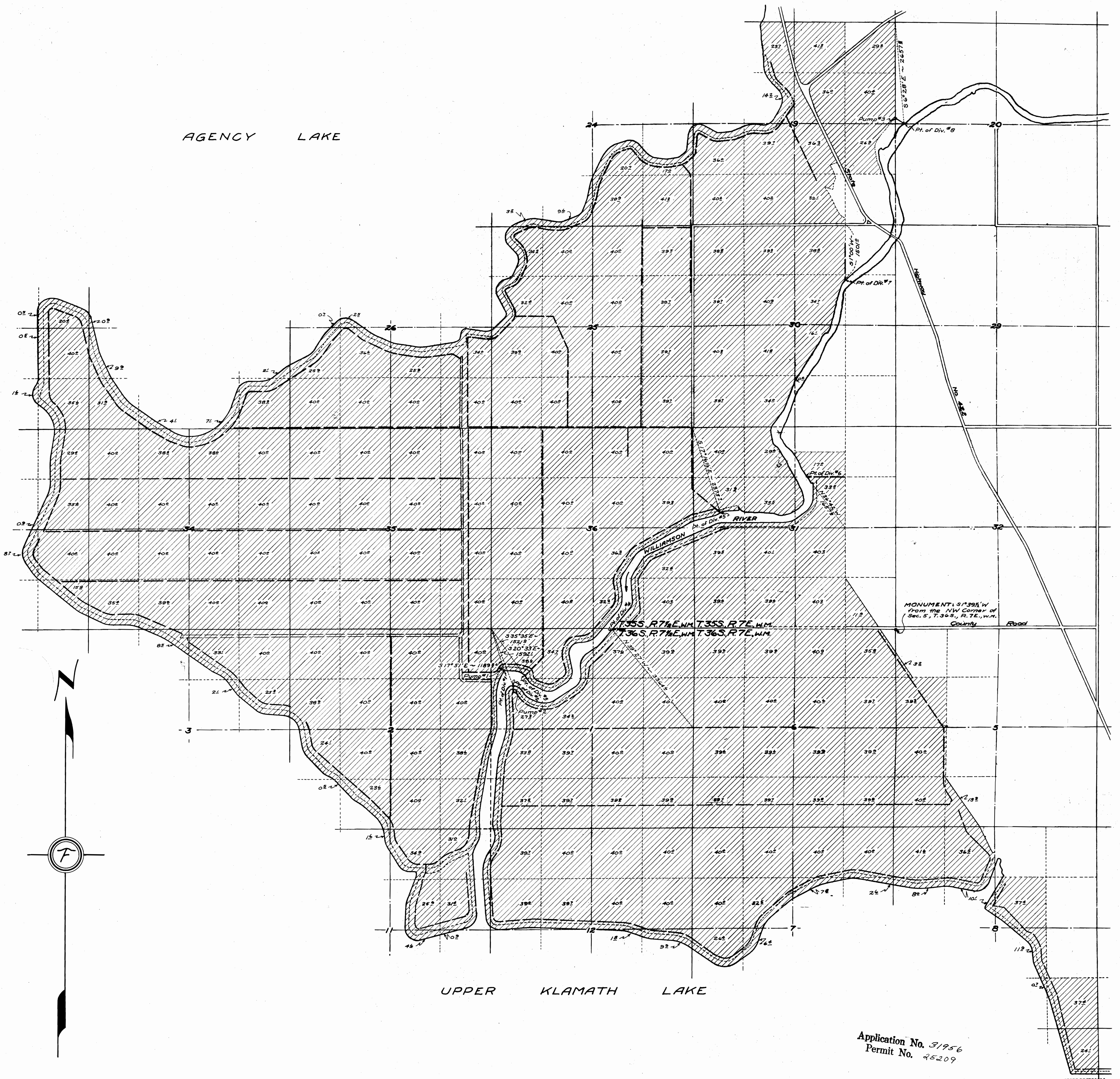


AGENCY LAKE

UPPER KLAMATH LAKE



MONUMENT: S 1° 39 1/2' W
 from the NW Corner of
 Sec. 5, T. 36 S., R. 7 E., W. 1/4
 County Road

T. 35 S., R. 7 E., W. 1/4, T. 35 S., R. 7 E., W. 1/4
 T. 36 S., R. 7 E., W. 1/4, T. 36 S., R. 7 E., W. 1/4

CERTIFICATE

I, William L. Wales, Jr., of Klamath Falls, Oregon, do hereby certify that this map was made from notes taken during an actual survey made by me or under my immediate supervision and completed on August 5, 1957, and that the monument shown on this map, consisting of a one inch iron pipe 36 inches long driven in the ground 30 inches, is S 1° 39 1/2' W - 302 feet from the stone marking the Section Corner common to Sections 31 and 32, T. 35 S., R. 7 E., W. 1/4, and Sections 5 and 6, T. 36 S., R. 7 E., W. 1/4.

William L. Wales, Jr.
 Registered Professional Engineer
 Date of Registration: May 11, 1951

Application No. 31956

LEGEND

- Levees
- Comb. Irrigation & Drainage Canals.

Application No. 31956
 Permit No. 45209



MAP SHOWING
 LANDS TO BE IRRIGATED
 BY
TULANA FARMS
 (WILLIAMSON RIVER RANCH)
 KLAMATH COUNTY, OREGON
 SCALE: 1 IN. = 1000 FT.

Survey & Map By: William L. Wales, Jr.
 Civil & Structural Engineer
 Klamath Falls, Oregon.