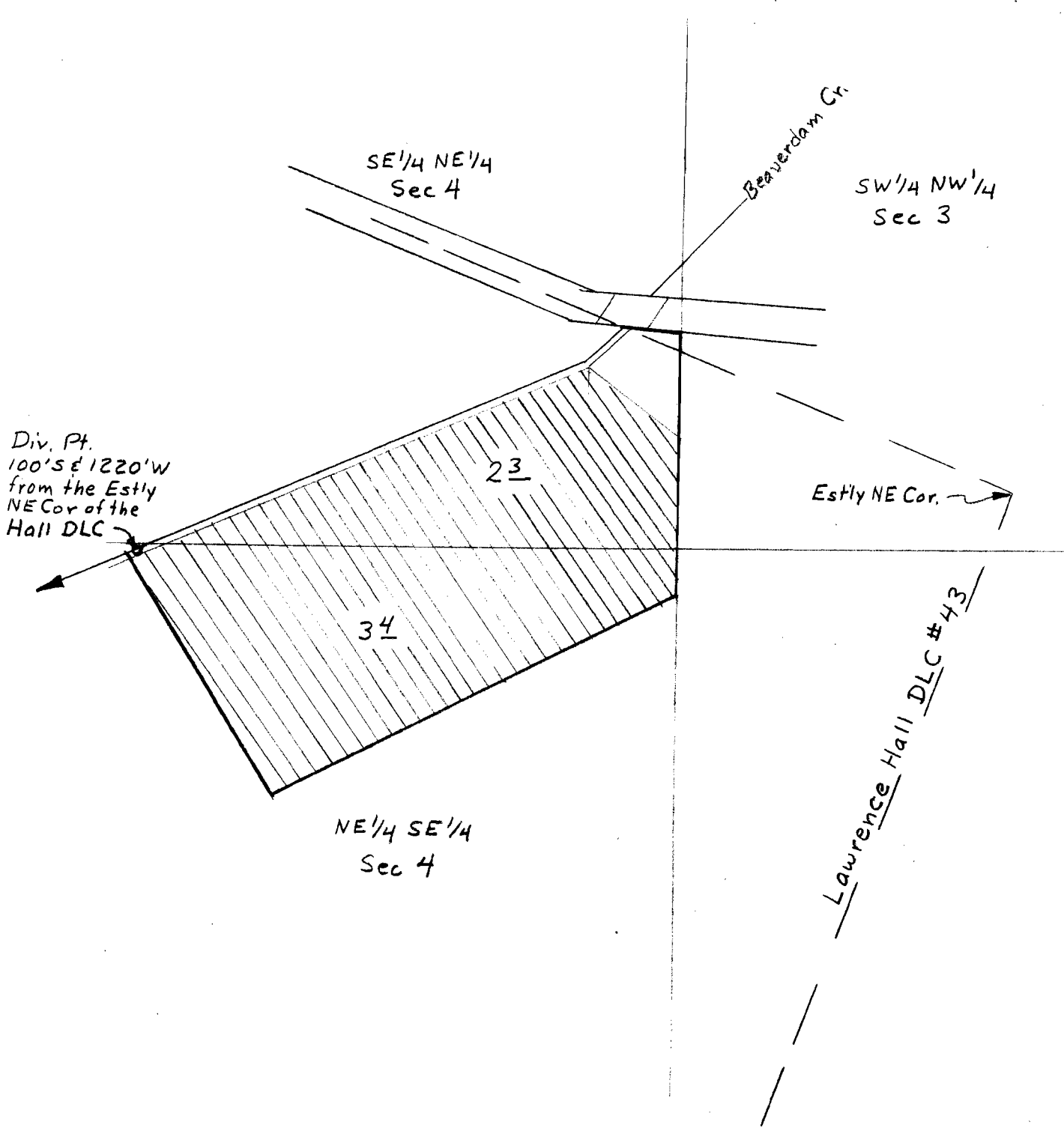


TIS, RIW WM



Div. Pt.
100° S 8' 12.20' W
from the Estly
NE Cor of the
Hall DLC

SE 1/4 NE 1/4
Sec 4

SW 1/4 NW 1/4
Sec 3

Beaverdam Cr.

23

Estly NE Cor.

34

Lawrence Hall DLC #43

NE 1/4 SE 1/4
Sec 4

SCALE 1 IN = 200 FT

Application No. 32056
Permit No. 25316