

JACK BAILEY

SEC. 8, T. 10 S., R. 1 W., W.M.

LINN CO., ORE.

Scale: 1" = 200' May 8, 1958

ORRIS A. CARNEGIE
DEP. CO. SURVEYOR

NW Cor. of NE 1/4 of Sec. 8;
Fol. Stone 6"x6"x12" "cs"
Fir 10" S. 42 1/2° W. 16 lks
Fir 10" N. 88° W. 31 lks.

RECEIVED
JUN 5 1958

STATE ENGINEER
SALEM, OREGON

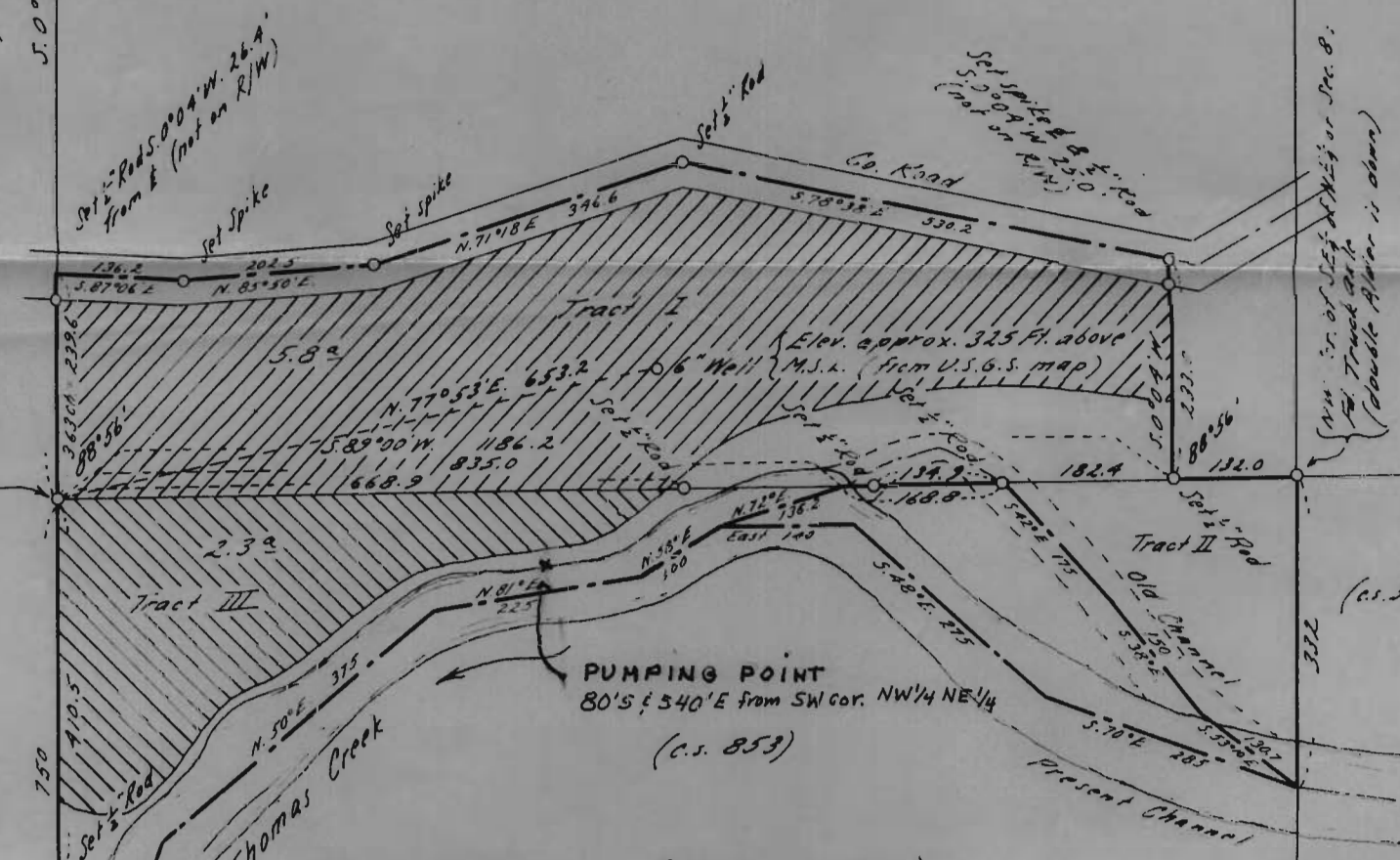
True bearings - from solar observation

OFFICE OF
LAND SURVEYOR
Orris A. Carnegie
ORRIS A. CARNEGIE
217

SW Cor. of NW 1/4 of NE 1/4 of Sec. 8;
Fol. Stone 6"x6"x12" mtd. "cs" on E. face;
Stone is on E. side of fence post.

S. 0° 04' W. 1321.5

NW 1/4 of NE 1/4 of Sec. 8;
Fol. Stone on E. side of fence post.
(Double Alvin is down)



- Tract I = 7.50^a (0.02^a in river)
- Tract II = 1.28^a (0.03^a in present river)
- Tract III = 3.67^a (1.00^a in present river)

The area between the 1/2 of the old channel and the 1/2 of the present channel & South of the South line of the NW 1/4 of the NE 1/4 of Sec. 8 = 1.16^a of which 0.48^a lies in the present river. It would appear that this area is probably alluvial land since it is made up of silt, sand and gravel and is covered by willow and a few small balm trees not more than about 5" in dia.

Printed 8/1/58 5-15-58...

Application No. 32368
Permit No. 25561