

2 W

1/4 corner

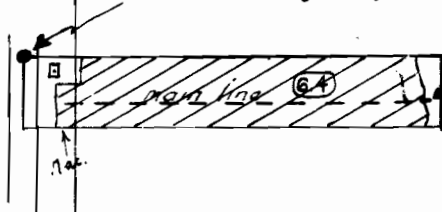
3 S

SW 1/4 of SE 1/4

SE corner Richard Everest D.L.C.

150'S + 1360'E

pump site



Anton Blom
Star Route
Box 23
Newberg, Oregon

1/4 corner

20 21
29 28

Scale 1" = 330'
660'

Application No. 32588
Permit No. 25719