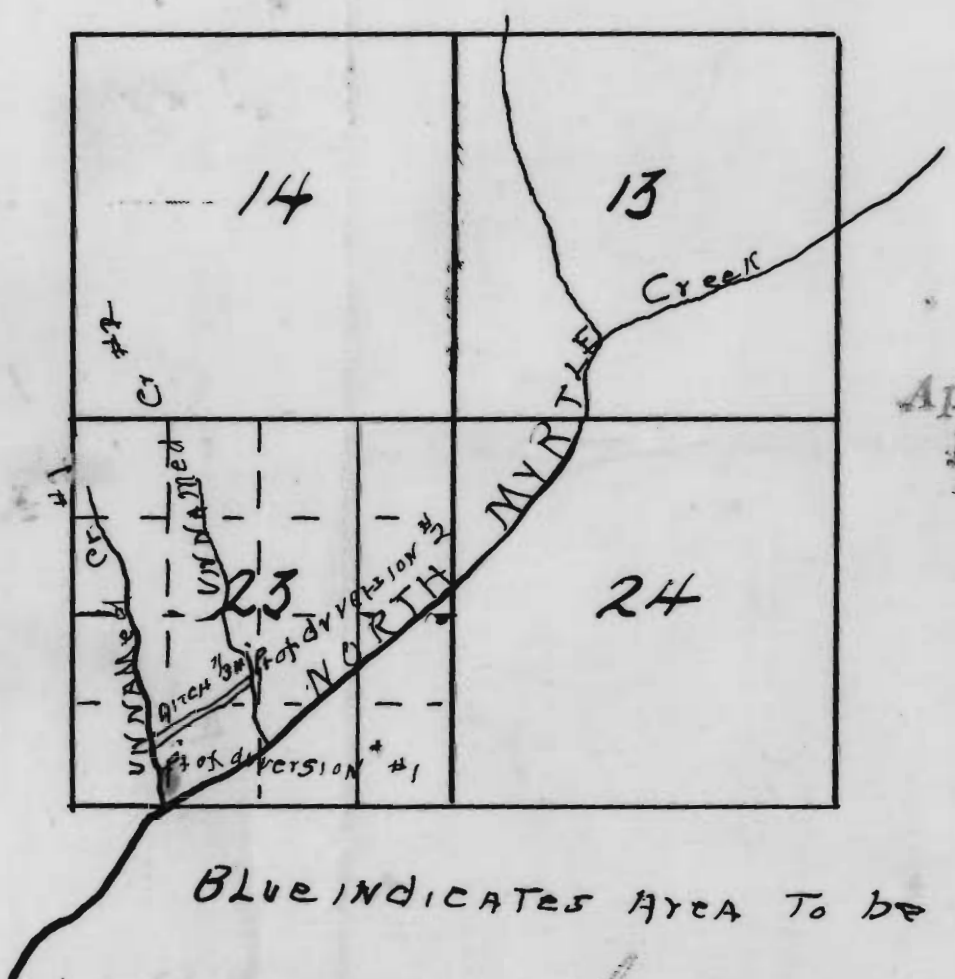


7  
3  
7  
7  
5  
TP 28S R4 W. WM.

OFFICE OF STATE ENGINEER  
RECEIVED  
JUN 24 1915  
SALEM, OREGON

MAP FOR  
APPLICATION OF  
WM. STEUER



Application No. 4342  
Permit No. 2578

BLUE INDICATES AREA TO BE IRRIGATED - 3A.

green is land to be irrigated