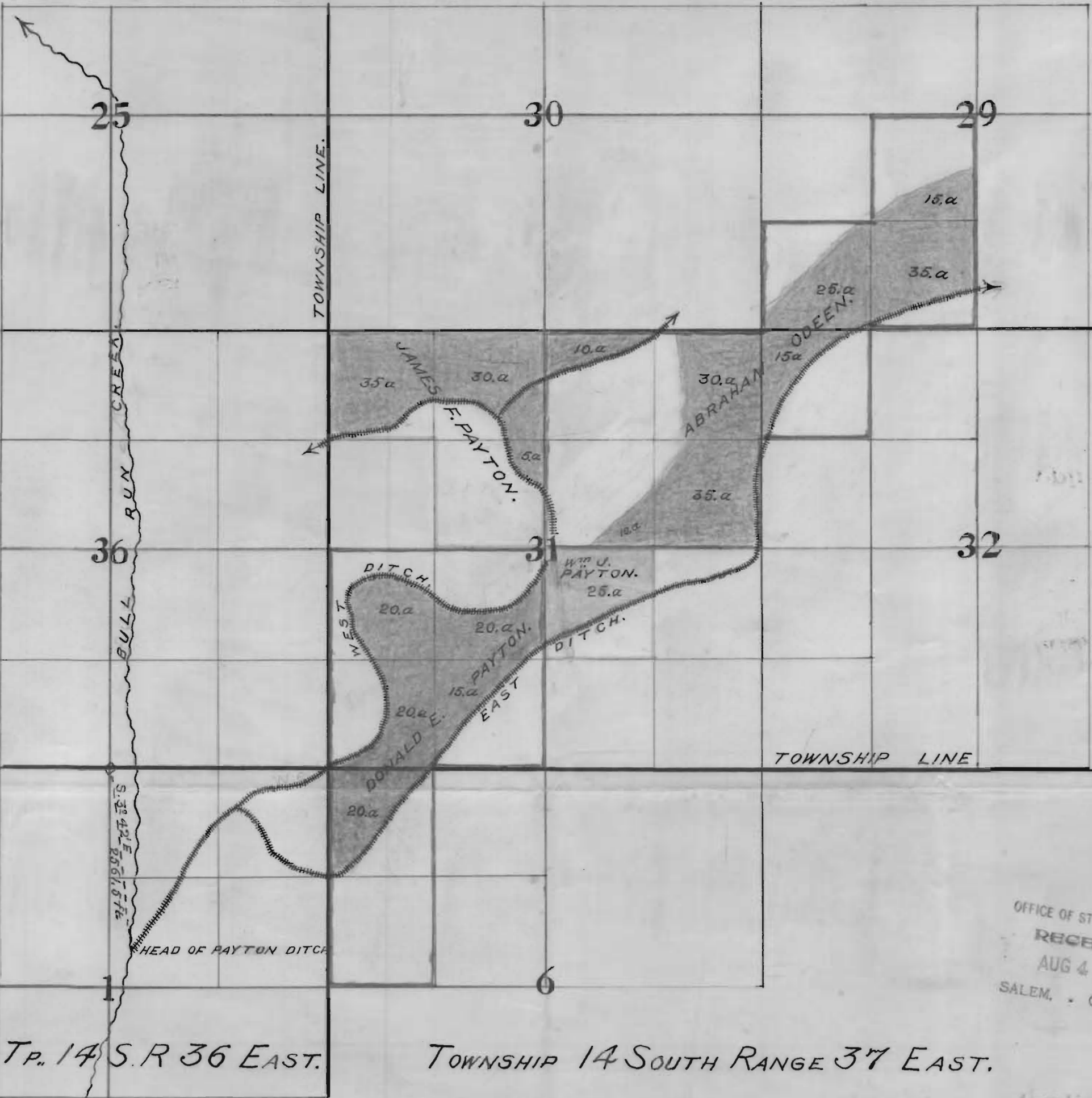


Tr. 13 S R 36 E.

TOWNSHIP 13 SOUTH RANGE 37 EAST.



Tr. 14 S. R 36 EAST.

TOWNSHIP 14 SOUTH RANGE 37 EAST.

OFFICE OF STATE ENGINEER  
 RECEIVED  
 AUG 4 1915  
 SALEM, OREGON,

Application No. 4443  
 Permit No. 2579

CERTIFICATE OF SURVEYOR.

I, C.M. Foster of Baker Oregon, do hereby certify that this map was made from a map represented as being made from notes taken during an actual survey by W.F. Rankin in September 1914 and from information furnished me by applicants; and that it correctly represents the works described in the accompanying application and has written thereon the area in each smallest legal subdivision which it is proposed to irrigate.

C.M. Foster  
 Surveyor.

4443  
 OFFICE OF STATE ENGINEER  
 RECEIVED  
 AUG 4 1915  
 SALEM, OREGON,